



Millacres, Ware SG12 9PU

Guide price £239,995



1



1

Taylor Phelps

Estate Agency

Taylor Phelps

Estate Agency

No parking in this area

PRIVATE PARKING

Taylor Phelps are delighted to offer this highly individual penthouse apartment positioned within this well regarded town centre development close to Ware train station which serves both Hertford East and London Liverpool Street! This particular apartment further benefits from an Extended Lease and two allocated parking spaces which are accessed via security gates.





Taylor Phelps
Estate Agency



Taylor Phelps
Estate Agency



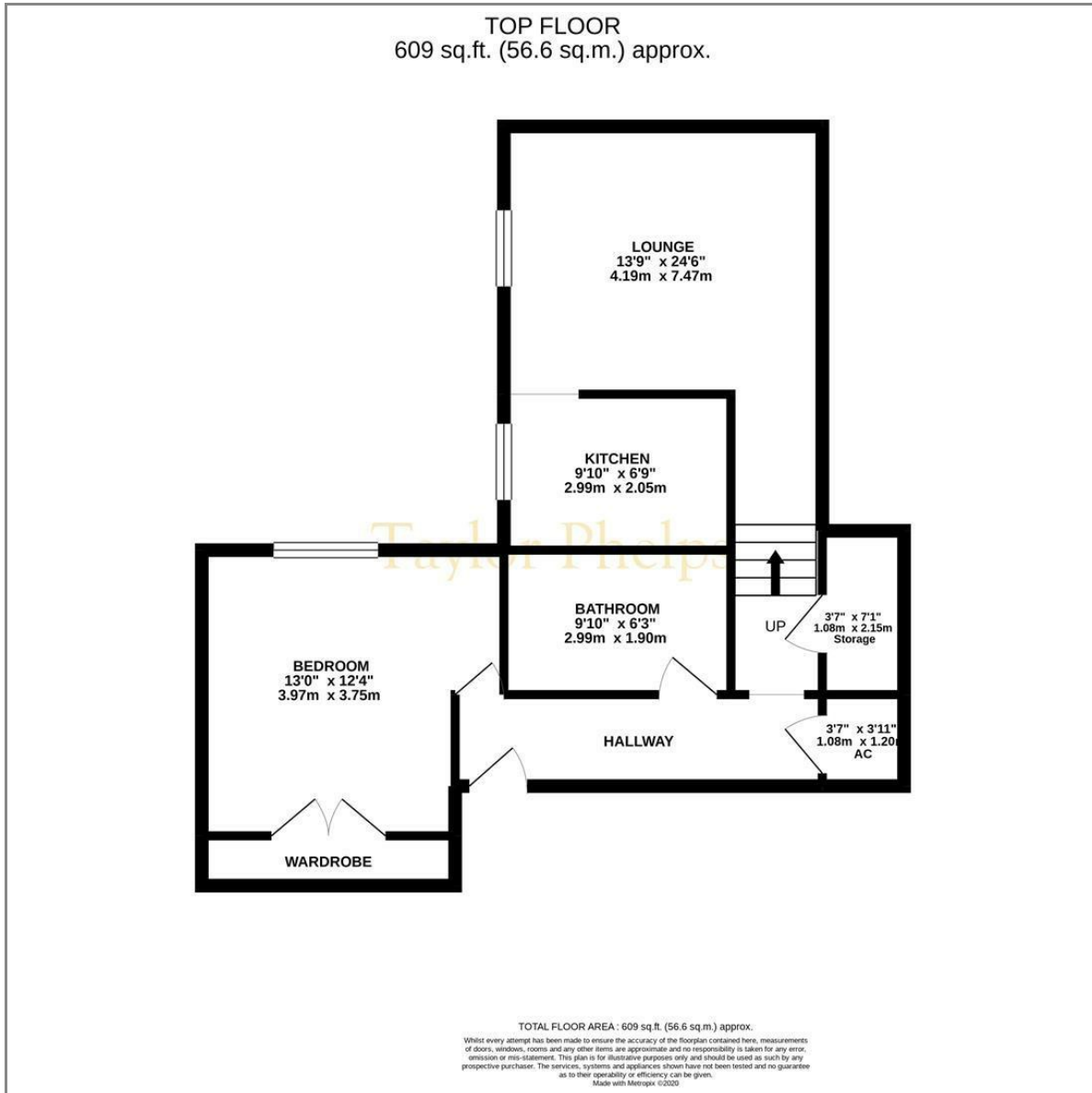
Taylor Phelps
Estate Agency



Taylor Phelps
Estate Agency



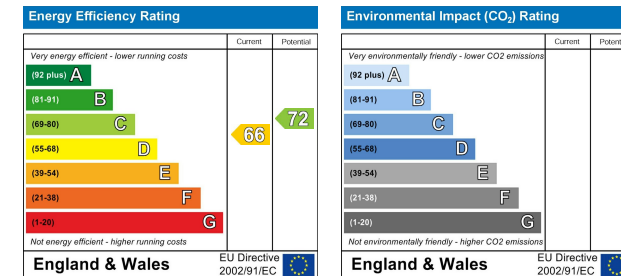
Floor Plan



Area Map



Energy Efficiency Graph



These particulars, whilst believed to be accurate are set out as a general outline only for guidance and do not constitute any part of an offer or contract. Intending purchasers should not rely on them as statements of representation of fact, but must satisfy themselves by inspection or otherwise as to their accuracy. No person in this firm's employment has the authority to make or give any representation or warranty in respect of the property.