



Taylor Phelps

Church Street, Buntingford SG9 9AS
Guide price £379,995



2

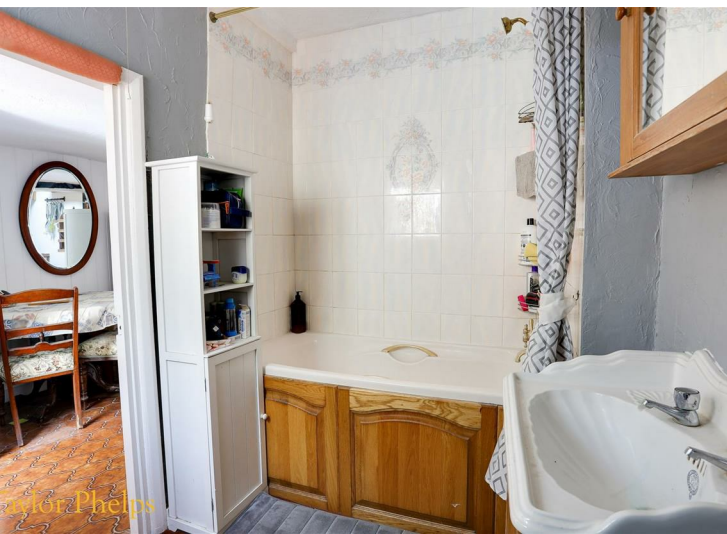


1

Taylor Phelps

Estate Agency

Boasting a wealth of character features throughout is this rarely available two bedroom Grade II listed cottage positioned within the ever popular and extremely sought after village of Buntingford close to the high street which itself, offers a number of modern day conveniences. Available Chain Free!





Taylor Phelps



Taylor Phelps



Taylor Phelps



Taylor Phelps

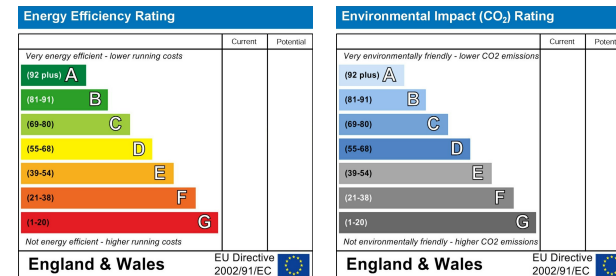
Floor Plan



Area Map



Energy Efficiency Graph



These particulars, whilst believed to be accurate are set out as a general outline only for guidance and do not constitute any part of an offer or contract. Intending purchasers should not rely on them as statements of representation of fact, but must satisfy themselves by inspection or otherwise as to their accuracy. No person in this firm's employment has the authority to make or give any representation or warranty in respect of the property.

01920 459000

hello@taylorphelps.co.uk

5 Frenchs Yard, Amwell End, Ware, Hertfordshire, SG12 9HP

www.taylorphelps.co.uk

