



Fusion Court, Ware SG12 9EJ

Guide price £299,995



Taylor Phelps

Estate Agency

Estate Agency

Taylor Phelps are pleased to offer this spacious two bedroom apartment situated in a private gated riverside development just minutes' walk from Ware's mainline station and High Street amenities. The apartment offers a good size living area with Juliette balcony and is complimented by two large double bedrooms, en suite and luxury bathroom. The property forms part of a sought-after development with direct access onto the River Lea tow path, it also benefits from residents parking.





Taylor Phelps
Estate Agency



Taylor Phelps
Estate Agency



Taylor Phelps
Estate Agency



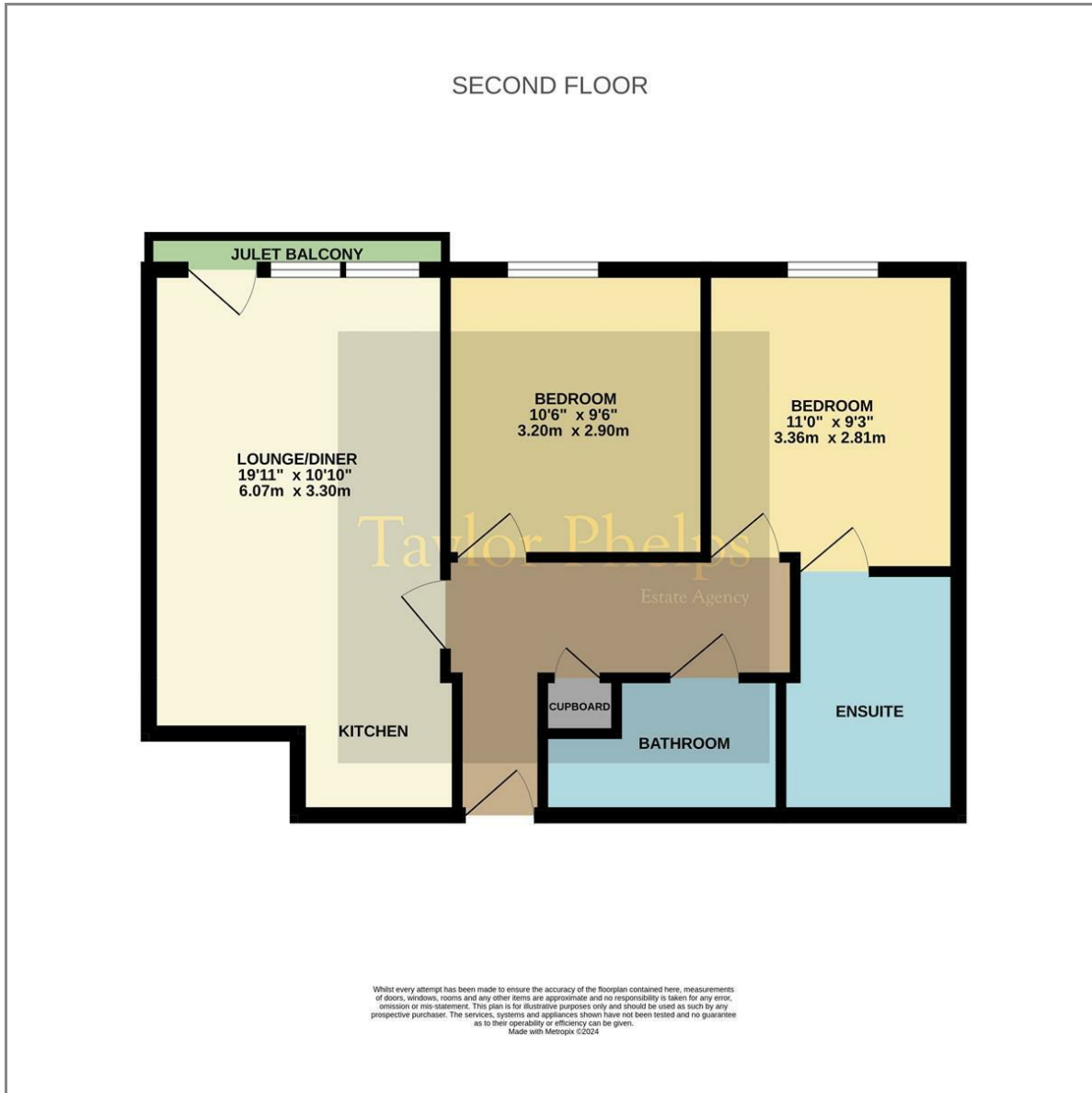
Taylor Phelps
Estate Agency





Taylor Phelps

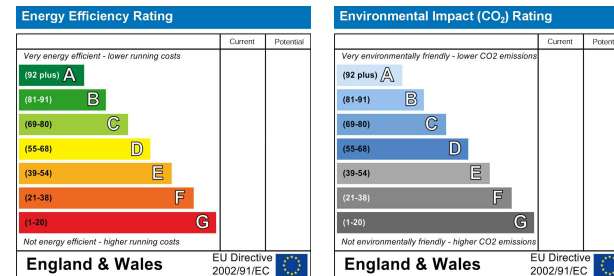
Floor Plan



Area Map



Energy Efficiency Graph



These particulars, whilst believed to be accurate are set out as a general outline only for guidance and do not constitute any part of an offer or contract. Intending purchasers should not rely on them as statements of representation of fact, but must satisfy themselves by inspection or otherwise as to their accuracy. No person in this firm's employment has the authority to make or give any representation or warranty in respect of the property.