



Spruce Court, Cowper Close, Ware SG12 0GN
£134,000 Representing a 40% share of the total value



2



1

Taylor Phelps

Estate Agency

Estate Agency

Representing a 40% share of the total value, Taylor Phelps are pleased to offer this superb two double bedroom apartment positioned within this modern, recently built development in Ware! This fantastic first floor apartment benefits from bright and spacious accommodation throughout, a modern kitchen and bathroom, a long lease and residents parking!





Taylor Phelps
Estate Agency



Taylor Phelps
Estate Agency



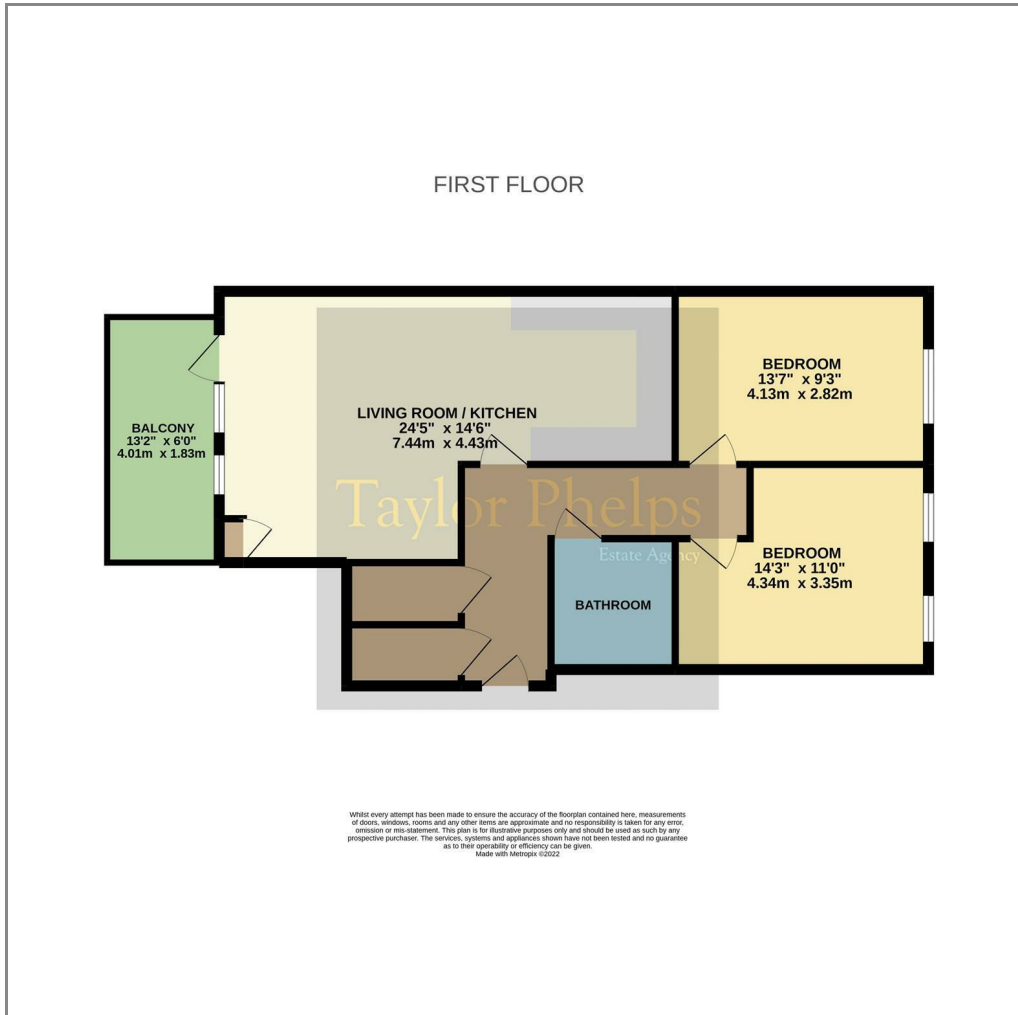
Taylor Phelps
Estate Agency



Taylor Phelps
Estate Agency



Floor Plan



Associated Information

Lease 125 from November 2018

Total Value £335,000

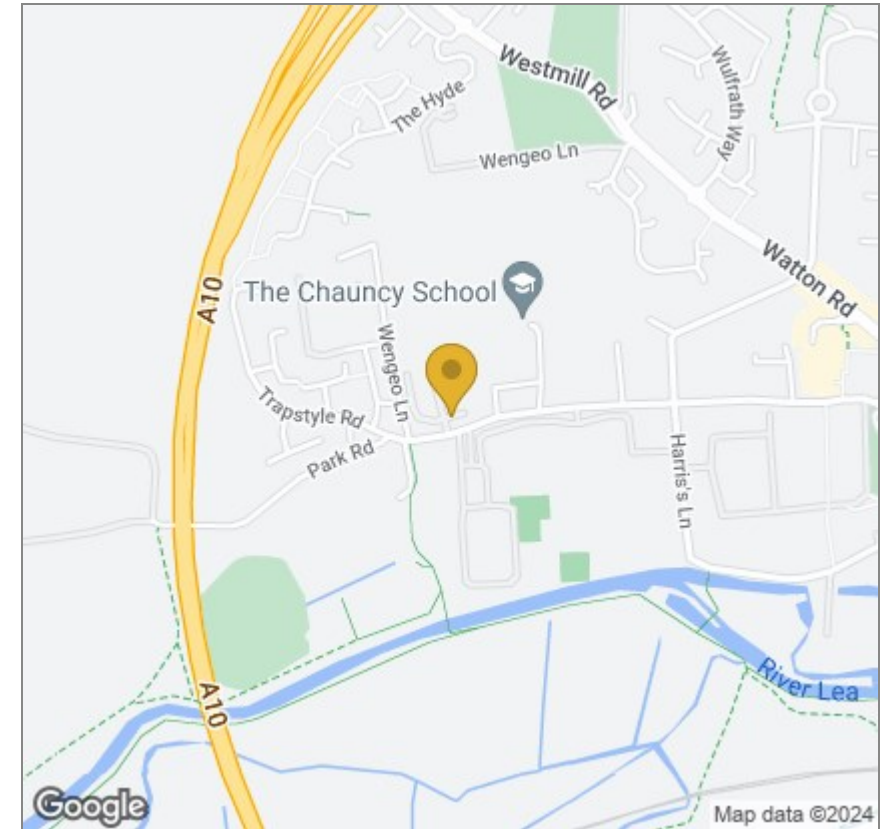
40% share available to purchase £134,000

60% rent £505 per month

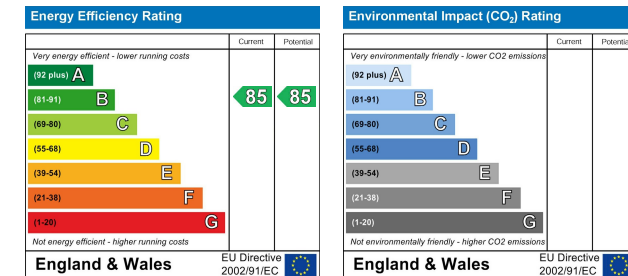
Service Charge £123 per month

These particulars, whilst believed to be accurate are set out as a general outline only for guidance and do not constitute any part of an offer or contract. Intending purchasers should not rely on them as statements of representation of fact, but must satisfy themselves by inspection or otherwise as to their accuracy. No person in this firm's employment has the authority to make or give any representation or warranty in respect of the property.

Area Map



Energy Efficiency Graph



01920 459000

hello@taylorphelps.co.uk

5 Frenchs Yard, Amwell End, Ware, Hertfordshire, SG12 9HP

www.taylorphelps.co.uk

