



Broadmeads, Ware SG12 9HT

£1,300



2



1

Taylor Phelps

Estate Agency

Taylor Phelps

Taylor Phelps are pleased to offer this spacious two double bedroom upper floor apartment positioned within this gated development close to Ware high street and station which serves both Hertford East and London Liverpool Street. This property further benefits from a boasts bright and open living space, high spec refitted kitchen and gated residents parking. Available Early January 2024





Taylor Phelps



Taylor Phelps



Taylor Phelps



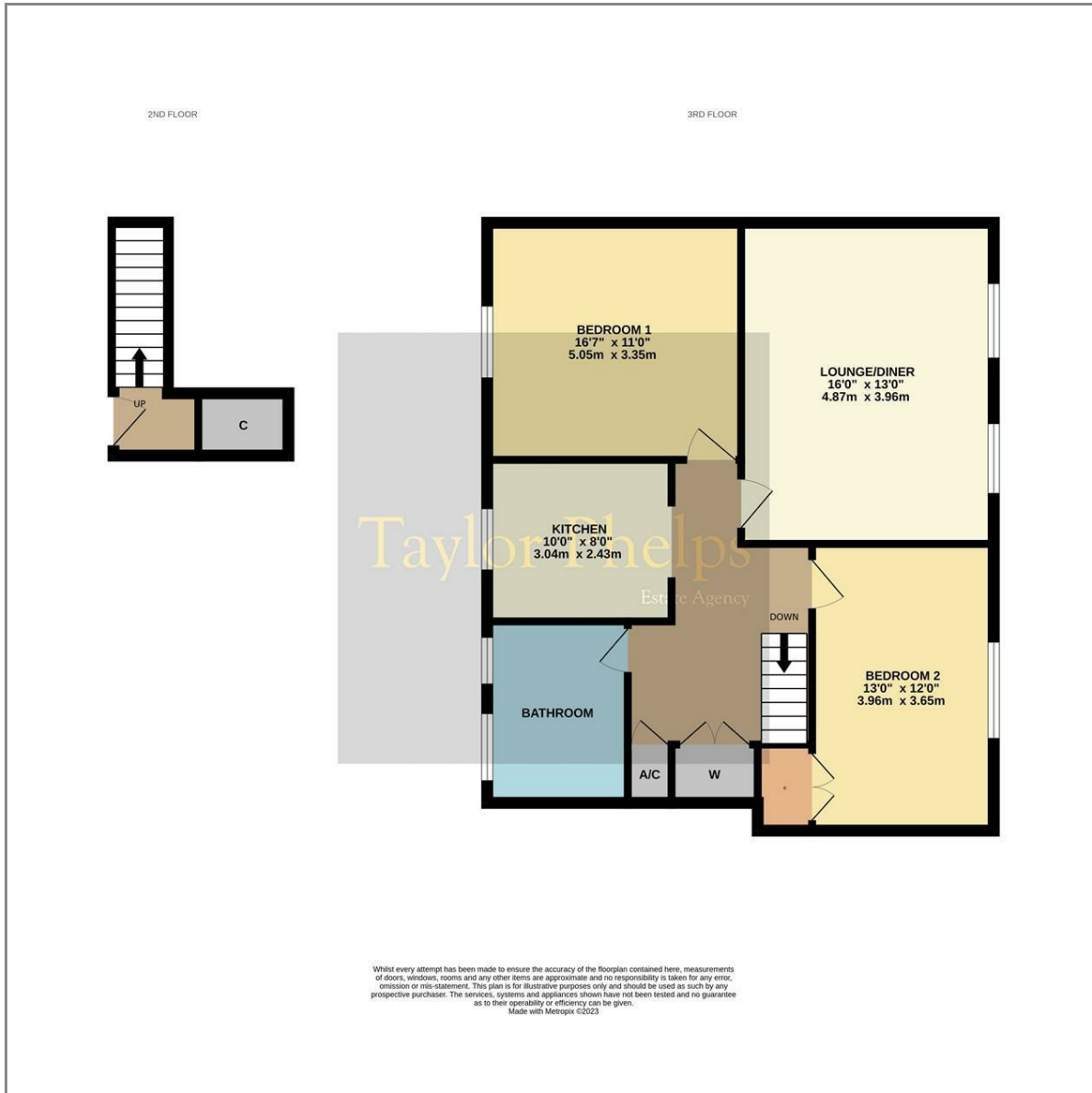
Taylor Phelps



Permit Holders Only
See notices in car park for terms and conditions and date valid.

Taylor Phelps

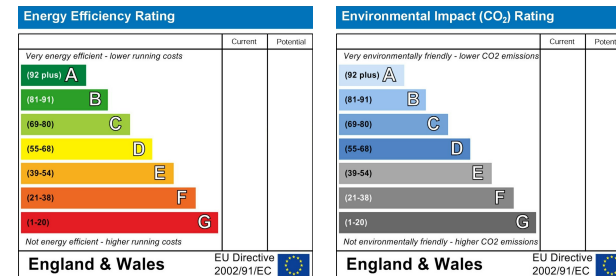
Floor Plan



Area Map



Energy Efficiency Graph



These particulars, whilst believed to be accurate are set out as a general outline only for guidance and do not constitute any part of an offer or contract. Intending purchasers should not rely on them as statements of representation of fact, but must satisfy themselves by inspection or otherwise as to their accuracy. No person in this firm's employment has the authority to make or give any representation or warranty in respect of the property.