



Chadwell House, Amwell End, Ware SG12 9JE

£1,750



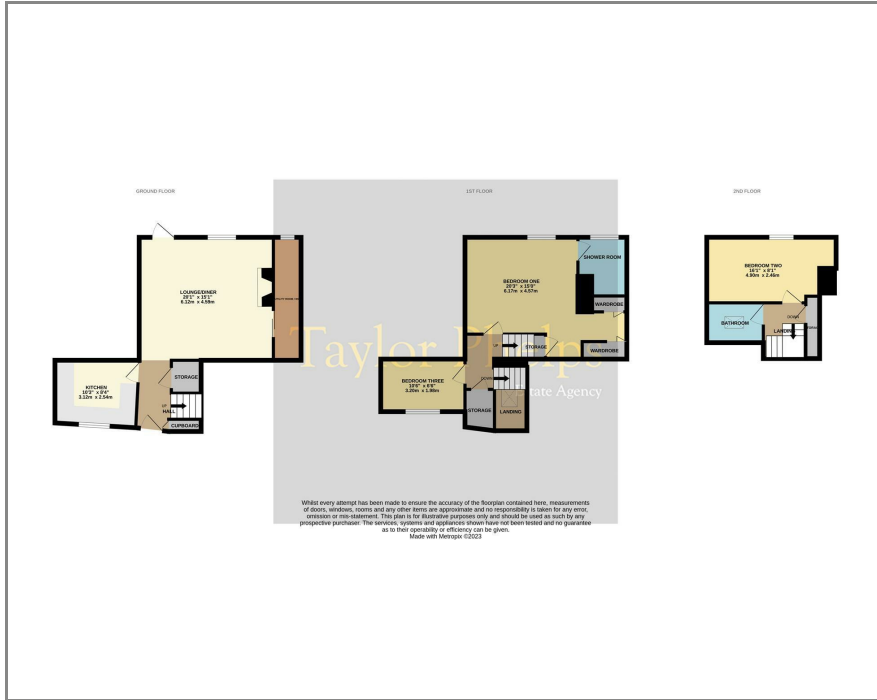
Taylor Phelps

Estate Agency

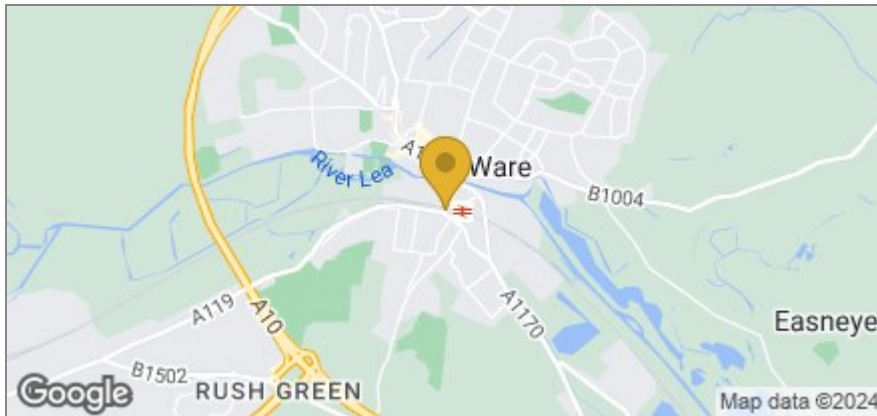
Taylor Phelps



## Floor Plan



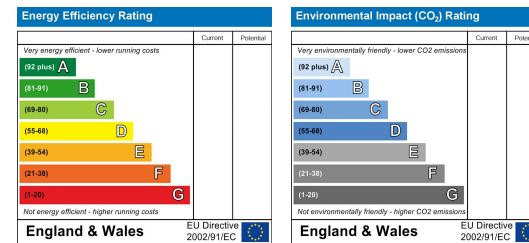
## Area Map



Taylor Phelps are pleased to offer this individual three bedroom house positioned close to Ware high street and train station which serves both Hertford East and London Liverpool Street. This spacious property is set over three levels and offers versatile accommodation throughout with two bathrooms. Externally there is allocated parking to the rear of the property. Available Part Furnished.



## Energy Efficiency Graph



These particulars, whilst believed to be accurate are set out as a general outline only for guidance and do not constitute any part of an offer or contract. Intending purchasers should not rely on them as statements of representation of fact, but must satisfy themselves by inspection or otherwise as to their accuracy. No person in this firm's employment has the authority to make or give any representation or warranty in respect of the property.

01920 459000

hello@taylorphelps.co.uk

5 Frenchs Yard, Amwell End, Ware, Hertfordshire, SG12 9HP

www.taylorphelps.co.uk

