



Milton Road, Ware SG12 0PZ

Guide price



2



1

Taylor Phelps

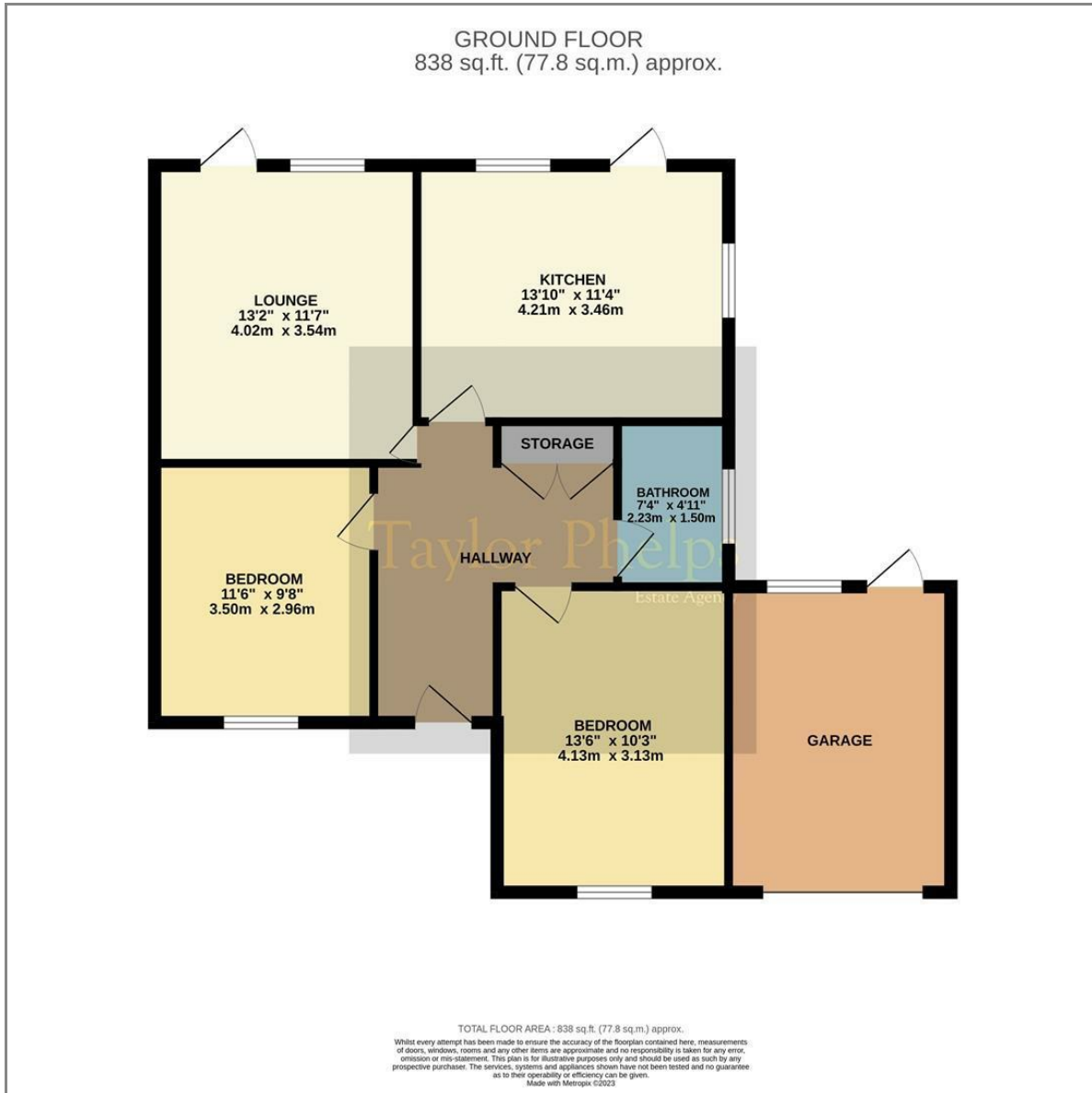
Estate Agency

Taylor Phelps are pleased to offer this rarely available semi detached bungalow with garage and driveway in Milton Road in Ware. Milton Road itself is positioned not far from Ware High Street which affords many local amenities and Ware Station which serves both Hertford East and London Liverpool Street. Available Chain Free





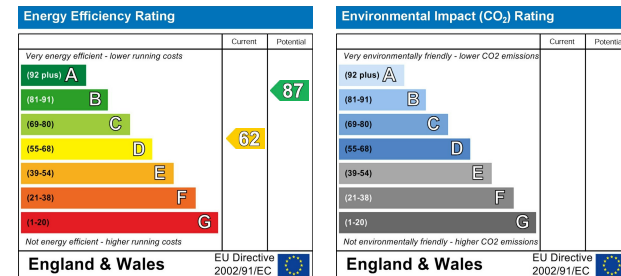
Floor Plan



Area Map



Energy Efficiency Graph



These particulars, whilst believed to be accurate are set out as a general outline only for guidance and do not constitute any part of an offer or contract. Intending purchasers should not rely on them as statements of representation of fact, but must satisfy themselves by inspection or otherwise as to their accuracy. No person in this firm's employment has the authority to make or give any representation or warranty in respect of the property.

01920 459000

hello@taylorhelps.co.uk

5 Frenchs Yard, Amwell End, Ware, Hertfordshire, SG12 9HP

www.taylorhelps.co.uk

