



Croft Road, Ware SG12 0BD

Offers over £595,000

Taylor Phelps

Estate Agency



4



2

Taylor Phelps

Estate Agency

Taylor Phelps are pleased to offer this extended four bedroom semi positioned on Croft Road in Ware within close proximity to the high street and station which serves both Hertford East and London Liverpool Street. This house further benefits from a modern open plan kitchen with separate utility, a useful study room, two bathrooms, various outbuildings and off street parking for several vehicles.







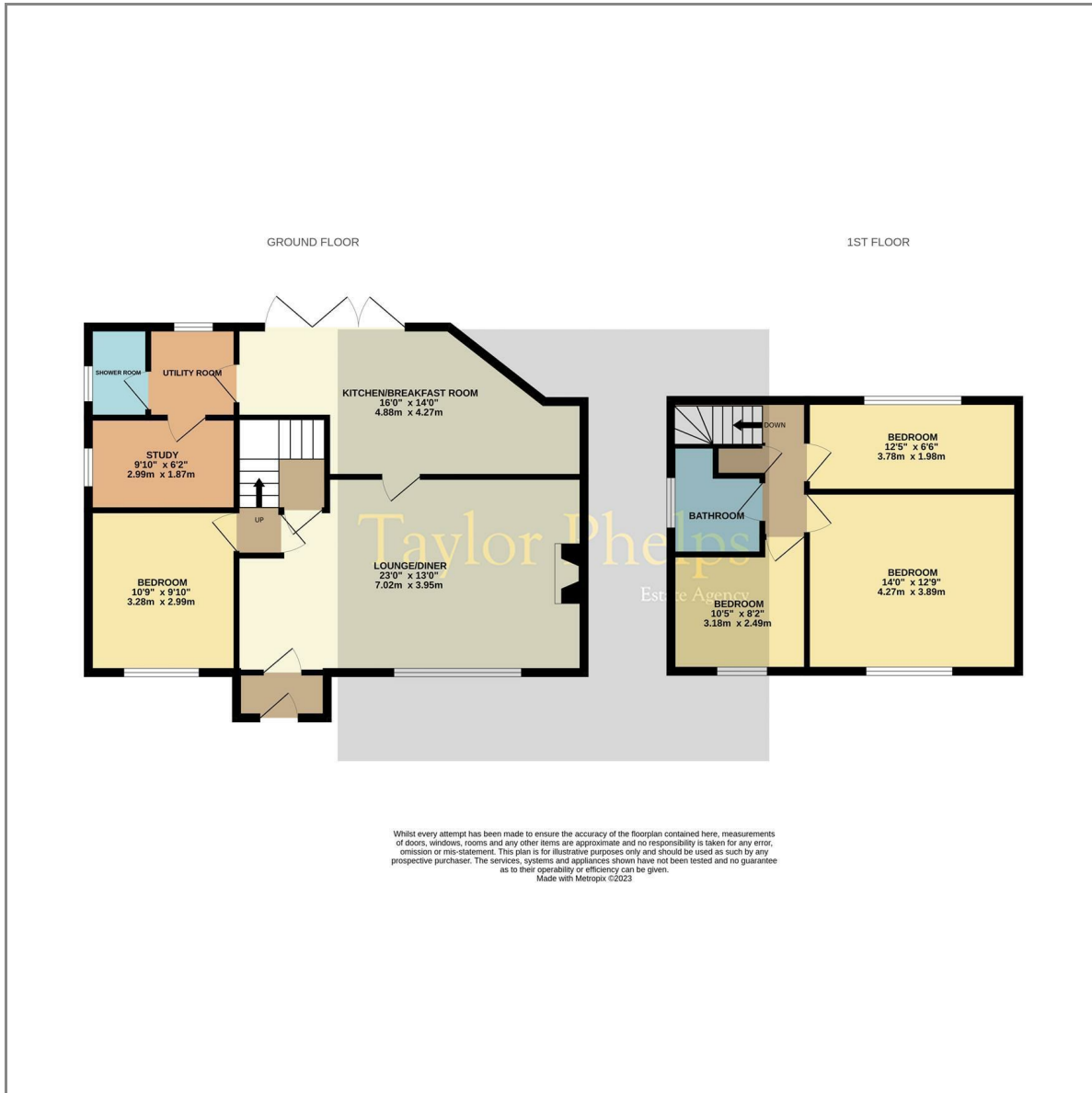
Taylor Phelps



Taylor Phelps

ESTATE AGENTS

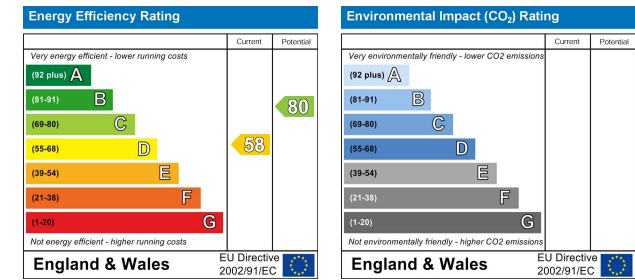
Floor Plan



Area Map



Energy Efficiency Graph



These particulars, whilst believed to be accurate are set out as a general outline only for guidance and do not constitute any part of an offer or contract. Intending purchasers should not rely on them as statements of representation of fact, but must satisfy themselves by inspection or otherwise as to their accuracy. No person in this firm's employment has the authority to make or give any representation or warranty in respect of the property.

01920 459000

hello@taylorhelps.co.uk

5 Frenchs Yard, Amwell End, Ware, Hertfordshire, SG12 9HP

www.taylorhelps.co.uk

