



Brunswick Court, Rawdon Drive, Hoddesdon EN11

Guide price £200,000



2



1

Taylor Phelps

Estate Agency

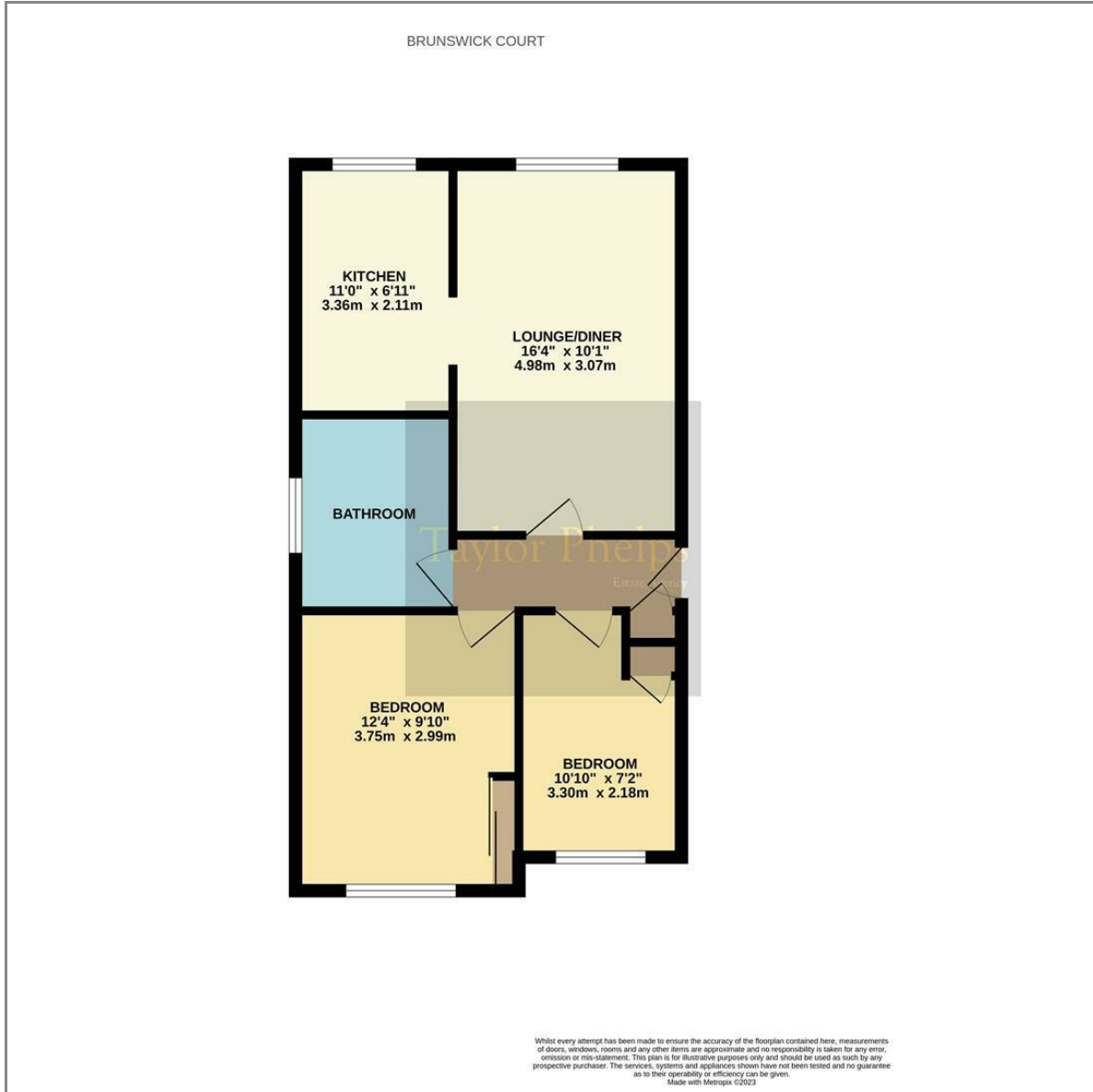
Taylor Phelps

*Taylor Phelps are pleased to offer this two bedroom apartment positioned close to Hoddesdon town centre which offers a number of convenient amenities to include high street shops, restaurants and public houses. This apartment further benefits from secure under cover parking and a long lease. Available Chain Free.*

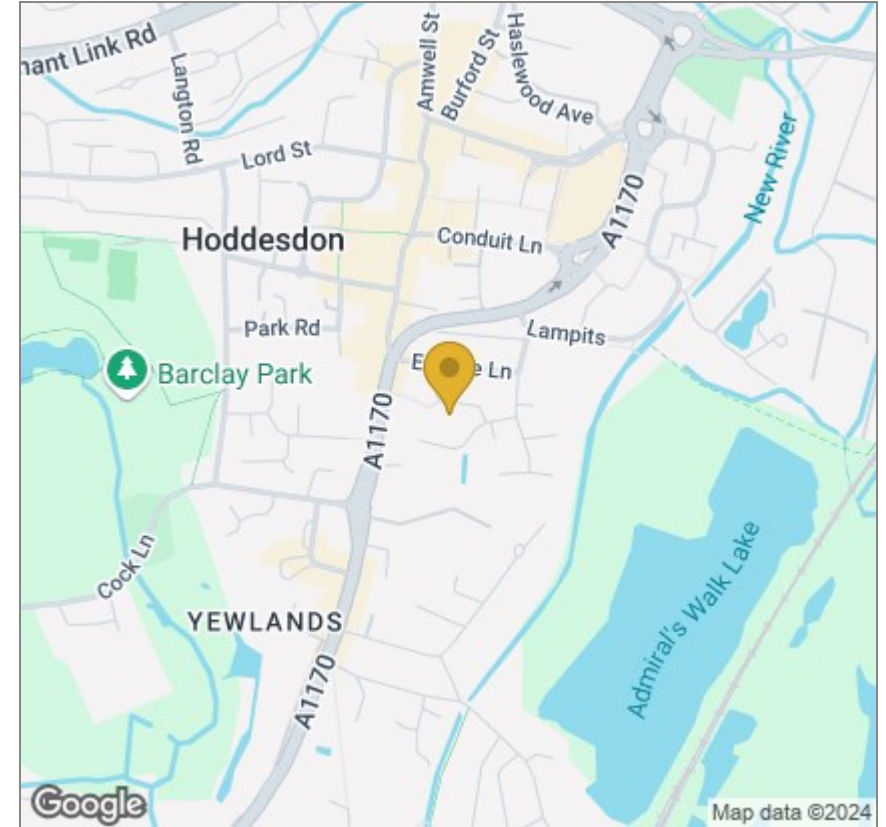




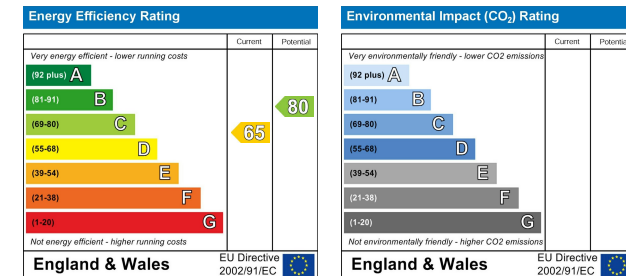
# Floor Plan



# Area Map



# Energy Efficiency Graph



These particulars, whilst believed to be accurate are set out as a general outline only for guidance and do not constitute any part of an offer or contract. Intending purchasers should not rely on them as statements of representation of fact, but must satisfy themselves by inspection or otherwise as to their accuracy. No person in this firm's employment has the authority to make or give any representation or warranty in respect of the property.

01920 459000

hello@taylorhelps.co.uk

5 Frenchs Yard, Amwell End, Ware, Hertfordshire, SG12 9HP

[www.taylorhelps.co.uk](http://www.taylorhelps.co.uk)

