

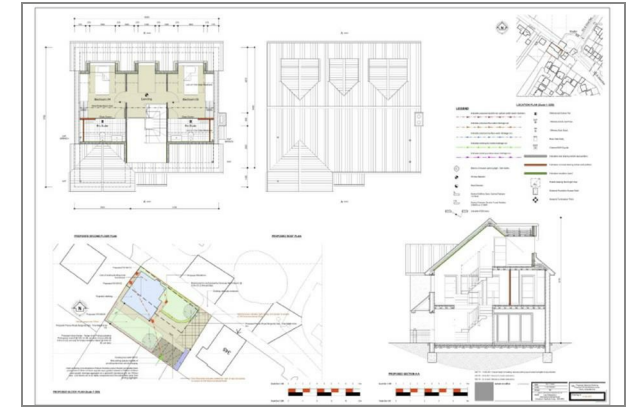
Floor Plan



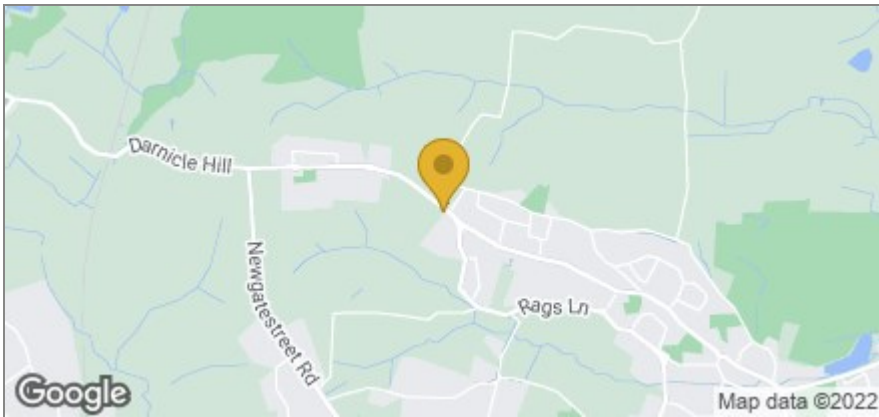
*** Sold Prior to Marketing - More Land Required ***

Development Opportunity - Taylor Phelps are delighted to offer this development opportunity!

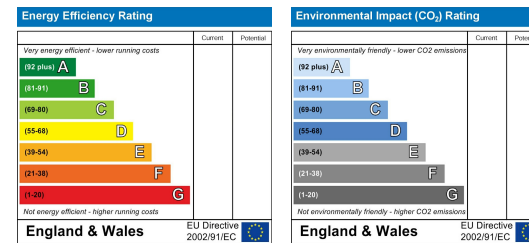
Plans passed for the erection of a detached five bedroom dwelling
Planning number: 07/21/0074/F



Area Map



Energy Efficiency Graph



These particulars, whilst believed to be accurate are set out as a general outline only for guidance and do not constitute any part of an offer or contract. Intending purchasers should not rely on them as statements of representation of fact, but must satisfy themselves by inspection or otherwise as to their accuracy. No person in this firm's employment has the authority to make or give any representation or warranty in respect of the property.

01920 459000

hello@taylorphelps.co.uk

5 Frenchs Yard, Amwell End, Ware, Hertfordshire, SG12 9HP

www.taylorphelps.co.uk

