



Tudor Walk, Church Street, Ware SG12 9XE

Guide price £550,000



3



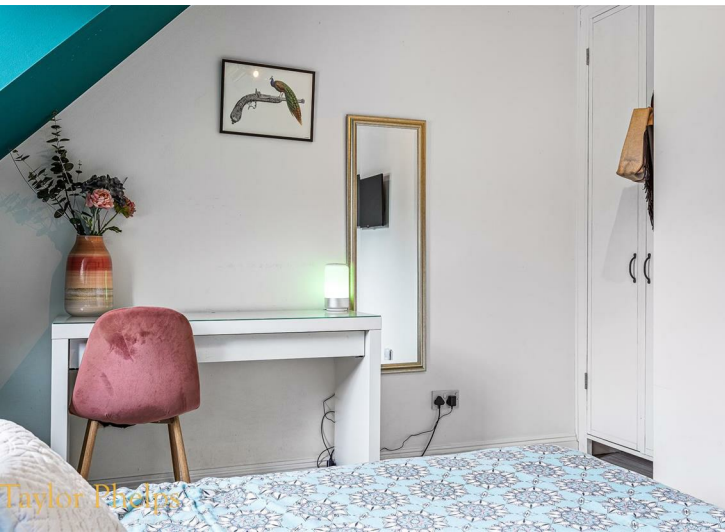
2

Taylor Phelps

Estate Agency

Tudor Walk, Ware, Hertfordshire, SG12 9XE

Taylor Phelps are pleased to offer this rarely available three bedroom end of terrace house positioned within Tudor Walk in Ware town centre, a private secluded mews located moments from the high street, river and station which serves both Hertford East and London Liverpool Street. This beautiful home offers versatile accommodation set over three levels with high spec kitchen featuring fully integrated NEFF appliances, two bathrooms, a downstairs w/c and private access to the high street. Externally there is a walled, landscaped rear garden with artificial lawn and a garage and parking for two vehicles to the front.







Taylor Phelps



Taylor Phelps



Taylor Phelps



Taylor Phelps



Taylor Phelps
Estate Agency



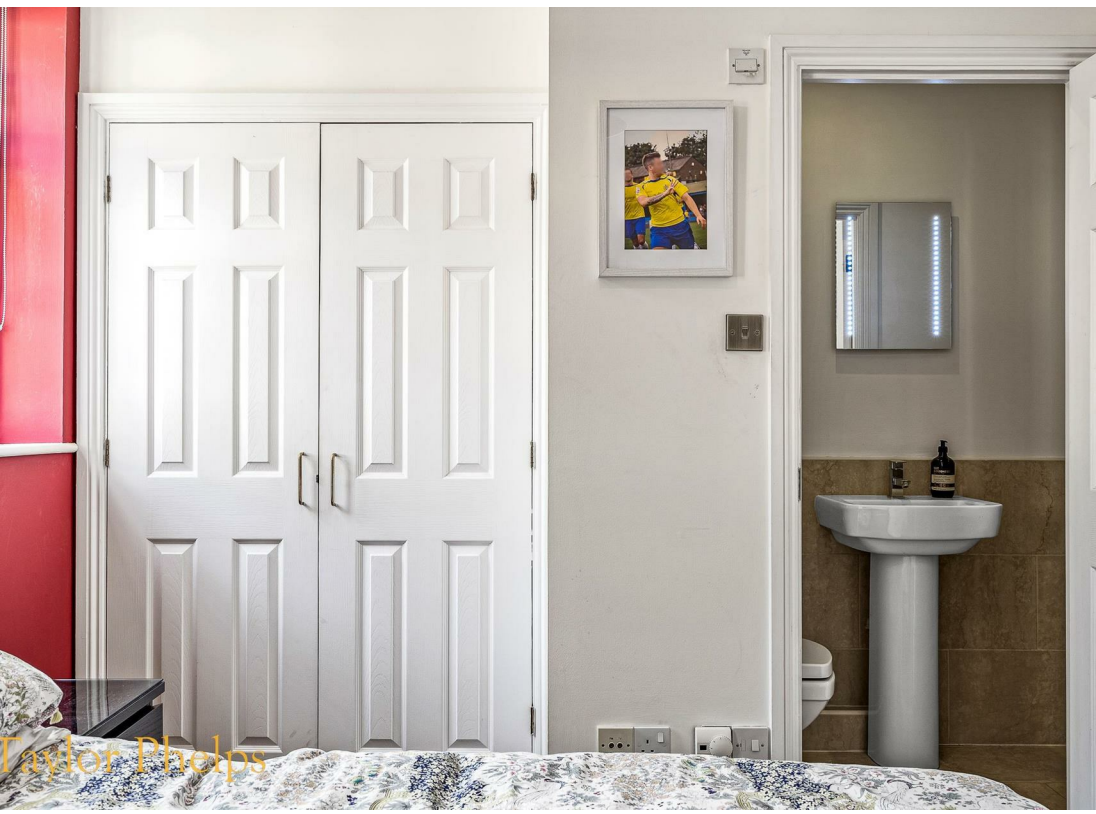
Taylor Phelps
Estate Agency



Taylor Phelps
Estate Agency



Taylor Phelps
Estate Agency



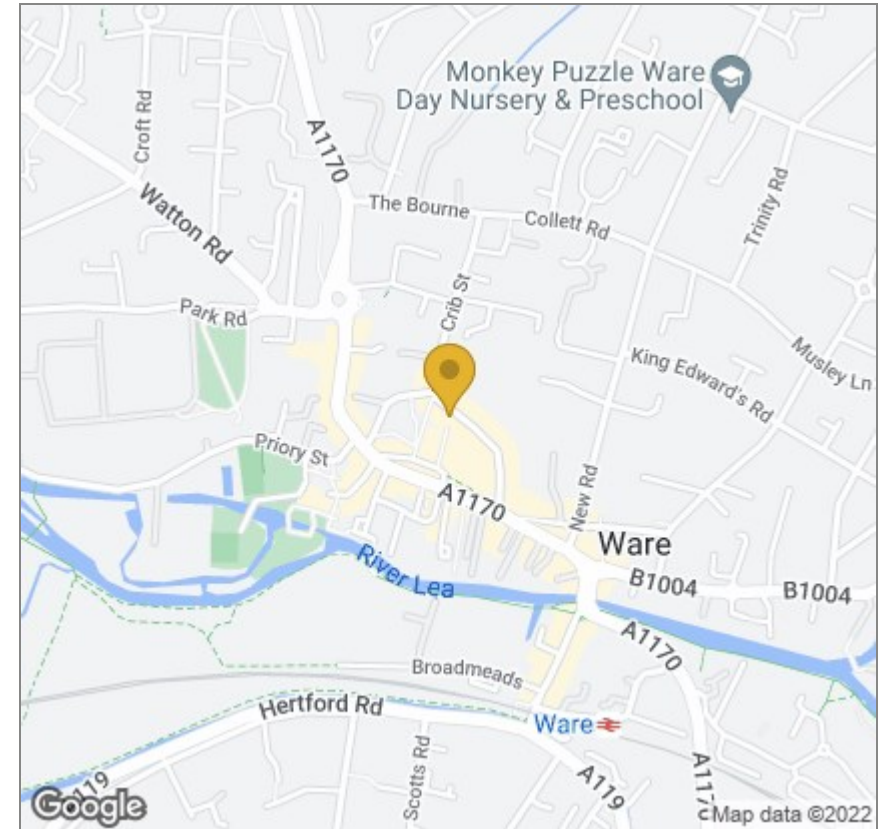


Taylor Phelps

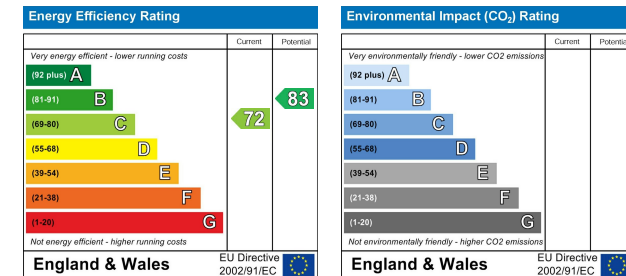
Floor Plan



Area Map



Energy Efficiency Graph



These particulars, whilst believed to be accurate are set out as a general outline only for guidance and do not constitute any part of an offer or contract. Intending purchasers should not rely on them as statements of representation of fact, but must satisfy themselves by inspection or otherwise as to their accuracy. No person in this firm's employment has the authority to make or give any representation or warranty in respect of the property.

01920 459000

hello@taylorhelps.co.uk

5 Frenchs Yard, Amwell End, Ware, Hertfordshire, SG12 9HP

www.taylorhelps.co.uk

