



Chilworth Gate, Silverfield, Broxbourne EN10 6NN

£950



1

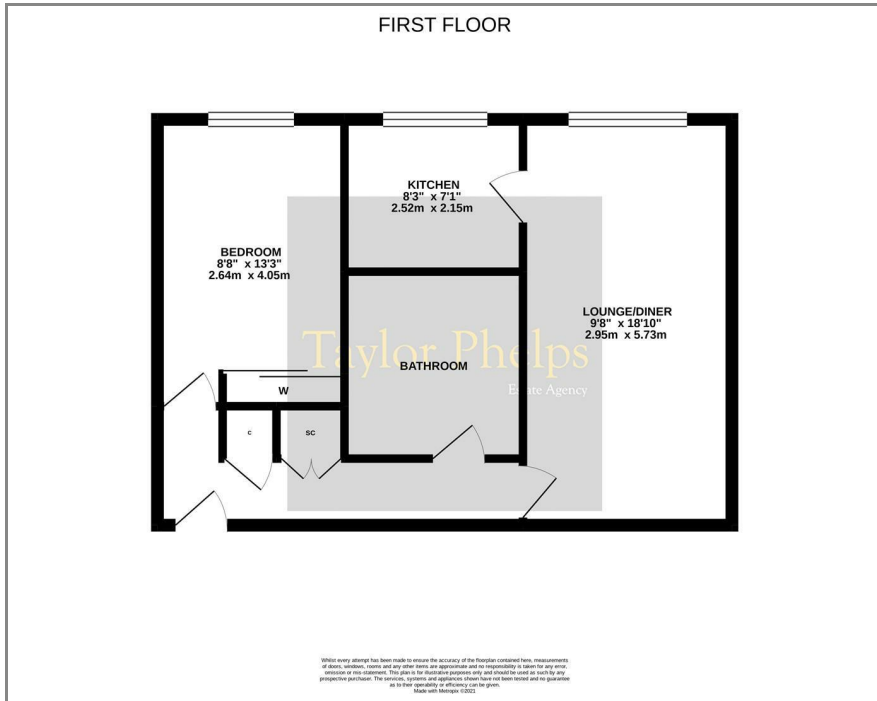


1

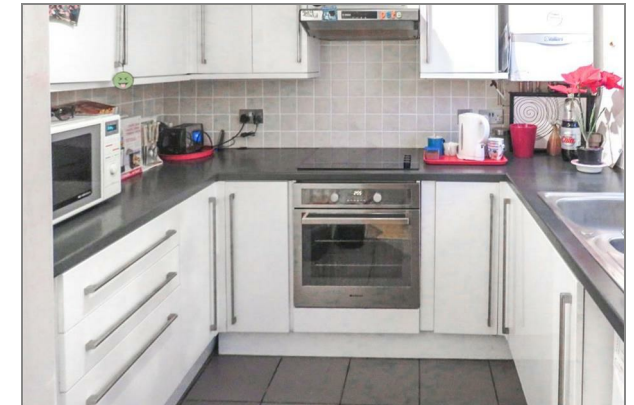
Taylor Phelps

Estate Agency

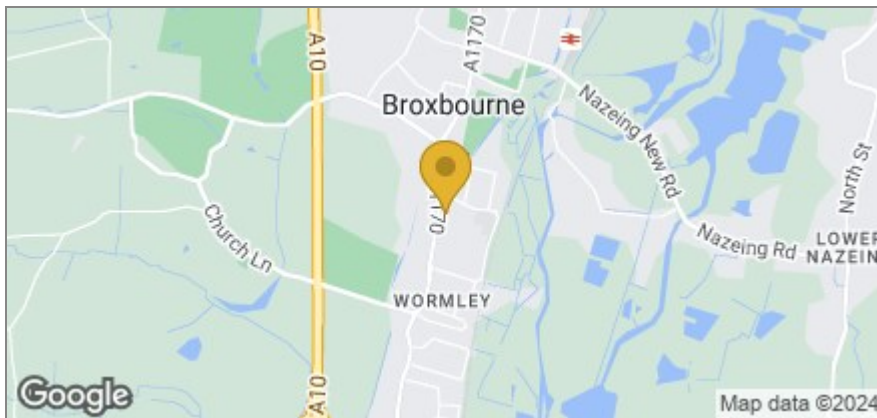
Floor Plan



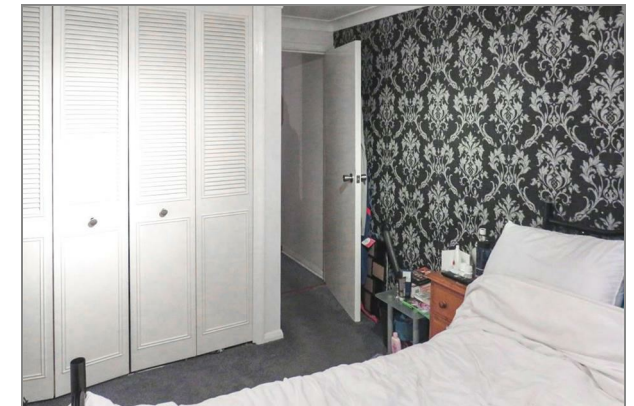
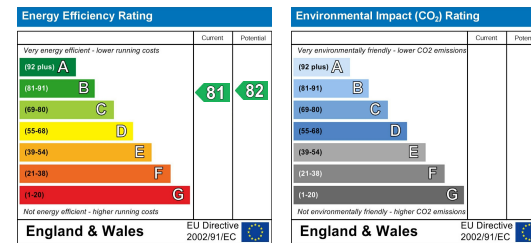
Taylor Phelps are pleased to offer this one bedroom first floor apartment situated close to Broxbourne's mainline station, which offers a good and regular service to central London. This apartment further benefits from replacement double glazed windows and gas heating.



Area Map



Energy Efficiency Graph



These particulars, whilst believed to be accurate are set out as a general outline only for guidance and do not constitute any part of an offer or contract. Intending purchasers should not rely on them as statements of representation of fact, but must satisfy themselves by inspection or otherwise as to their accuracy. No person in this firm's employment has the authority to make or give any representation or warranty in respect of the property.

01920 459000

hello@taylorphelps.co.uk

5 Frenchs Yard, Amwell End, Ware, Hertfordshire, SG12 9HP

www.taylorphelps.co.uk

