



Studley Royal House

Studley Royal Park - North Yorkshire





Studley Royal House

Studley Park - North Yorkshire

Ripon 2 ½ miles. Harrogate 12 miles. York 25 miles. (London King's Cross 1hr 50 minutes). Leeds 27 miles. A1(M) 5 miles

(Distances and times approximate)

A spectacular grade II Palladian House surrounded by the beautiful National Trust Studley Royal Deer Park.*

6 Public rooms including a magnificent Drawing Room and Ballroom.

Master Bedroom Suite with two Dressing Rooms, one with bathroom and one with shower.

Five further Bedroom Suites

Guest Wing with sitting room and 2 ensuite bedrooms

Gymnasium, Garaging, Ballroom with minstrels gallery, Study / Library



Fountains Abbey And Studley Royal

Studley Royal House stands in a magnificent elevated and private position surrounded by the protected National Trust Studley Royal Deer Park, with spectacular views across the park and beyond to Ripon Cathedral. The park, which extends to about 800 acres, was modelled by Capability Brown and is now under the protection of the National Trust and the only World Heritage site in Yorkshire. It is home to a substantial herd of deer which include Fallow, Red and Manchurian Sika and boasts the beautiful and renowned 18th Century water gardens, fed by the river Skell which meanders past the ruins of Fountains Abbey.

St Mary's of Fountain was founded in 1132 by monks from St Mary's, York following a dispute. Constructed on land given to them by Thurstan, Archbishop of York, the Abbey was admitted into the Cistercian Order in 1135. By the 13th Century the Abbey had become one of the richest religious houses in England, however, dissolution came in 1530 when the Abbey and over 500 acres of land was sold by the Crown to Sir Richard Gresham. The estate was later inherited in 1699 by John Aislaby who became Chancellor of the Exchequer in 1718 whilst Tory MP for Ripon. Expelled from parliament in 1720 following the South Sea Bubble incident he returned to Yorkshire and devoted himself to the creation of the garden and deer park.

North Yorkshire

Studley Royal is situated in wonderful rural countryside just 2 ½ miles west of Ripon, between both the Yorkshire Dales and North Yorkshire Moors National Parks. Ripon itself provides extensive facilities for all day to day needs whilst both Harrogate and York are easily accessible providing excellent shopping, recreational and business facilities.

Communications are convenient with the A1(M) being just 5 miles drive, providing motorway access both south and north, whilst York provides a regular rail service to London (Kings Cross) taking less than two hours. Leeds Bradford International airport (23 miles). There are many recreational and sporting opportunities in the surrounding area including racing at Ripon, Thirsk and York; hunting with many recognised packs including the Bedale and West of Yore; fabulous shooting, walking and riding, as well as golf at numerous surrounding courses including Harrogate and York.

Schooling in the area is excellent for all ages and includes notably Queen Margarets, York and Harrogate Ladies college for girls and Ampleforth College, now for boys and girls.





Studley Royal House, the stable building to the main house was constructed in The Palladian style between 1728 and 1732 by John Simpson to designs by Colen Campbell.

Listed Grade II*, the house incorporates the convenience of modern living with the elegance of a classic period house. Constructed of stone under a slate roof and having distinct pavilion towers in each of the four corners the house surrounds a central square courtyard overlooked by all of the main rooms and dominated by the working clock tower. Internally the house has been beautifully designed and finished and now provides numerous elegant reception rooms and bedroom suites ideal for both family and formal entertaining. Features throughout include high ceilings, many with intricate plaster work, panelling, detailed cornicing, carved door surrounds, working shutters, and elegant sash windows which provide stunning views across the deer park and courtyard.



Approached through the deer park from the East Gate, a long drive flanked by an avenue of limes leads to a private spur which forks right and leads across the park and over the Ha-Ha to the East Front of Studley Royal House. Tall automatic wrought iron gates are positioned in the central arch of the classical seven bay arcade and lead into the central courtyard. A raised central stone fountain has a cobbled turning circle surrounded with intricate and beautifully manicured parterre gardens with clipped privet hedges and topiary to each corner bordered by numerous lower and fern beds and incorporating climbing roses and passion flowers. The courtyard is floodlit by eight large wrought iron lanterns.





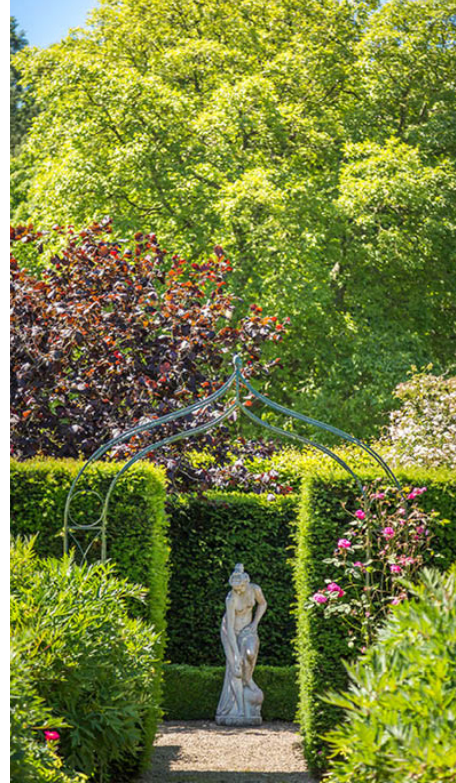


Gardens

Situated to the west of the house and approached through a coach arch from the courtyard are beautifully manicured and very private formal lawned gardens.

A gravelled walk runs around the perimeter of the gardens between a hornbeam and separate yew hedge which protect the gardens.

Elegant stone steps lead down from the pathway to the formal lawn with a large Italian garden, central Lily-pond and stone fountain. To the four corners are meticulously maintained flower borders incorporating privet hedges, clipped yew and extensive topiary. Part of the gardens are held on an assignable 99-year lease dated 21 March 1990.















Services

Studley Royal House is connected to mains water, electricity and drainage is via a mechanical septic tank in the park. Heating is via a sophisticated zoned oil fired system.

Local Authority

Harrogate Borough Council
Knapping Mount
West Grove Road
Harrogate HG1 2AE
Tel: (01423) 500600

The National Trust

Founded in 1895 the National Trust is a charity which holds and protects countryside and buildings in England, Wales and Northern Ireland. Incorporated by an Act of Parliament in 1907 its mandate is to promote ‘the permanent preservation for the benefit of the nation of lands and tenements. The act also granted the trust its unique power to declare a property inalienable meaning it can never be sold or mortgaged. Of the 573,000 acres owned by the National Trust, Fountains Abbey and Studley Royal is one of the most striking assests.

The owner of Studley Royal House has the right to use the trust’s adjoining and neighbouring property in pursuance of the trust’s policy.



Directions

From the A1 follow signs to Ripon. On the edge of Ripon follow the ring road until the signs to Fountains Abbey and the B6205 to Pateley Bridge. Proceed through the edge of Ripon straight over a set of traffic lights and at a T junction turn left on the B6265 Pateley Bridge Road. After about 1 mile take a concealed left turn signed to Studley Roger.

Proceed to the end of the Hamlet, turning right into the park, through the east gates. Continue up the avenue bearing right along a private drive the house will be found on the left-hand side.



Floorplans

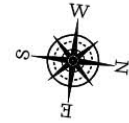
Studley Royal House, Studley Park, Ripon, North Yorkshire HG4 3DY

Gross Internal Area (Approx.)

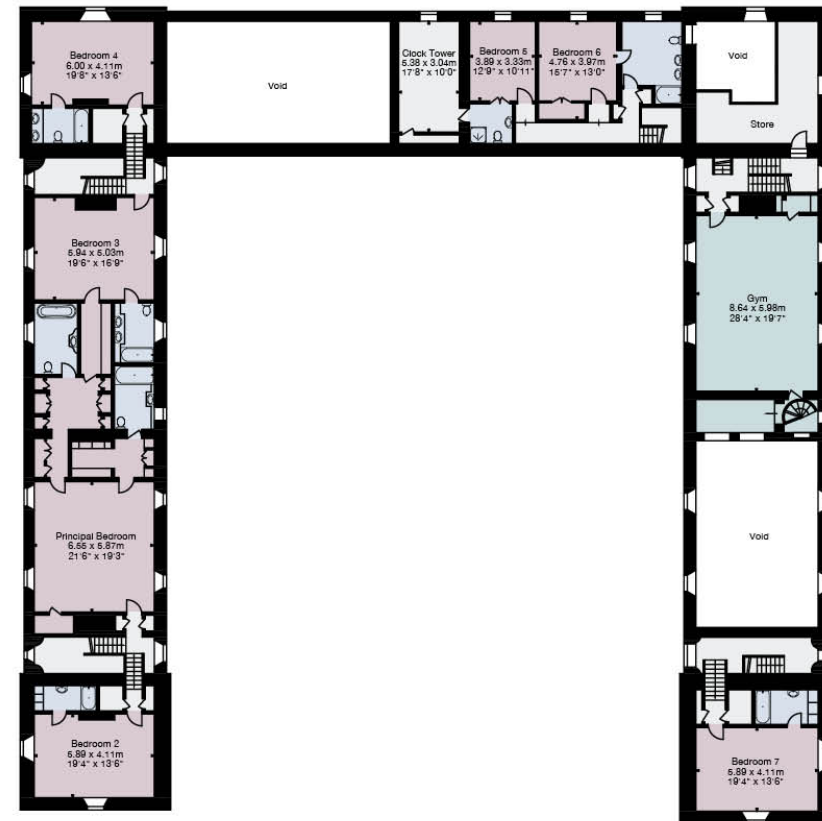
Main House = 1,087.75 sq m / 11,708.44 sq ft

Garage = 53.37 sq m / 574.46 sq ft

Total Area = 1,141.12 sq m / 12,282.91 sq ft



Ground Floor



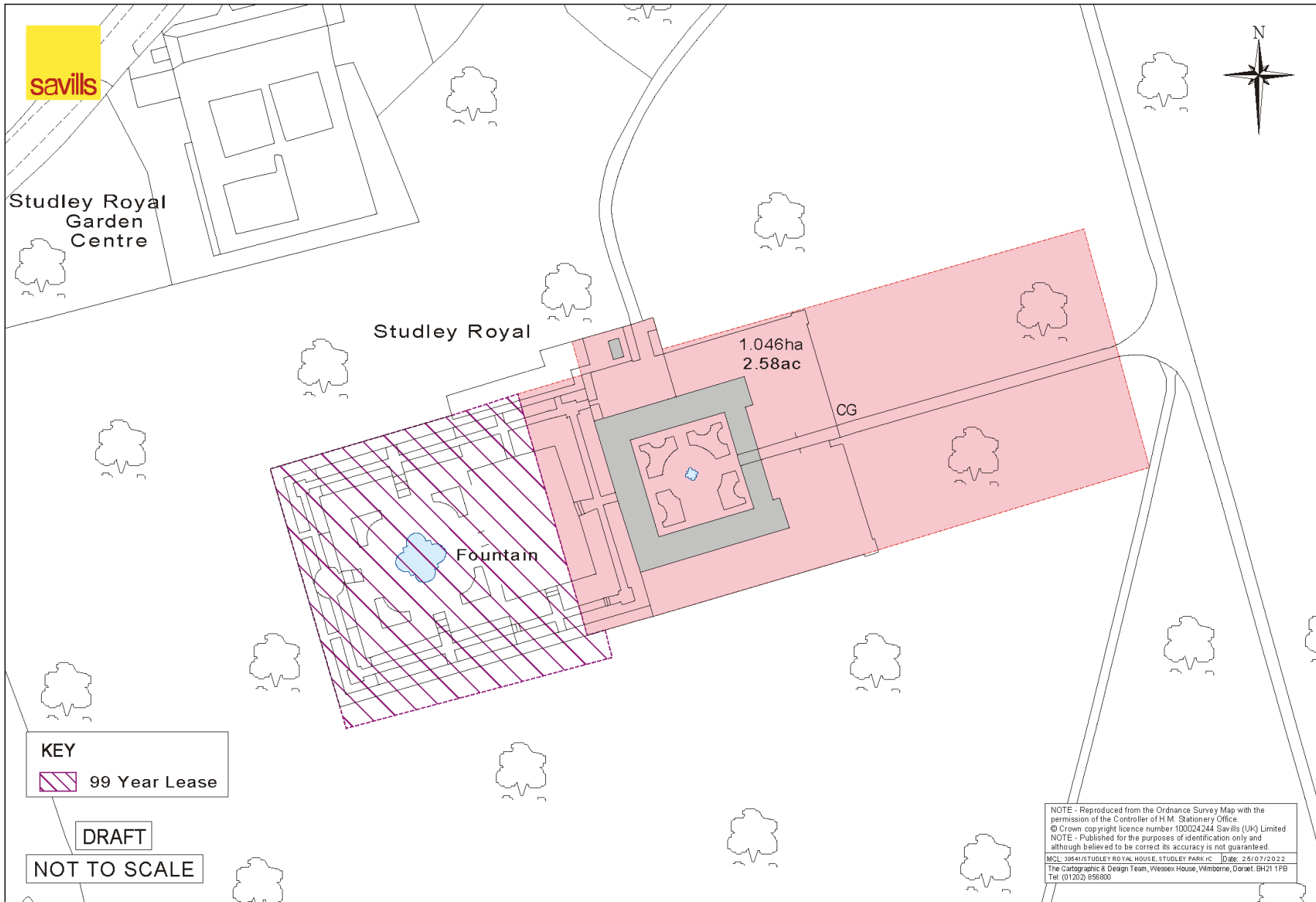
First Floor

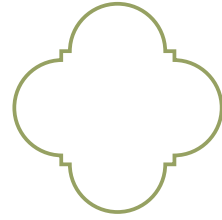


Second Floor

Important Notice: This plan is not to scale (unless specified), is for guidance only and must not be relied upon as a statement of fact. All measurements and areas are approximate only (and have been prepared in accordance with the current edition of the RICS Code of Measuring Practice). Please read the Important Notice on the last page of text of the particulars. © Capture Property Marketing 2022.

Floorplans





Studley Royal House

Crispin Holborow
Savills Country Department



cholborow@savills.com



0207 409 8881

Edward Stoye
Savills York



edward.stoye@savills.com



01904 617 821

