



## 90 Newbegin, Hornsea, HU18 1AD

£249,950

**\*\*CENTRAL LOCATION\*\***

New to the market is this 3 bedroom end terrace Victorian property, said to have been built early 1840's. Perfect central location for all local amenities. Off street parking for 2 vehicles.

The floorplan briefly encompasses; entrance hall, lounge, extended kitchen/dining room leading out via tri-fold doors into the spacious south facing rear garden, perfect for summer! The first floor has three double bedrooms, master bedroom with an en-suite and a family bathroom.

EPC- D  
Council Tax- B  
Tenure- Freehold

# 90 Newbegin, Hornsea, HU18 1AD

£249,950



- CENTRAL LOCATION
- THREE BEDROOMS
- SOUTH FACING GARDEN
- EXTENDED KITCHEN/DINER
- OFF STREET PARKING
- END TERRACE

## Front Garden

Parking for 2 cars

## Entrance Porch

Covered porch area and entrance porch

## Entrance Hall

Entrance door, under stair cupboard, radiator, spindle banister, cornicing and corbells, dado rail.

## Cloakroom (W.C)

W.C, wash hand basin.

## Lounge

14'0" x 11'8" (4.28 x 3.56)

Window to front of property, fireplace with multi-fuel fire, cornicing to ceiling, ceiling rose, picture rail, radiator.

## Dining Room

11'7" x 12'0" (3.55 x 3.68)

Open plan to kitchen, fireplace with multi-fuel fire, cornicing to ceiling, ceiling rose, picture rail, radiator, laminate flooring.

## Kitchen Diner

25'0" x 19'11" (7.63 x 6.09)

Tri-fold doors to garden, fitted wall and base units, work surfaces, bowl sink, built in double electric oven and hob, space for American style fridge freezer, tiled flooring, extractor fan, radiator, island with storage and breakfast bar, space for dishwasher, two large roof lanterns.

## External Laundry Room

Space for washer and dryer.

## First Floor Landing

Split level, cupboard, spindle banister.

## Master Bedroom

15'7" x 8'8" (4.77 x 2.65)

Two windows to side of property, built in dressing area, radiator.

## En-suite

5'10" x 4'6" (1.78 x 1.39)

Velux window to side of property, W.C, wash hand basin, step in shower.

## Bedroom 2

17'6" x 11'7" (5.34 x 3.55)

Two windows to front of property, coving to ceiling, ceiling rose, radiator, built in desk and storage.

## Bedroom 3

11'8" x 10'9" (3.57 x 3.28)

Window to rear of property, fireplace, coving to ceiling, radiator, carpeted.

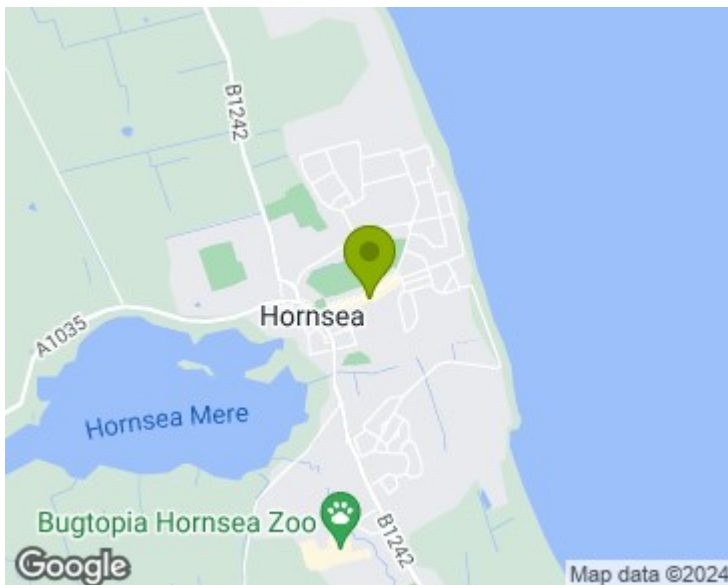
## Shower Room

5'2" x 3'4" (1.6 x 1.02)

Window to side property, W.C, wash hand basin, step in shower, heated towel rail, part tiled walls, vinyl flooring.

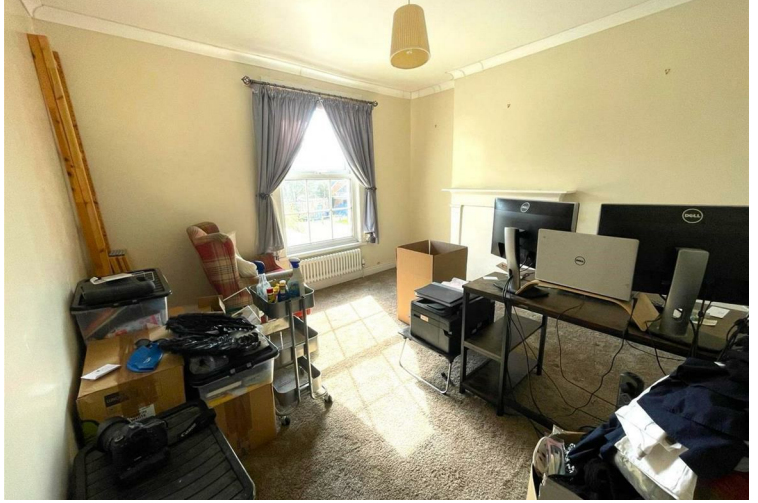
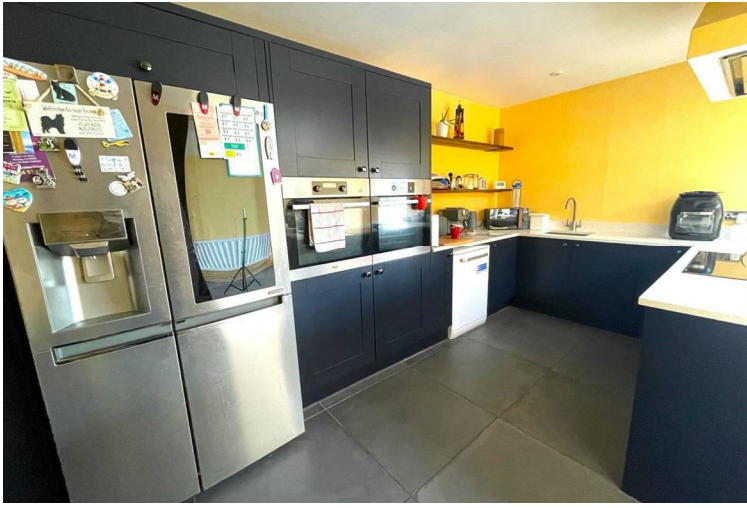
## Rear Garden

On various levels, mainly paved, brick built garden shed, fenced boundaries, outdoor kitchen area, access to rear, swim pond.

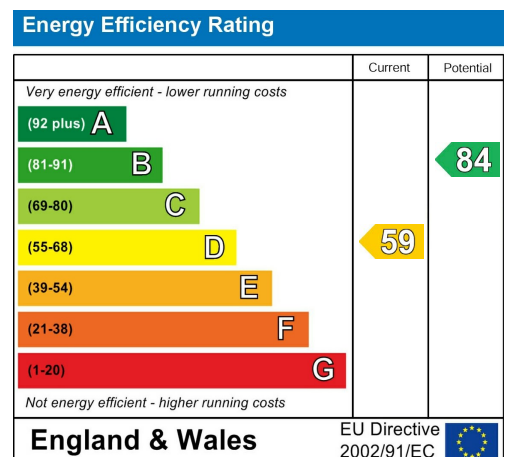


## Directions

T. 01964 532121



# FLOOR PLAN TO GO HERE



These particulars, whilst believed to be accurate are set out as a general outline only for guidance and do not constitute any part of an offer or contract. Intending purchasers should not rely on them as statements of representation of fact, but must satisfy themselves by inspection or otherwise as to their accuracy. No person in this firm's employment has the authority to make or give any representation or warranty in respect of the property.