



3 Arundel Close

Tuffley, Gloucester, GL4 0TW

Offers over £230,000



**** Two Bedroom Semi-Detached Bungalow, Large Driveway and No Onward Chain ****

Murdock & Wasley Estate Agents are thrilled to introduce this two-bedroom semi-detached bungalow to the open market. Situated in a sought-after area, it provides convenient access to local amenities and excellent transport links.

This property is available with no onward chain and boasts a spacious driveway, opportunity for modernisation, and a private enclosed rear garden.



Entrance Hall

Accessed via upvc double glazed door to side. Radiator, storage cupboard. Doors lead off:

Lounge/diner

Tv point, power points, radiator, rear aspect upvc double glazed window and door leading to the garden. Door to:

Kitchen

Range of base, wall and drawer mounted units, laminate worksurfaces, stainless steel sink and drainer. Appliance points, power points, radiator. Space for cooker, fridge, freezer and washing machine. Part tiled walls, tiled flooring, rear aspect upvc double glazed window.

Bedroom One

Power points, radiator, front aspect upvc double glazed window.

Bedroom Two

Power points, radiator, built in storage cupboard, front aspect upvc double glazed window.

Bathroom

Suite comprising, panelled bath with electric shower over, pedestal wash basin with separate taps over, low level wc, airing cupboard, fully tiled walls. Side aspect upvc double glazed window.

Outside

At the front of the property you'll find a gravel garden and tarmac driveway offering off-road parking for three cars which leads to the front door.

To the rear of the property, you'll find a low-maintenance garden that is fully enclosed with fencing. It features a spacious patio area, accented by slate chippings, all surrounded by a variety of bushes, plants, and shrubs.

Tenure

Freehold.

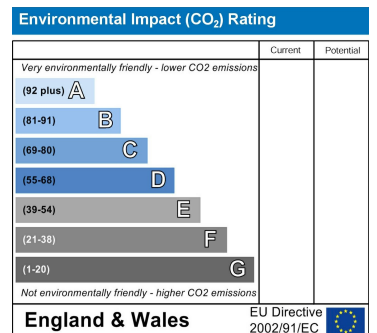
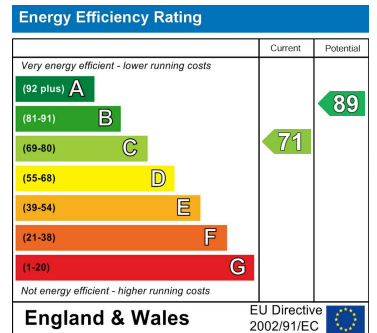
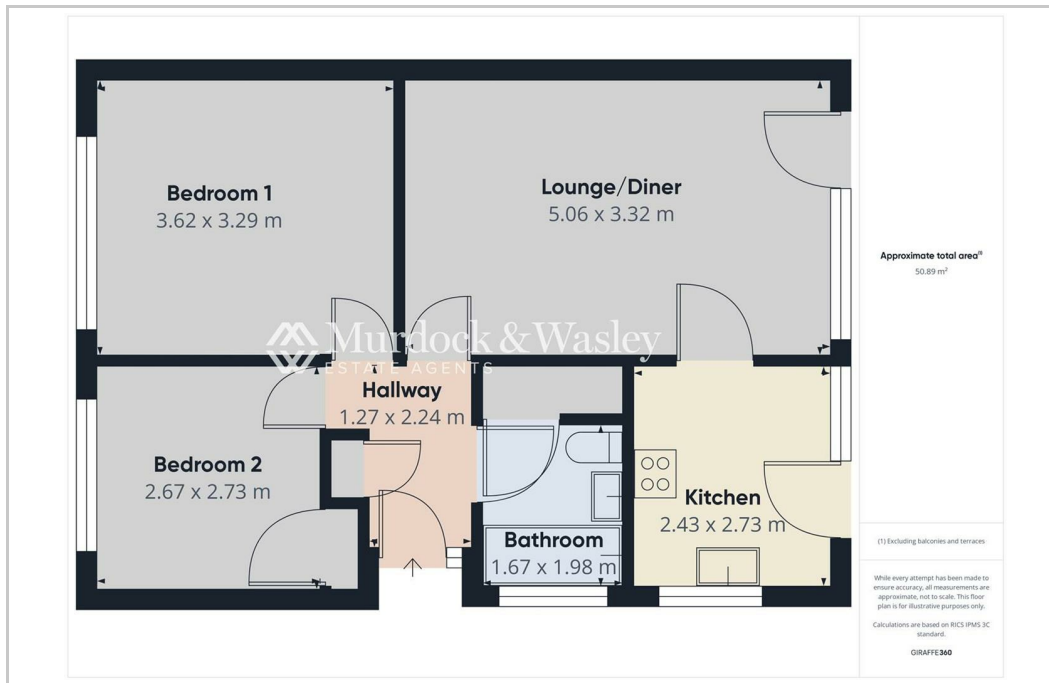
Local Authority

Gloucester City Council
Council Tax Band: B

Services

Mains water, gas, electricity and drainage.

Awaiting Vendor Approval



These particulars, whilst believed to be accurate are set out as a general outline only for guidance and do not constitute any part of an offer or contract. Intending purchasers should not rely on them as statements of representation of fact, but must satisfy themselves by inspection or otherwise as to their accuracy. No person in this firm's employment has the authority to make or give any representation or warranty in respect of the property.

95 Maidenhall, Highnam, Gloucester, GL2 8DJ email: office@mwea.co.uk

GLOUCESTER 01452 682952 FOREST OF DEAN 01594 888624 WWW.MWEA.CO.UK

Murdock & Wasley Estate Agents Ltd, Registered in England No. 12622907 at Maidenhall, Highnam, Gloucester, GL2 8DJ

