



Flat 2,14 Brunswick Square

, Gloucester, GL1 1UG

Offers in excess of £135,000



MURDOCK & WASLEY ESTATE AGENTS are excited to welcome NEW TO THE MARKET this beautifully presented one double-bedroom apartment located in the charming Brunswick Square. The accommodation includes a secure communal entrance, an entrance hallway, an open-plan kitchen/living room, a shower room, and a spacious double bedroom.

Outside, residents can enjoy a shared courtyard garden and have access to the delightful Brunswick Square garden, perfect for relaxation.

This property is an ideal investment opportunity or first-time purchase. Early viewing is highly recommended



Entrance

Via communal entrance door, stairs to all floors.

Entrance Hall

Via wooden front door, wall mounted electric heater, doors to all rooms, tiled floor.

Kitchen Lounge Diner

Base storage units, roll top worksurfaces, stainless steel sink unit with mixer tap over, single drainer, washing machine, part tiled walls, electric hob, electric oven, power points, fridge/freezer, breakfast bar, wooden sash window to front aspect, electric wall mounted heater, laminate flooring, tv point, telephone point.

Bedroom One

Laminate flooring, wooden sash window to rear aspect, coving.

Bathroom

Tiled floor, low level wc, vanity sink unit with mixer tap over, walk in shower, shaver point, extractor fan, part tiled walls.

To Rear

Shared parking for x2 spaces to the rear

To Front

Access from Lounge to courtyard garden, laid to

gravel, pedestrian side gate, Brunswick square garden is also accessible to homeowners.

Services

Mains water, drainage, and electric.

Local Authority

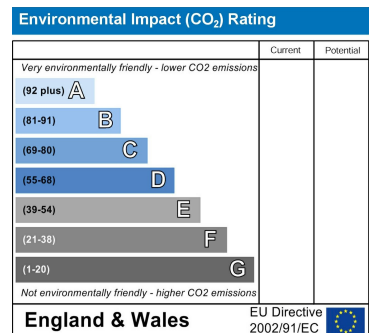
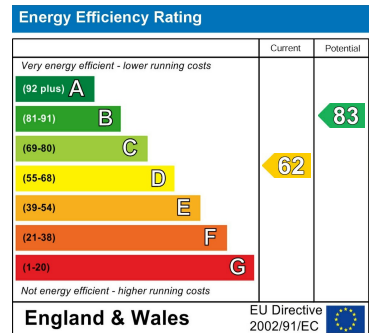
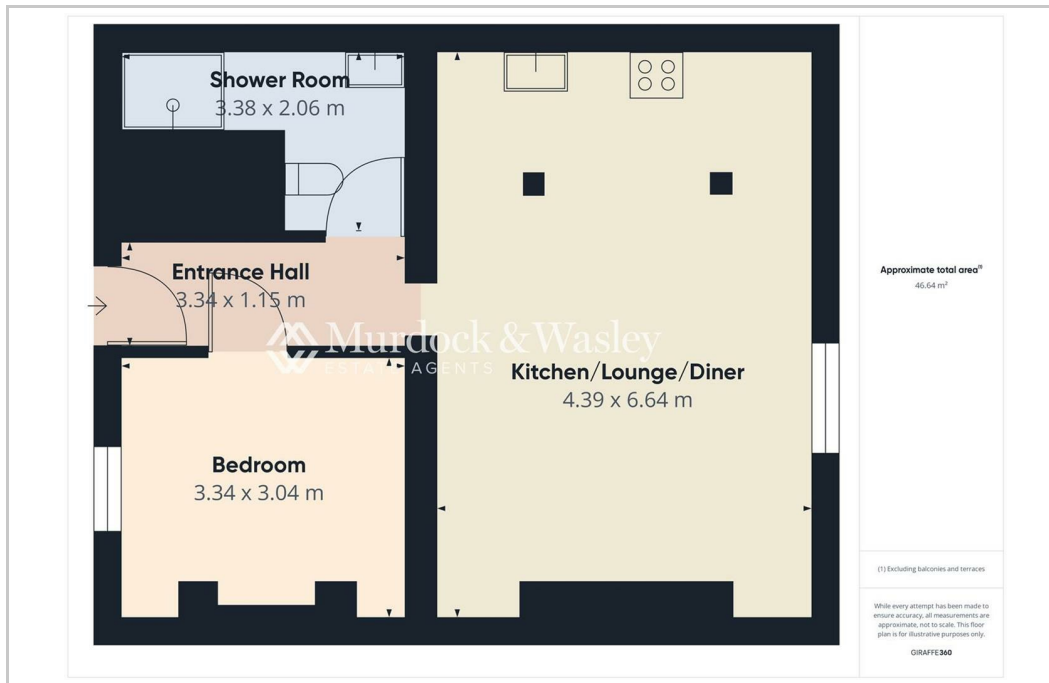
Gloucester City Council
Band : A

Tenure & Charges

Lease information : 999 years from 1st January 1985 - 960 years remaining 2024
Managing agents : 14 Brunswick Square Management Ltd
Maintenance charges £900 pa

Awaiting Vendors Approval

Details are yet to be approved by the vendor and may be subject to change. Please contact the office for more information.



These particulars, whilst believed to be accurate are set out as a general outline only for guidance and do not constitute any part of an offer or contract. Intending purchasers should not rely on them as statements of representation of fact, but must satisfy themselves by inspection or otherwise as to their accuracy. No person in this firm's employment has the authority to make or give any representation or warranty in respect of the property.

95 Maidenhall, Highnam, Gloucester, GL2 8DJ email: office@mwea.co.uk

GLOUCESTER 01452 682952 FOREST OF DEAN 01594 888624 WWW.MWEA.CO.UK

Murdock & Wasley Estate Agents Ltd, Registered in England No. 12622907 at Maidenhall, Highnam, Gloucester, GL2 8DJ

