



Higham Estate Agents



25 Castle Street

Tyldesley, Manchester, M29 8FP

£825

AVAILABLE NOW!

Please note: A minimum income of £24,750 is required to pass affordability checks

Council Tax: BAND A

Deposit - £899.00

First Months' Rent - £825.00

Total Required To Move In - £1724.00

HIGHAM ESTATE AGENTS are delighted to offer FOR RENT this TWO BEDROOM terraced property, available immediately. Located in a highly desirable area of Tyldesley the property sits a short walking distance to the ever popular guided bus way into Manchester and the towns amenities.

In brief the property comprises an entrance porch, good size lounge and kitchen To the first floor sits two good size bedrooms and three piece family bathroom. Parking available at rear of the property.

Viewing

Please contact us on 01942 889080 if you wish to arrange a viewing appointment for this property or require further information.



2



1

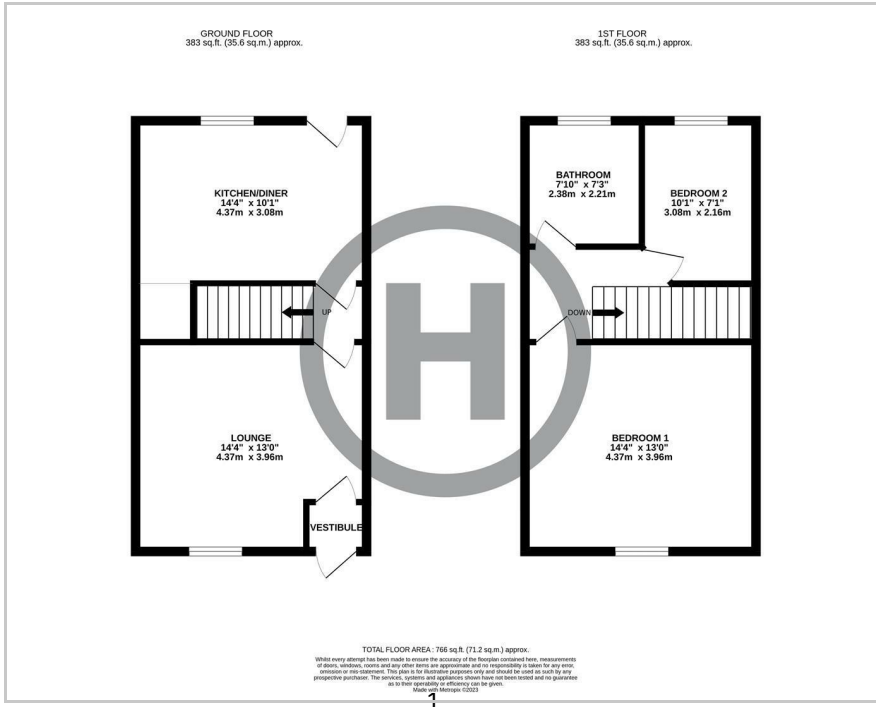


1



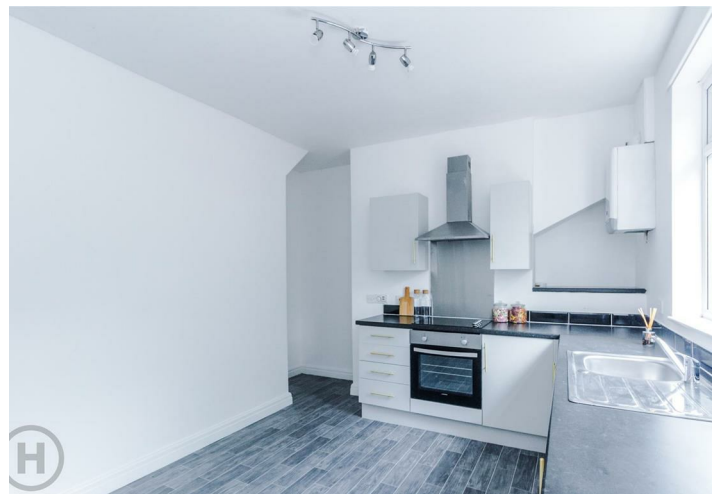
D

Floor Plan



Energy Efficiency Rating		Current	Potential
Very energy efficient - lower running costs			85
(92 plus) A			
(81-91) B			
(69-80) C			
(55-68) D			
(39-54) E			
(21-38) F			
(1-20) G			
Not energy efficient - higher running costs			
England & Wales		EU Directive 2002/91/EC	

Environmental Impact (CO ₂) Rating		Current	Potential
Very environmentally friendly - lower CO ₂ emissions			
(92 plus) A			
(81-91) B			
(69-80) C			
(55-68) D			
(39-54) E			
(21-38) F			
(1-20) G			
Not environmentally friendly - higher CO ₂ emissions			
England & Wales		EU Directive 2002/91/EC	



These particulars, whilst believed to be accurate are set out as a general outline only for guidance and do not constitute any part of an offer or contract. Intending purchasers should not rely on them as statements of representation of fact, but must satisfy themselves by inspection or otherwise as to their accuracy. No person in this firm's employment has the authority to make or give any representation or warranty in respect of the property.