

Lynx

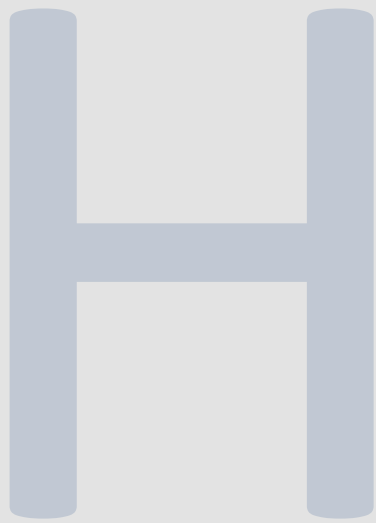
House

Pynes Hill, Exeter EX2 5JL

3,294 ft² (306 m²)

Ground Floor Office Suite

TO LET





Open
plan



15 parking
spaces



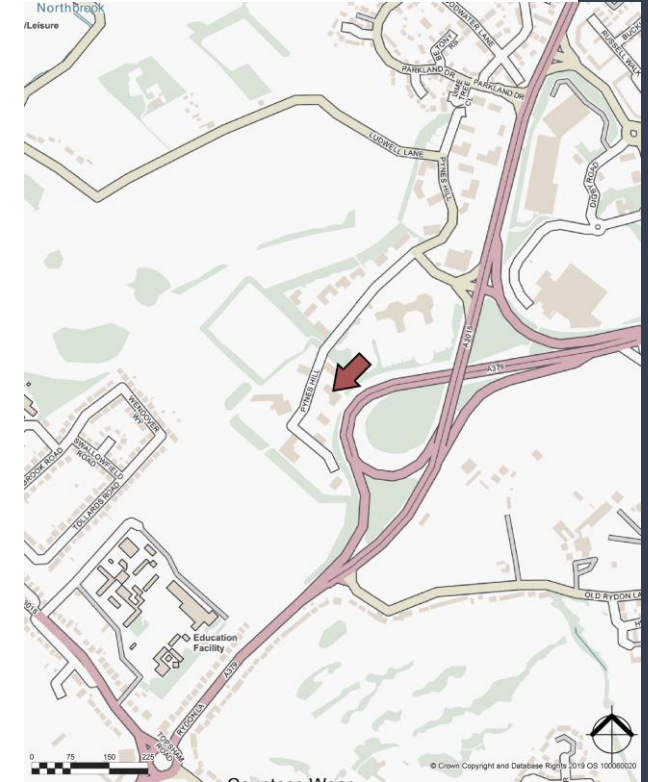
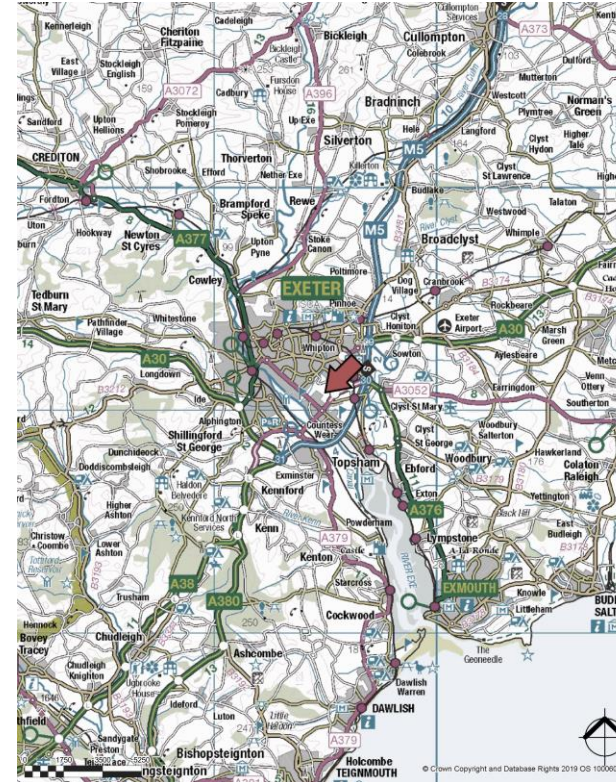
Meeting
rooms

LOCATION

Lynx House is situated on the popular Pynes Hill Office Campus, which is accessed off Rydon Lane. Pynes Hill is conveniently located approximately 1 mile from Junctions 29 and 30 of the M5. Exeter City Centre is around 3 miles away and there are regular bus services provided into the city centre and Park & Ride.

Pynes Hill is recognised as one of the prime out of town office locations and now has a popular Costa at the entrance. The campus sits nearby to Rydon Lane Retail Park and borders Ludwell Valley Park, which provides a range of scenic circular walks.

Nearby occupiers include Jurassic Fibre, Michelmores, Bertram Law, Alder King and more recently Simpkin Edwards.



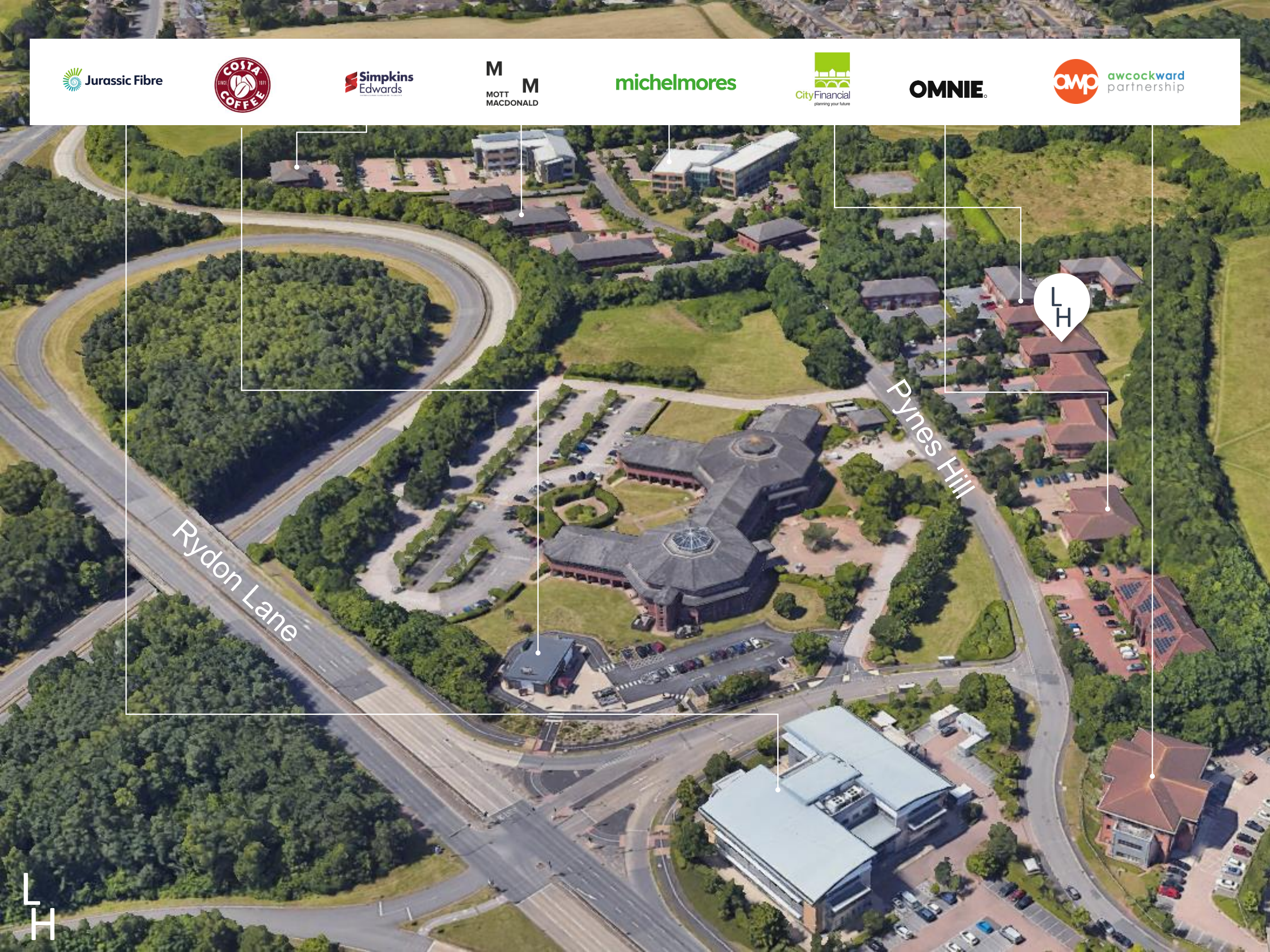
DESCRIPTION

Lynx House comprises a ground floor office benefitting from a shared entrance and car park, with 15 allocated spaces (including a private EV charging port).

At present, the suite offers open plan office accommodation with demountable partitioning forming a series of private offices / meeting rooms and a staff kitchen facility. The common areas provide WC facilities.

Externally, the suite has use of a large and attractive garden area to the rear.





Rydon Lane

Pynes Hill



ACCOMMODATION

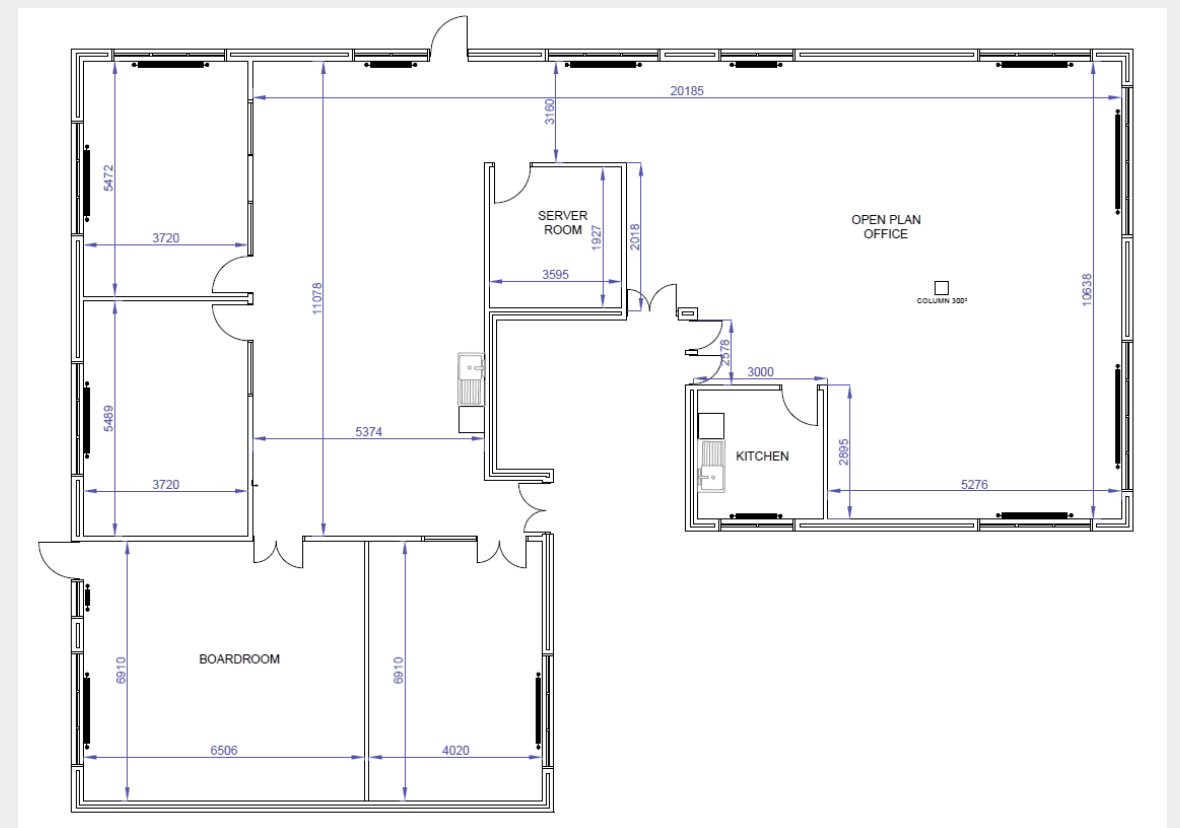
The accommodation comprises the following areas, measuring in accordance with the RICS Code of Measuring Practice, on a Net Internal Area basis:

Floor	m ²	ft ²	Parking
Ground Floor	306.02	3,294	15

ANTI – MONEY LAUNDERING

Anti-money laundering ('AML') legislation require estate and letting agents to verify the identities of parties involved in property transactions and to determine the legality of funds supporting a property transaction. A party interested in this property transaction must provide certain AML information and documents to the landlord's agent (JLL).

This also includes documents on those who may run and own the interested party, or the ultimate beneficiary of the property transaction.



FIBRE DATA

We understand that the connection to Lynx House currently supports an 80/20 Fibre SoGEA service. SoGEA broadband offers speeds of up to 80Mbps and can be combined with a VoIP service such as Horizon or Phonenumber+ to provide phone and broadband to the property.

RATES

Our enquiries of the Valuation Office Agency show that the current Rateable Value is assessed at £44,250 from 1 April 2023. The current estimate for the Rates Payable is £22,081 per annum.

LEGAL COSTS

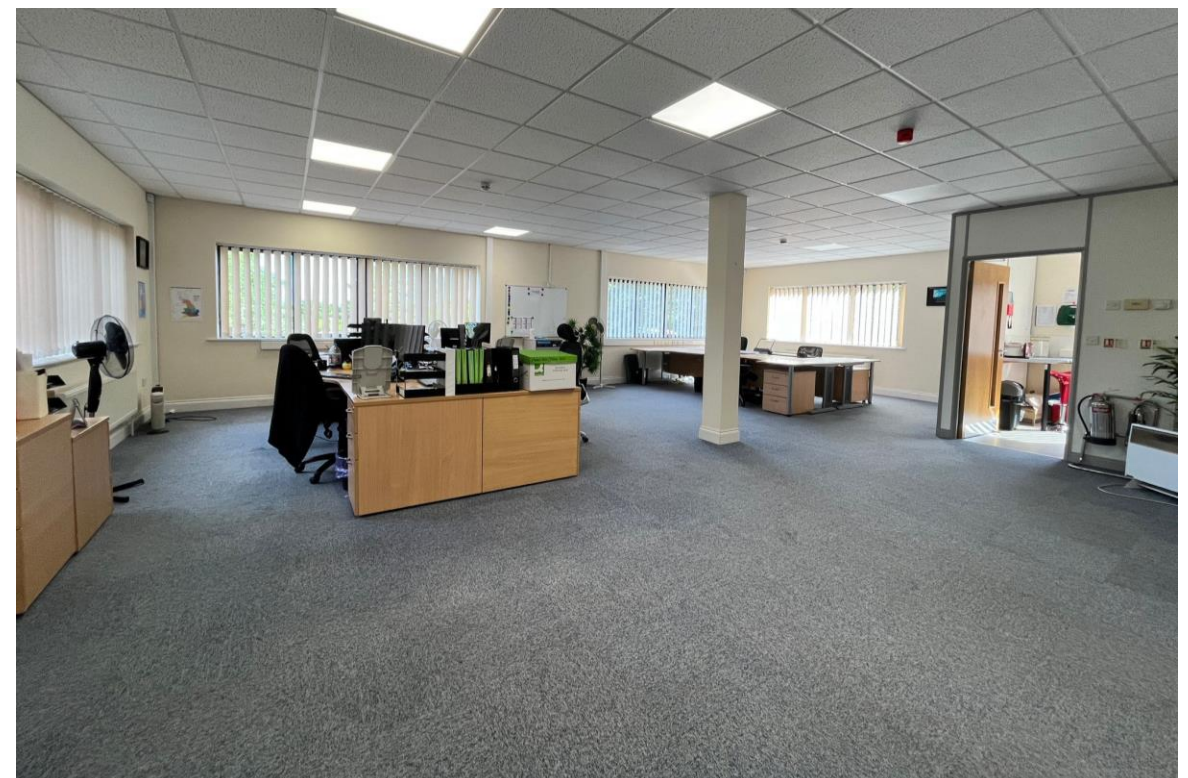
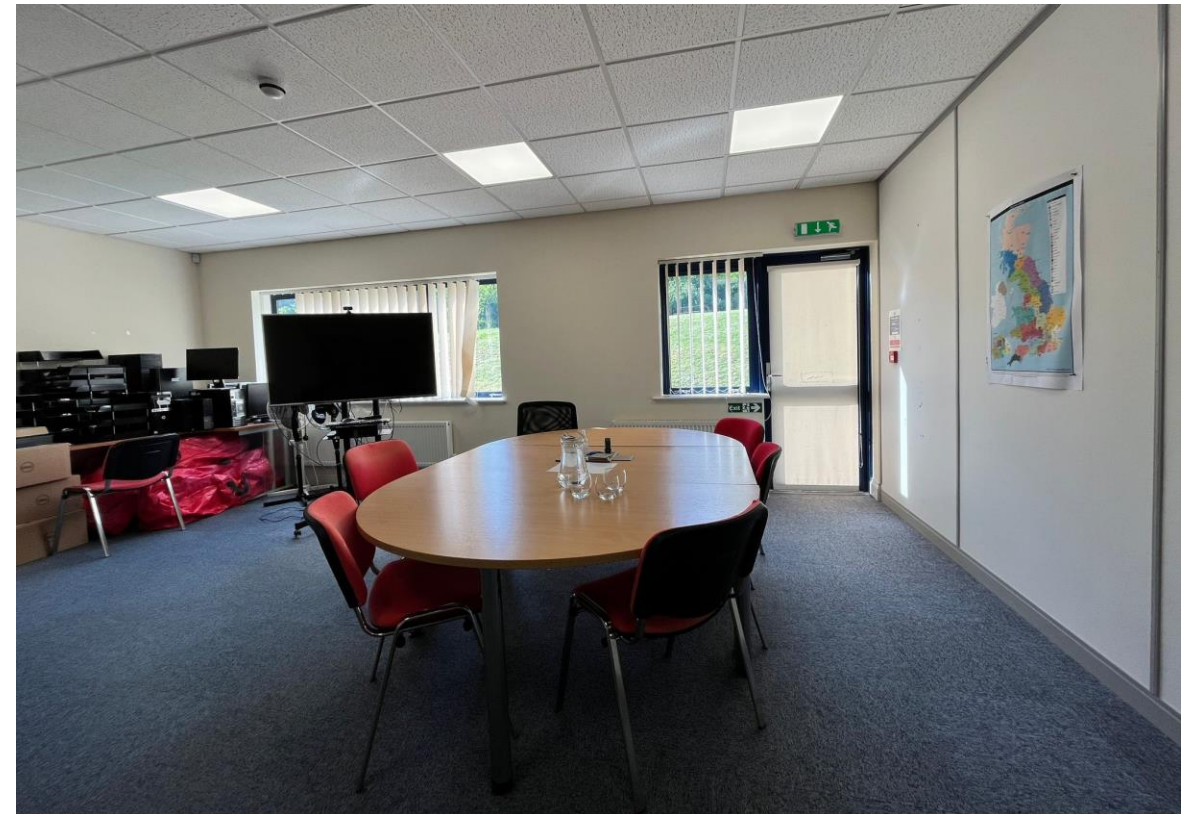
Each party to bear the costs incurred in the transaction.

TERMS

The property is available on a new lease for terms to be agreed.

EPC

An EPC is available for this property and the rating is: B (45).







VIEWING AND FURTHER INFORMATION

Strictly by appointment with the sole agents:

DISCLAIMER

The material herein is intended as a guide only, no liability for negligence or otherwise is assumed for the material contained herein by Jones Lang LaSalle, its principal or its servants or its agents. No material contained herein shall form the basis of or be part of any agreement and no warranty is given or implied as to the accuracy of the whole or any part of the material. Prospective purchasers/tenants should not rely on the material but should make their own enquiries and satisfy themselves of all aspects of the material. Any liability by Jones Lang LaSalle, its principal, its servants or its agents in any way connected with the brochure, whether or not such liability results from or involves negligence, will not exceed £1000. May 2024



Katie Purrington

t: +44 (0) 1392 429 381

m: 07513 482451

e: katie.Purrington@jll.com

Kye Daniel

t: +44 (0) 1392 429 307

m: 07525 913326

e: kye.daniel@jll.com