



# Exeter Business Park

Just a few minutes from the M5, Exeter Business Park is a professional, modern and versatile location with easy access for workers, commuters and meetings.

Join a like-minded community with endless opportunities to grow your network!



1 Emperor Way  
Exeter Business Park  
EX1 3QS

Located -  
1mile from M5  
4 Bus stops within a 7min walk  
2.5miles from Exeter City Centre  
0.3miles from Subway, Starbucks, Domino's and Miller & Cater  
2.5miles from Exeter Airport with direct bus stop outside the Centre  
0.6miles from supermarkets  
Holiday Inn next door

Parking -  
Free parking on site for day visitors & discounted rates for clients with offices 24/7

### Amenities;

- ✓ On-site parking
- ✓ Elevators
- ✓ Disabled toilet
- ✓ Shower
- ✓ 3x food vans
- ✓ 2x coffee vans
- ✓ 2x on-site coffee machines
- ✓ Centre team at reception
- ✓ Meeting rooms
- ✓ Lounge
- ✓ 3x kitchens
- ✓ Vending machine
- ✓ Bike racks
- ✓ 24/7 monitoring CCTV
- ✓ 24/7 building access to clients
- ✓ Lake with Koi fish & seating area
- ✓ Business grade WiFi





- Reception

# Communal Break out Areas

---

First Floor Kitchen



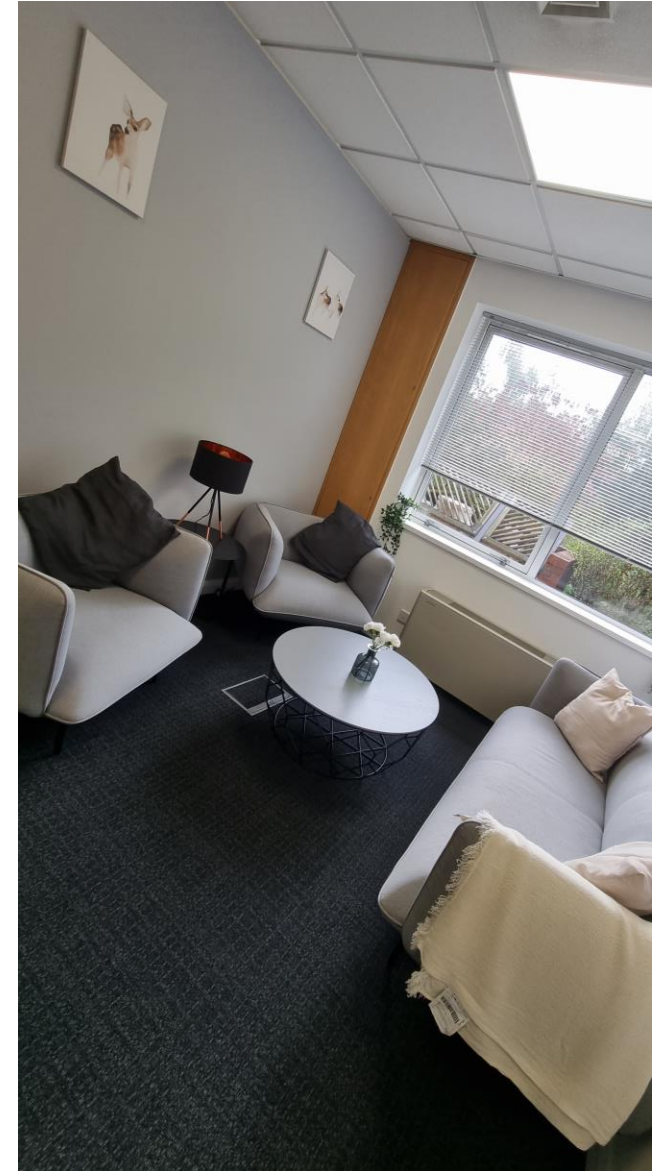
Ground Floor Kitchen



# Meeting Rooms



G08



G17





107



108



201B



203



204/205

