



VIDA

WORKSPACES

*Dean Clarke House, Exeter*

LOVE *your* SPACE





*Vida Workspaces encourage  
a more inspired work life.*

The perfect working environment is so much more than a desk. At Vida, we focus on the things that bring people together, such as great hospitality, impressive health and wellbeing facilities, and a strong sense of community.





*Our purpose is  
to make work life  
beautiful.*

**Vida fully serviced workspaces balance premium locations with a focus on the things that bring people together.**

We create sustainable spaces that spark collaboration, fuel imagination, and encourage entrepreneurs and business professionals to live a more enriching and inspired work life.

*A fresh new presence  
in the world of flexible  
workspace.*





# *Space that works for your business*

**Whether you're a solo entrepreneur or a growing team with global ambitions,** at Vida you'll find unique work environments that have been designed to help your business thrive.

From dedicated desks to serviced private offices, all of our spaces provide access to meeting rooms, concierge facilities, and state-of-the-art connectivity and support you would expect from a modern workspace. We take care of the finer details, so you can focus on what you came here to do: your very best work.



# Our People



---

**Robin Pugh** BSc (Hons) MRICS  
*Managing Director*

Robin is a Chartered Surveyor. His 25-year track record in the real estate industry has been spread across the UK, Hong Kong and the Middle East. He is highly experienced in the fields of office space leasing, occupier representation and flexible office space. Prior to launching Vida, Robin was a board director at Omega and led JLL's flexible workspace team in the EMEA region. Robin takes responsibility for the day-to-day running of Vida, and he has big plans to grow the brand into a major industry player.



---

**Kai Horstmann**  
*Operations Director*

Kai's background is in elite sport. A professional rugby player for 17 years, he's played for Harlequins, Worcester Warriors, Exeter Chiefs, and learnt from some of the best coaches in the world. Now he's applying his unique knowledge and experience to help forge a team and build a culture where exceptional is the norm.



---

**Gemma Smith** BA (Hons) Marketing  
*Head of Marketing*

Gemma is a dedicated marketer with a track record of delivering compelling communication strategies that build brand equity and drive commercial success. Her creative mind and proven experience in the property sector mean she's perfectly positioned to establish the Vida brand on the national stage.





---

### **Mark Edworthy** B.Eng MBA

*Director, Vida Workspaces.  
Co-Founder and Group Managing  
Director Burrington Estates*

Mark has been involved with property development, construction and financing for more than 20 years. His résumé includes names such as Booz Allen Hamilton and Merrill Lynch Investment Managers, where he worked in the private client discretionary investment management business running a team responsible for £700m of client assets. In 2011 Mark joined Burrington Estates. There he oversaw substantial growth and helped transform the company into the thriving multi-disciplinary group that exists today.



---

### **Paul Scantlebury**

*Director, Vida Workspaces.  
Co-Founder and Group Managing  
Director Burrington Estates*

A property development Director with a 25-year background in planning and construction, Paul has spearheaded more than one hundred successful commercial and residential projects across the UK and Europe. His astute commercial awareness and ability to recognise a project's potential is reflected in Burrington Estate's portfolio, buildings that have been revived and transformed into modern living and working environments. Paul places huge emphasis on the importance of high-end quality and flair, and is never afraid to take on a challenge.





# Our Locations

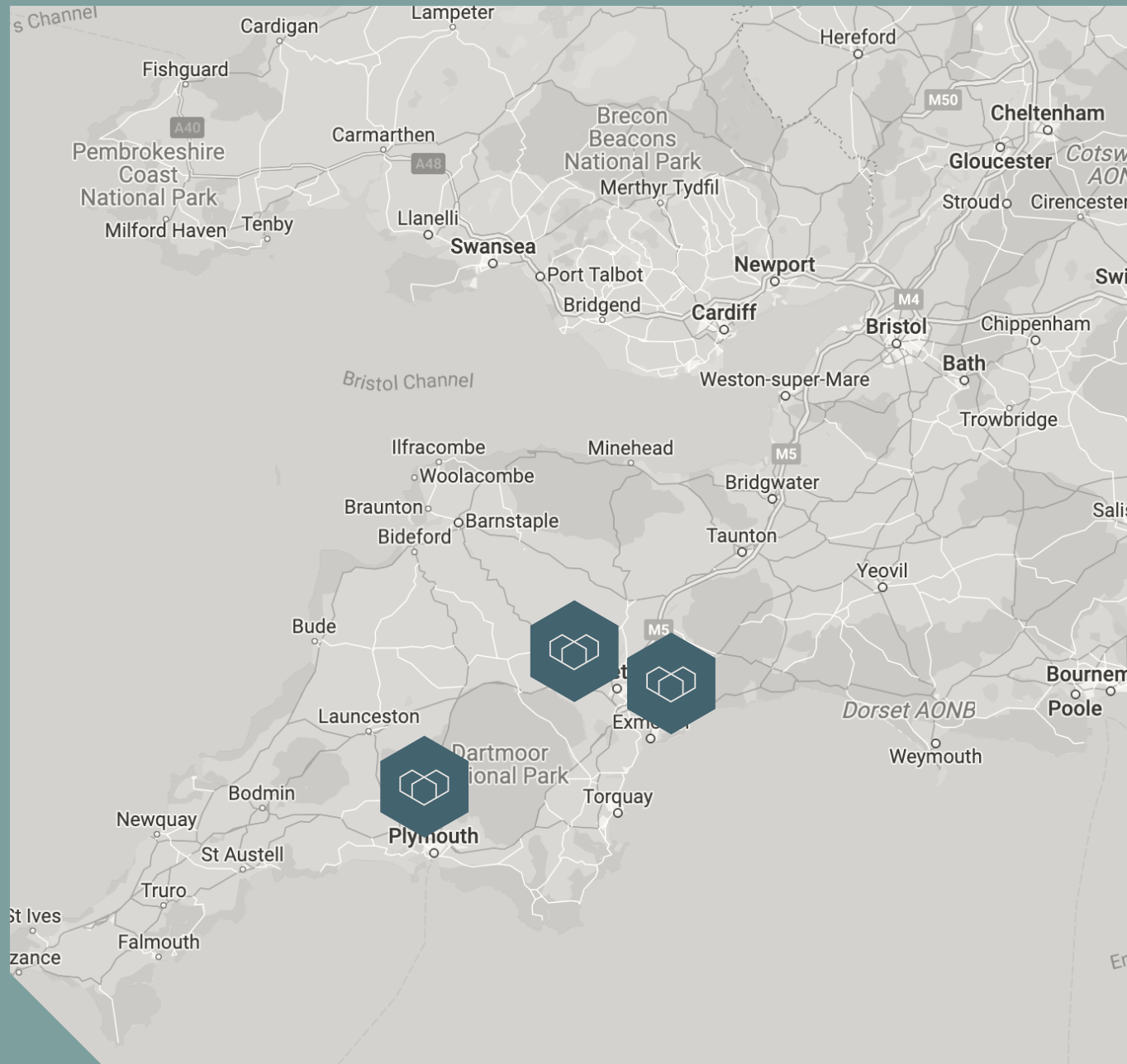
*The most inspiring places to work in the Southwest.*

**There are currently three Vida Workspaces across the Southwest.**

Each one has it's own unique character and sense of style, but all have been designed and furnished to our own very particular standards.

## OPEN SITES

-  Winslade Park Exeter
-  Dean Clarke House Exeter City Centre
-  Ocean Crescent Plymouth



# DEAN CLARKE HOUSE

*Exeter*

This prominent Grade II\* Georgian property has been transformed into the most luxurious residential and business accommodation in Exeter. The development has been designed to bring the best of Mayfair to Exeter.

*Mayfair standards  
in the heart of south  
west england*














# Create the right impression

**Opulent, exclusive and fitted to a premium standard,** Dean Clarke House is a flagship development for Vida that brings Mayfair standards to the heart of the Southwest.

This ambition is reflected in the high-quality finishes of the offices, meeting rooms and grand communal spaces. A perfect home for the image-conscious start up or boutique agency looking to create an impression in the heart of the city



## FEATURES & SERVICES

- |   |  |
|---|--|
|  Central location                              |  24/7 Access  |
|  Breakout area, kitchenettes and club lounge |  A dedicated office support team; reception, cleaning and maintenance |
|  Meeting rooms                               |  Ability to flex and grow with your business                          |
|  Event spaces                                |  Connection to a network of members and businesses                    |
|  Showers                                     |  |

## TENANT SERVICES

- Concierge reception service for greeting visitors, receiving post and booking meeting rooms
- Unlimited high speed internet
- 24/7 access to the building with electronic door fobs
- Access to conference room, meeting rooms and spacious Clubroom
- Hot drinks supplied to shared tea points
- Shared use of the courtyard gardens
- A dedicated office support team for cleaning, maintenance and security







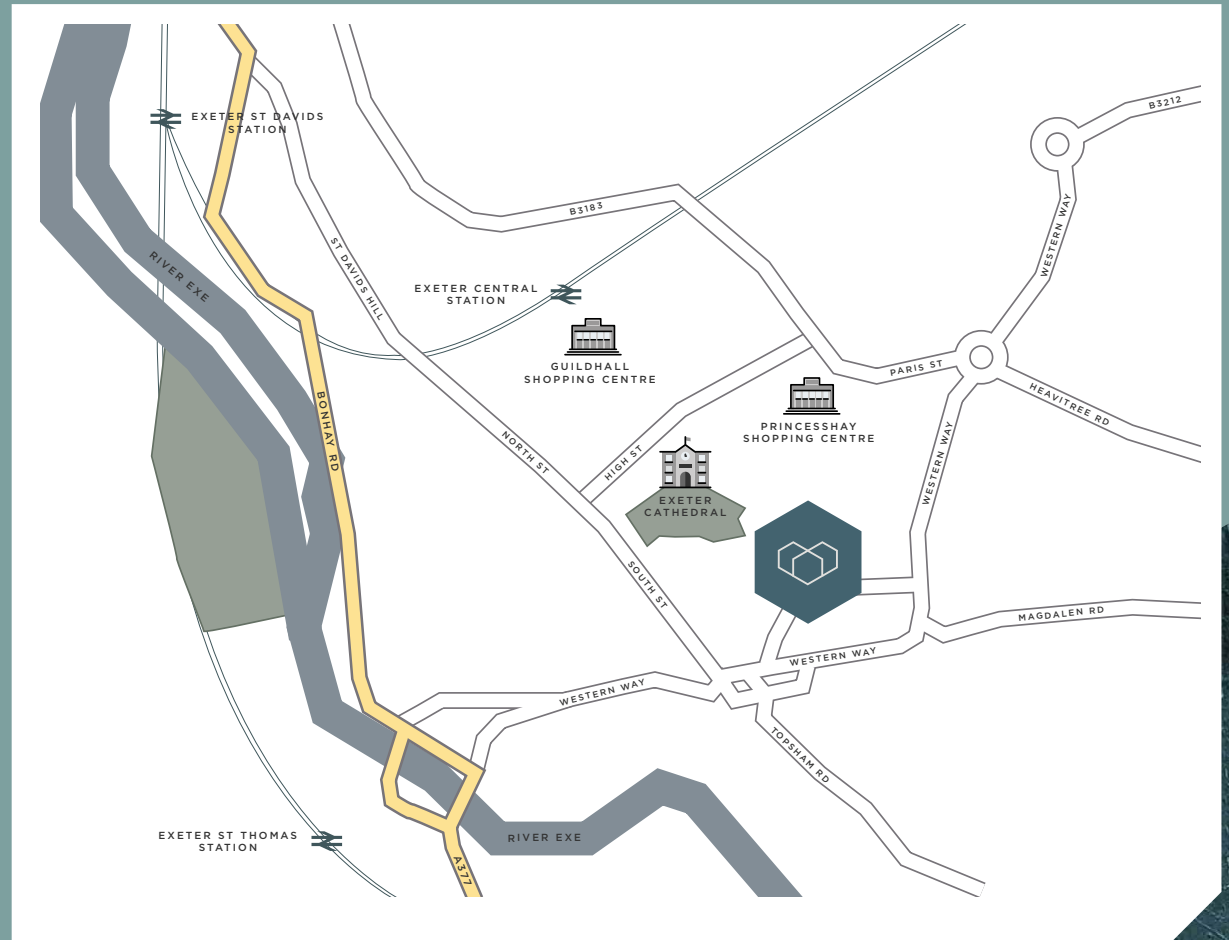
# Location

Set in the heart of the city's elegant **Georgian business quarter** and once serving as the Royal Devon and Exeter Hospital, the prestigious Dean Clarke House occupies an exclusive position on an attraction treelined avenue just a stone's throw from the city's many amenities and travel links.

Exeter is unparalleled in the region for the choice of things to do, with a wealth of hidden gems to discover and a vibrant, chic social scene. More than 2,000 years of history sit on the doorstep, including the remains of the old city walls opposite Dean Clarke House, forming part of the City Wall Trail, one of many historical walks which lead around the city.

## TRANSPORT LINKS

-  London - 170 miles
-  Exeter St Davids Train Station - 1.6 miles
-  Exeter Central Train Station - 1 mile\*
-  Exeter Airport - 6.3 miles

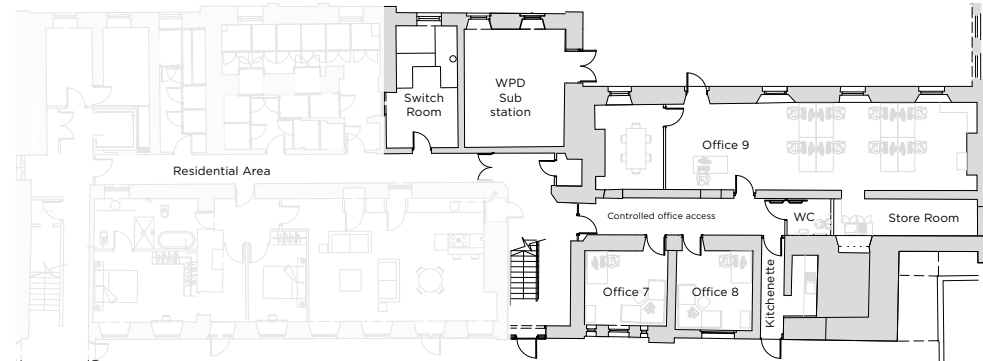




# Serviced Offices

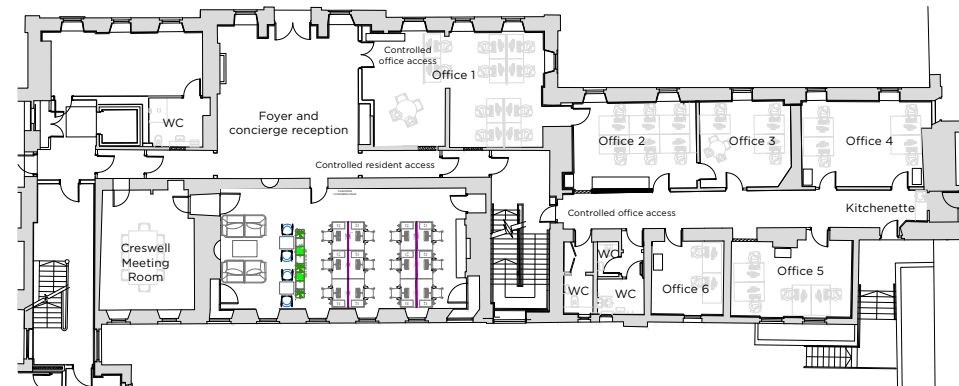
**A serviced office is an enclosed, lockable space just for you and your team.**

You can shut yourself away to work in privacy, or open the door for full access to the DCH facilities and the vibrant Vida community. Our offices are fully furnished and fitted out to the highest standards, and can be arranged in a way that perfectly suits your needs.



**BASEMENT FLOOR**

BASEMENT FLOOR	Sq(m)
Office 7	13
Office 8	13
Office 9	69



**GROUND FLOOR**

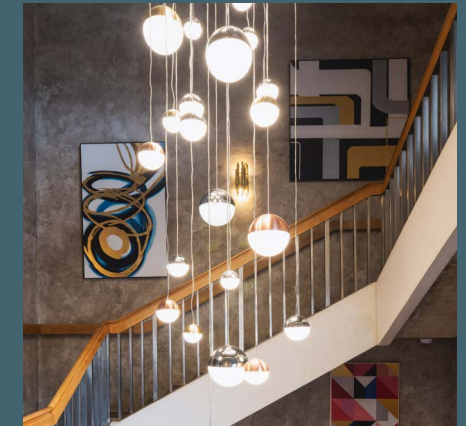
GROUND FLOOR	Sq(m)
Office 1	49
Office 2	25
Office 3	19
Office 4	26
Office 5	22



# Co-working

**Co-working membership provides a space within DCH that you can call your own.** It includes your own dedicated desk, ergonomic chair and lockable storage, all reserved just for you.

You'll also have full access to the other facilities within Dean Clarke House, such as meeting rooms and our concierge service, as well as valuable opportunities to meet and collaborate with your fellow co-workers.





# *The Creswell Room*

The Creswell Room is a boardroom-style meeting room that can comfortably sit up to 10 people for face-to-face meetings. It's also fully equipped with a large screen TV and the technology necessary to ensure seamless digital connectivity too.

Vida members receive preferential booking rates and complimentary tea and coffee for all meetings.





# Events

At the heart of every Vida venue is a local community of likeminded business people. We're committed to building each one as strong as possible.

Every Vida venue hosts a calendar of regular events to bring people together. It's not just about networking. Events can include inspiring talks and presentations, social gatherings, and even get-togethers to improve everyone's health and wellbeing.





# Contact Us

If you'd like to know more about our mission to make work life beautiful, we'd love to hear from you.

Email [hello@vidaworkspaces.com](mailto:hello@vidaworkspaces.com)

## Vida Workspaces

Winslade Park,  
Manor Drive,  
Exeter EX5 1FY

[f](#) [i](#) [t](#) [in](#)





LOVE *your* SPACE



VIDA  
WORKSPACES