



## 136 Salmon Street, London, NW9 8NT

\*A BEAUTIFUL THREE BEDROOM, TWO BATHROOM FAMILY HOME LOCATED ON SALMON STREET\* We are delighted to bring to the market this superb semi detached property located on one of the finest and most sought after roads in the area.

Wembley Park & Kingsbury tube stations are close by, along with highly regarded schools such as St Robert Southwell Primary School and the French International Lycee'. Fryent Country Park is also within easy access, offering peaceful walks, stunning views and open spaces for kids to play.

The property briefly comprises of a welcoming entrance hall, a ground floor shower room, a modern fitted kitchen, a spacious through lounge, a rear aspect morning room overlooking the well manicured garden, three first floor bedrooms with fitted wardrobes and a family bathroom with a separate W/C.

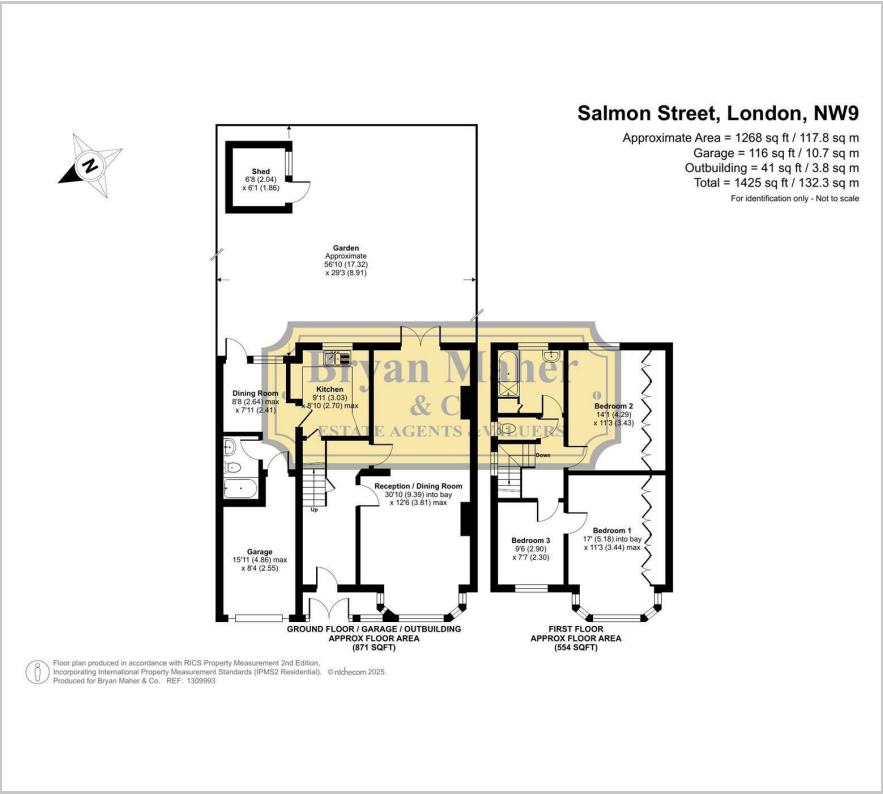
The front driveway provides off street parking and leads to the garage which could easily be converted and extended above to create additional living accommodation subject to the usual consents being obtained.

- BEAUTIFUL THREE BEDROOM FAMILY HOME
- PRIME SALMON STREET LOCATION
- IMMACULATE CONNDITION THROUGHOUT
- GROUND FLOOR SHOWER ROOM
- MODERN FITTED KITCHEN
- LARGE THROUGH LOUNGE
- SEPARATE MORNING ROOM
- AMPLE FURTHER EXTENSION POTENTIAL
- CLOSE TO THE FRENCH INTERNATIONAL LYCEE'
- CHAIN FREE SALE

**£849,950**



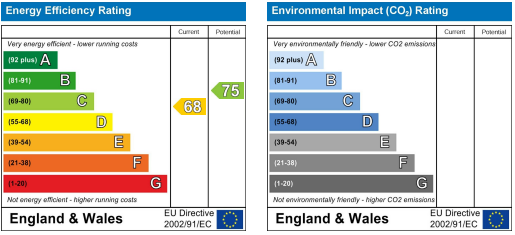
Floor Plan



Area Map



Energy Efficiency Graph



These particulars, whilst believed to be accurate are set out as a general outline only for guidance and do not constitute any part of an offer or contract. Intending purchasers should not rely on them as statements of representation of fact, but must satisfy themselves by inspection or otherwise as to their accuracy. No person in this firms employment has the authority to make or give any representation or warranty in respect of the property.