



51 Corringham Road, Wembley, HA9 9PX

AN EXTREMELY SPACIOUS FIVE BEDROOM, TWO BATHROOM, DETACHED FAMILY HOME
 We are delighted to bring to the market this large double fronted detached property located on the Barn Hill Estate, boasting a unique position close to Fryent Country Park, offering you quick access to enjoy open spaces for children to play, along with quiet tranquil woodland walks and stunning panoramic views.

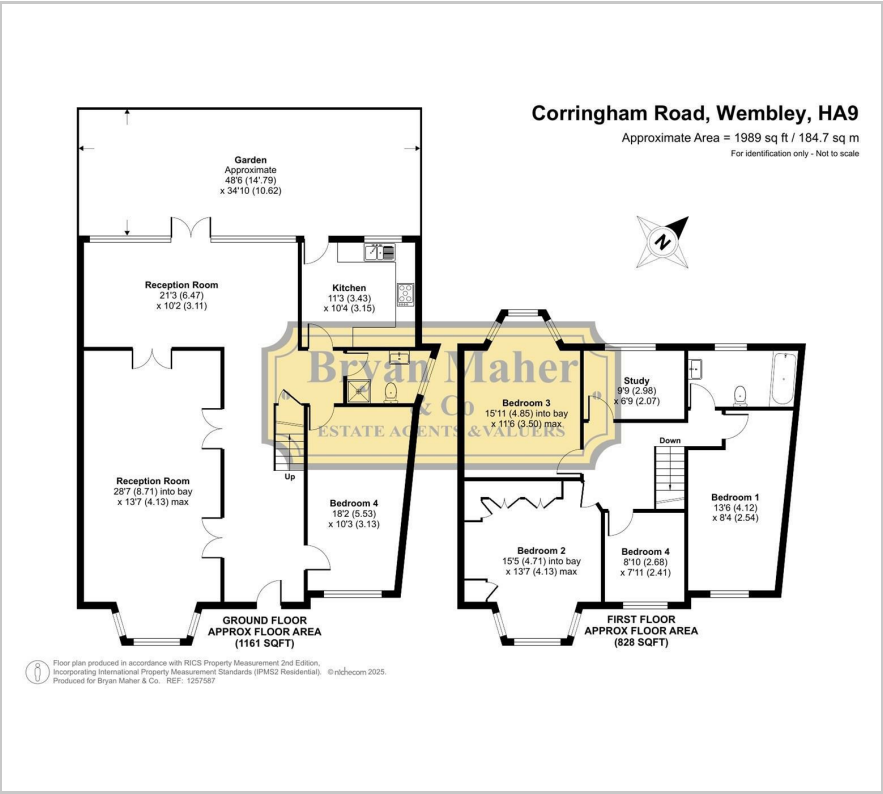
The property briefly comprises of a welcoming entrance hallway, a large fitted kitchen, a through lounge, a side reception room, an additional rear reception room, a downstairs shower room, five first floor bedrooms and a spacious modern family bathroom. The front of the property provides off street parking with a nice size garden to the rear.

Wembley Park tube station is within close proximity, providing you with the Metropolitan & Jubilee lines. These are perfect for quick access into London & the surrounding areas.

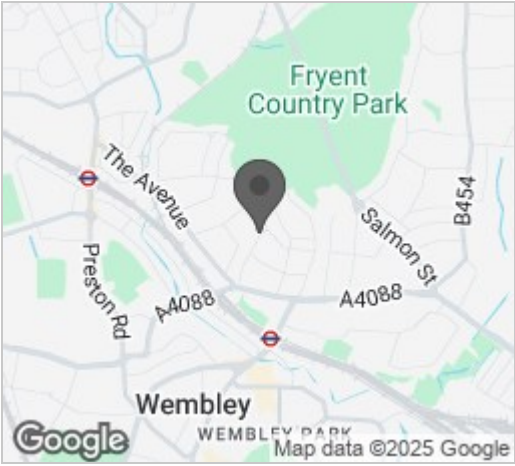
£1,100,000

- SPACIOUS FIVE BEDROOM DETACHED HOUSE
- THREE RECEPTION ROOMS
- TWO BATHROOMS
- VERSATILE LIVING ACCOMODATION THROUGHOUT
- LARGE FITTED KITCHEN
- OFF STREET PARKING
- PRIVATE REAR GARDEN
- SOUGHT AFTER WEMBLEY PARK LOCATION
- CLOSE TO THE FRENCH INTERNATIONAL LYCEE' & FRYENT COUNTRY PARK

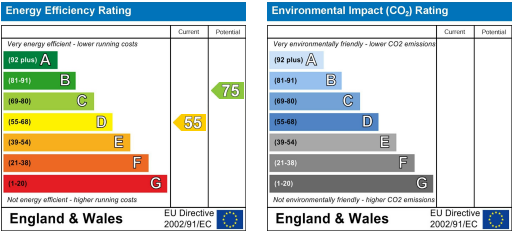
Floor Plan



Area Map



Energy Efficiency Graph



These particulars, whilst believed to be accurate are set out as a general outline only for guidance and do not constitute any part of an offer or contract. Intending purchasers should not rely on them as statements of representation of fact, but must satisfy themselves by inspection or otherwise as to their accuracy. No person in this firms employment has the authority to make or give any representation or warranty in respect of the property.