



22 Queens Walk, London, NW9 8ER

A TRULY MAGNIFICENT FIVE BEDROOM, THREE BATHROOM, TRIPLE FRONTED FAMILY HOME We are absolutely delighted to bring to the market this stunning property located on one of the finest roads in the entire area and within close proximity to the French International Lycee' along with Fryent Country Park, offering you easy access to enjoy open spaces for children to play, along with quiet tranquil woodland walks and stunning panoramic views. Unique properties of this nature rarely become available, so an early viewing is strongly advised to avoid disappointment.

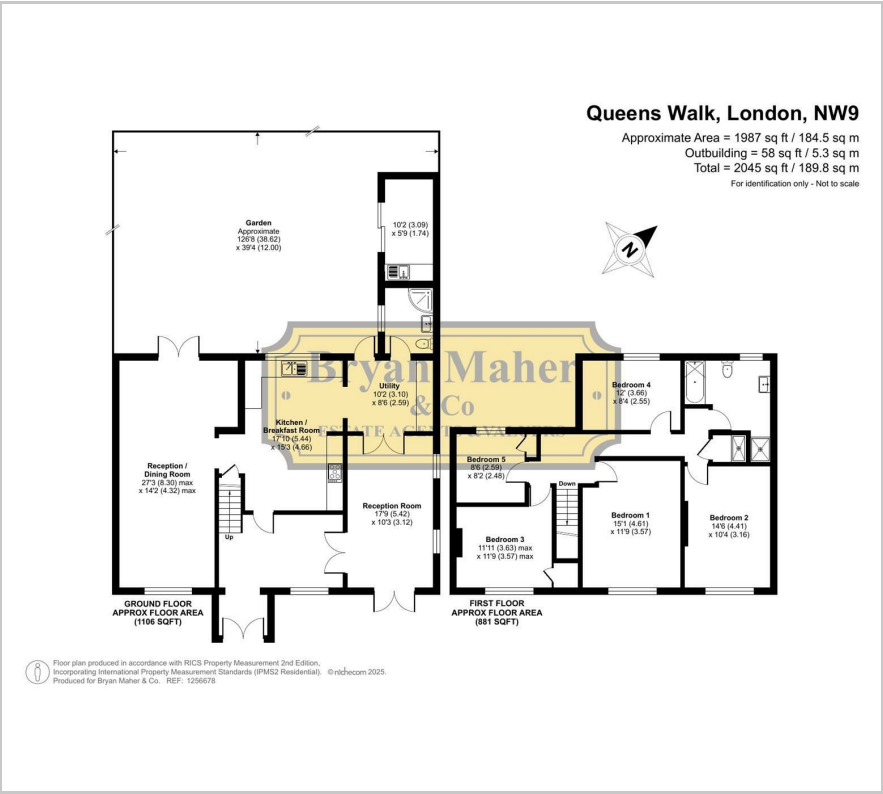
Internally, the property briefly comprises of an enclosed porch leading to a large inner hallway, a beautiful kitchen/dining room, a large separate utility area, a through lounge, an additional reception room, a downstairs shower room, five first floor bedrooms with a family bathroom and a separate shower room.

Externally, the front drive provides ample off street parking and there is a huge garden to the rear.

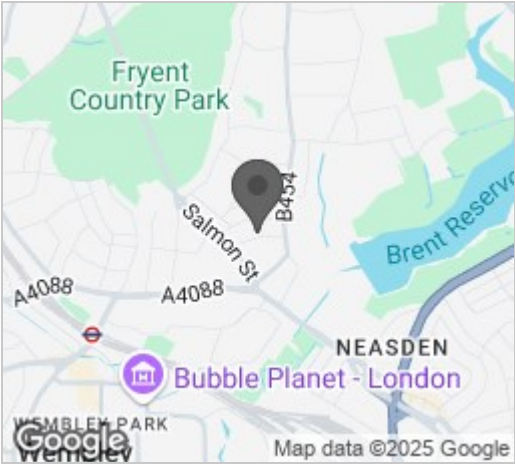
£999,950

- MAGNIFICENT FIVE BEDROOM FAMILY HOME
- THREE BATHROOMS
- BEAUTIFUL KITCHEN / DINING ROOM
- LARGE SEPARATE UTILITY ROOM
- SPACIOUS THROUGH LOUNGE
- ADDITIONAL RECEPTION ROOM
- HUGE REAR GARDEN
- AMPLE OFF STREET PARKING
- HIGHLY SOUGHT AFTER LOCATION
- WALKING DISTANCE TO THE FRENCH INTERNATIONAL LYCEE'

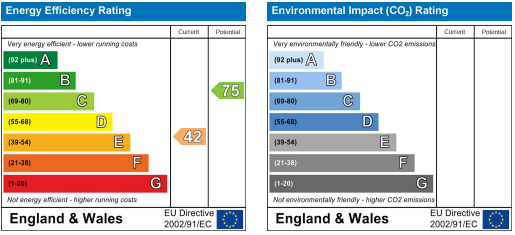
Floor Plan



Area Map



Energy Efficiency Graph



These particulars, whilst believed to be accurate are set out as a general outline only for guidance and do not constitute any part of an offer or contract. Intending purchasers should not rely on them as statements of representation of fact, but must satisfy themselves by inspection or otherwise as to their accuracy. No person in this firms employment has the authority to make or give any representation or warranty in respect of the property.