



1 Keysham Court, Preston Road, WEMBLEY, Middlesex, HA9 8LD

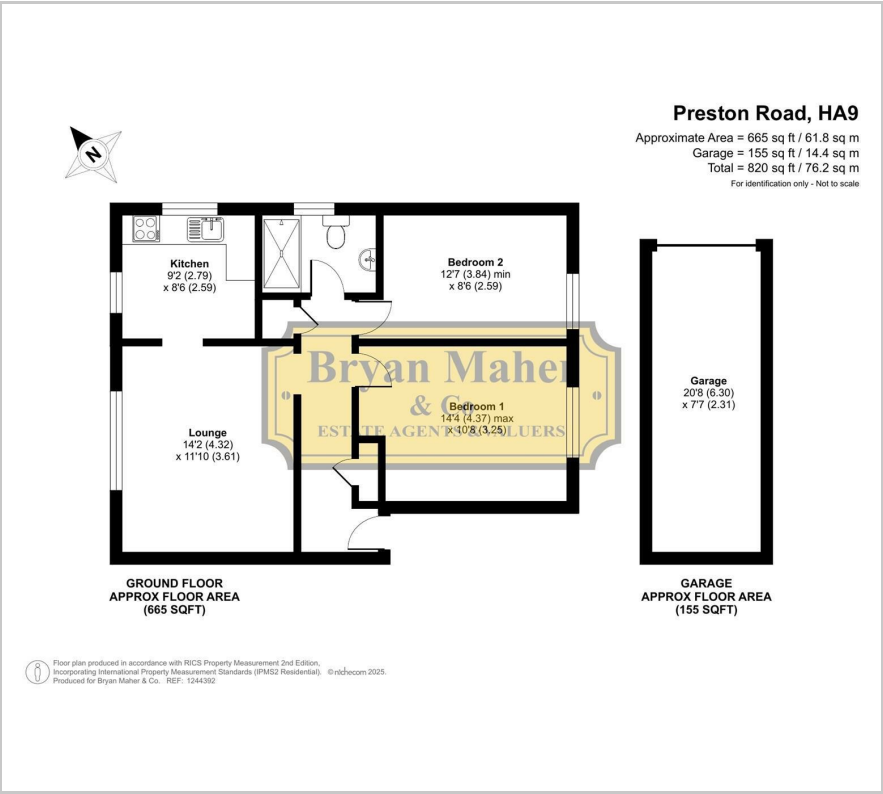
A TWO BEDROOM GROUND FLOOR FLAT WITH SHARE OF FREEHOLD & A GARAGE We are delighted to bring to the market this spacious two bedroom flat ideally located for Preston Road Metropolitan line tube station offering fast access into London and the surrounding areas. The property is being sold with no onward chain and benefits from owning a share of the freehold.

The property briefly comprises of a welcoming entrance hall, a large lounge, a fitted kitchen, two bedrooms and a modern shower room. Further benefits include private off street parking and a garage.

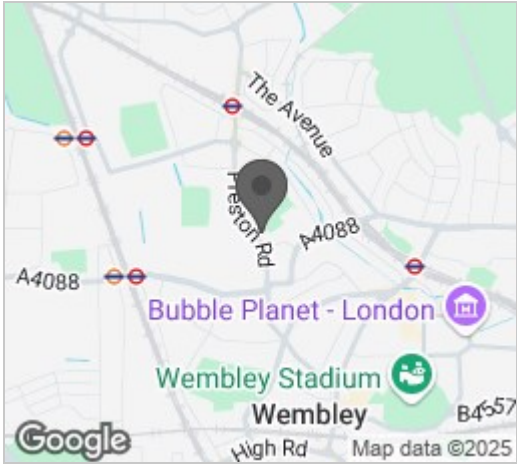
- TWO BEDROOMS
- GROUND FLOOR FLAT
- SHARE OF FREEHOLD WITH 999 YEARS LEASE
- GAS CENTRAL HEATING
- DOUBLE GLAZING
- PRIVATE PARKING AND A GARAGE IN A BLOCK
- WALKING DISTANCE TO PRESTON RD METROPOLITAN LINE TUBE STATION
- CHAIN FREE SALE
- PERFECT FIRST TIME PURCHASE
- IDEAL BUY TO LET INVESTMENT

£369,950

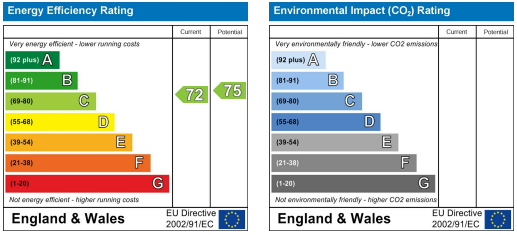
Floor Plan



Area Map



Energy Efficiency Graph



These particulars, whilst believed to be accurate are set out as a general outline only for guidance and do not constitute any part of an offer or contract. Intending purchasers should not rely on them as statements of representation of fact, but must satisfy themselves by inspection or otherwise as to their accuracy. No person in this firms employment has the authority to make or give any representation or warranty in respect of the property.