



142 Draycott Avenue, Harrow, Middlesex, HA3 0BZ

A FIVE BEDROOM, SEMI DETACHED FAMILY HOME CLOSE TO MOUNT STEWART SCHOOL
 We are delighted to bring to the market this spacious five bedroom property which is being sold with no onward chain.

Internally, the property briefly comprises of a welcoming entrance hall, a fitted kitchen, two interconnecting reception rooms, three first floor bedrooms, a shower room with a separate WC and two additional bedrooms within the loft.

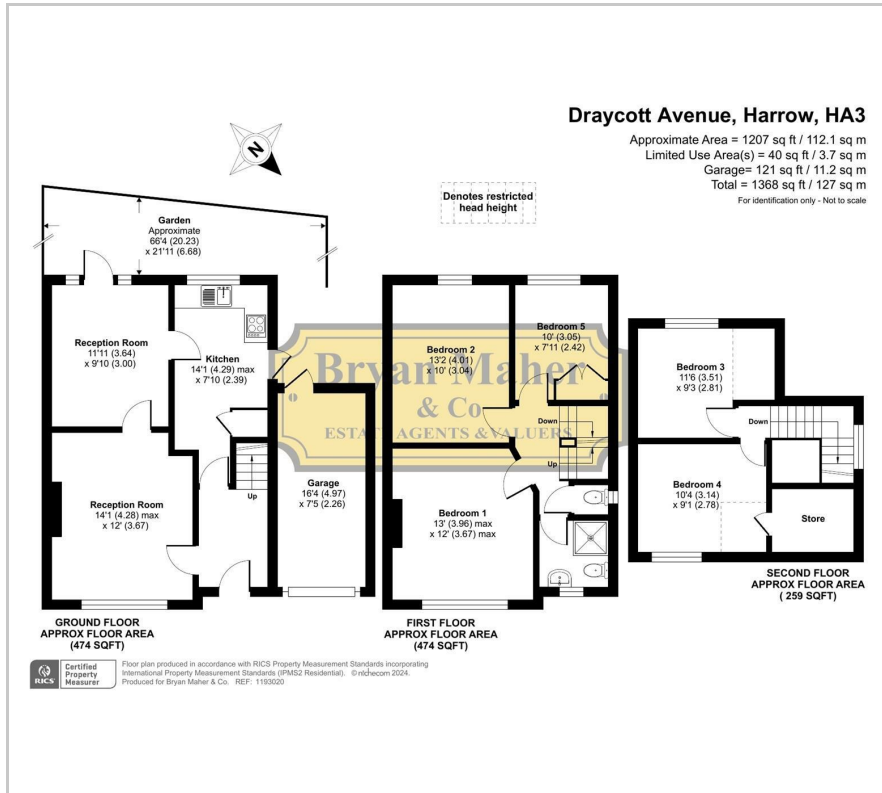
Externally the front driveway provides off street parking and leads to a garage to the side which offers scope for a side extension subject to the usual consents being obtained. To the rear is a large, well maintained garden which could also be extended into to create additional living space.

The property would benefit from modernisation and offers the perfect opportunity for a discerning buyer hoping to modernise, extend and add significant value to their next home.

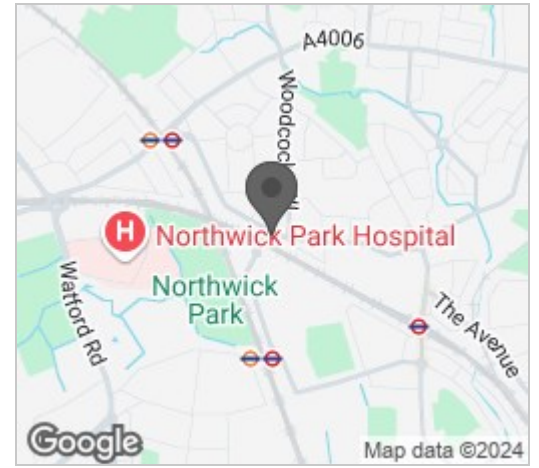
£749,950

- FIVE BEDROOMS
- SEMI DETACHED PROPERTY
- TWO RECEPTION ROOMS
- GOOD SIZE FITTED KITCHEN
- REQUIRES SOME COSMETIC REFURBISHMENT
- LARGE REAR GARDEN
- SCOPE FOR SIDE & REAR EXTENSIONS STPP
- GARAGE VIA YOUR OWN DRIVEWAY
- MOUNT STEWART SCHOOL CATCHMENT
- CHAIN FREE SALE

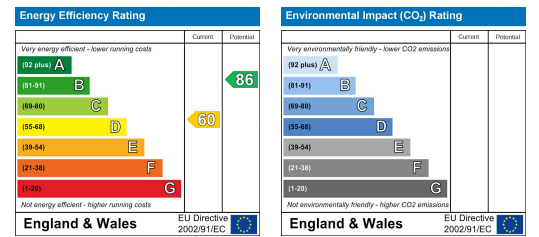
Floor Plan



Area Map



Energy Efficiency Graph



These particulars, whilst believed to be accurate are set out as a general outline only for guidance and do not constitute any part of an offer or contract. Intending purchasers should not rely on them as statements of representation of fact, but must satisfy themselves by inspection or otherwise as to their accuracy. No person in this firm's employment has the authority to make or give any representation or warranty in respect of the property.