



## 30 Park Lane

, Wembley, HA9 7RZ

**£2,000**

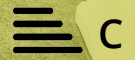
**\*\*A BRAND NEW TWO BEDROOM LUXURY APARTMENT ON PARK LANE, WEMBLEY PARK\*\*** This high end apartment is one of six in this new development and located on the top floor with two excellent size bedrooms, a modern shower room, lounge, a fully fitted kitchen/diner, bicycle rack, allocated parking space and all just moments away from the popular London Designer Outlet which has access to an array of restaurants and shops such as Sainsburys, Amazon Groceries, a fitness gym all within walking distance.

Wembley Park is strategically placed for a quick and easy commute into the city with Wembley Park station and Wembley Central station just a short walk away. Catch a Metropolitan line train to the city with a 13 minute ride to Baker Street, 21 minutes to Kings Cross and 29 minutes to Liverpool Street! There are also fast bus routes, numerous motorways and Heathrow airport close by, making Wembley one of the best connected areas of North West London.

- BRAND NEW
- DEVELOPMENT OF SIX APARTMENTS
- TWO BEDROOMS
- KITCHEN/DINER
- MODERN BATHROOM
- TOP FLOOR
- WEMBLEY PARK
- AVAILABLE NOW

### Viewing

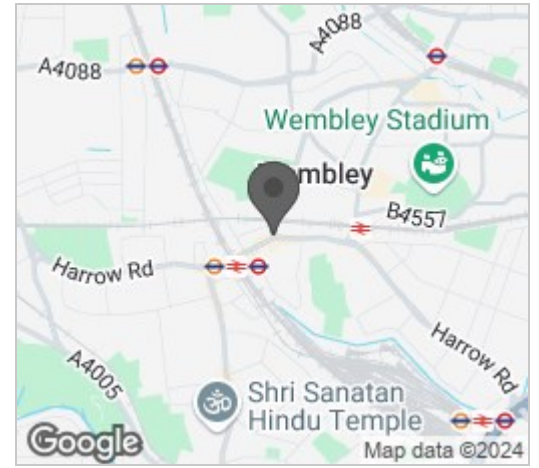
Please contact our Bryan Maher & Co Office on 020 8904 8904 if you wish to arrange a viewing appointment for this property or require further information.



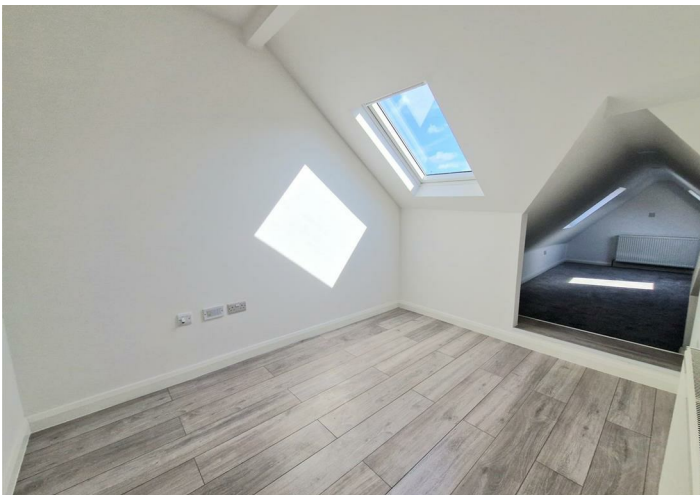
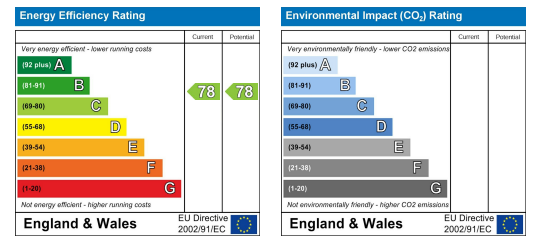
# Floor Plan



# Area Map



# Energy Efficiency Graph



These particulars, whilst believed to be accurate are set out as a general outline only for guidance and do not constitute any part of an offer or contract. Intending purchasers should not rely on them as statements of representation of fact, but must satisfy themselves by inspection or otherwise as to their accuracy. No person in this firm's employment has the authority to make or give any representation or warranty in respect of the property.

