



**flat 3 2 Abbotsbury**  
 Ambleside Road, London, NW10 3UJ  
**£339,950**

CHAIN FREE TWO BEDROOM FIRST FLOOR FLAT WITH A LONG LEASE. We are delighted to offer for sale this large redecorated two bedroom first floor flat which is one of four in the block on Ambleside Road which is a popular street located near to Roundwood Park and close to nearby shops, cafes, and restaurants in both Harlesden and Willesden. Transport links include Dollis Hill (Jubilee) and Harlesden (Bakerloo & Overground).

- TWO BEDROOMS
- FIRST FLOOR
- RECENTLY DECORATED
- LONG LEASE
- CHAIN FREE
- NEAR TO ROUNDWOOD PARK
- DOUBLE GLAZING
- GAS HEATING

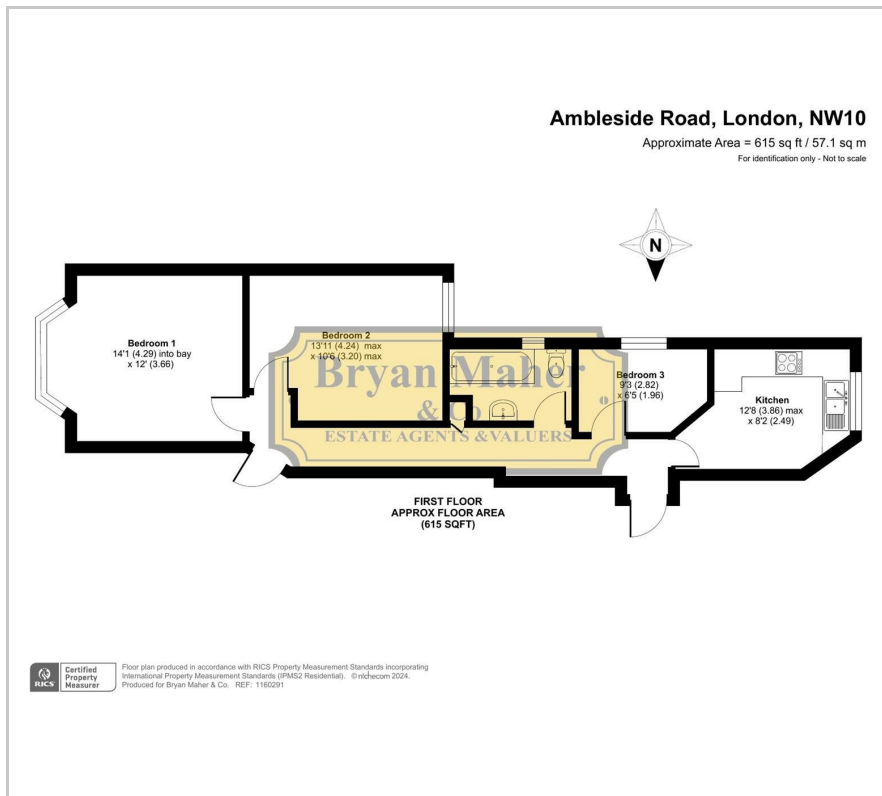
**Viewing**

Please contact our Bryan Maher & Co Office on 020 8904 8904 if you wish to arrange a viewing appointment for this property or require further information.

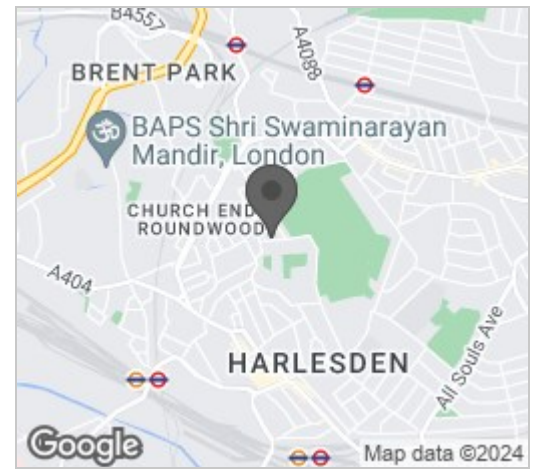




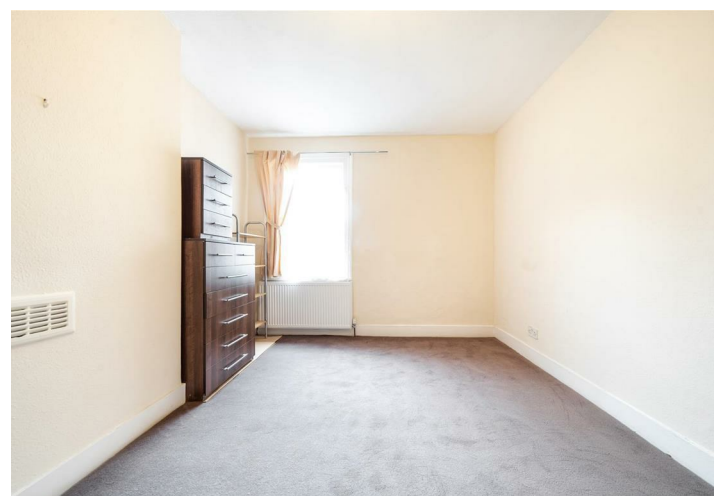
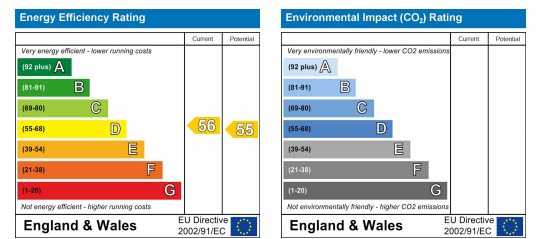
# Floor Plan



# Area Map



# Energy Efficiency Graph



These particulars, whilst believed to be accurate are set out as a general outline only for guidance and do not constitute any part of an offer or contract. Intending purchasers should not rely on them as statements of representation of fact, but must satisfy themselves by inspection or otherwise as to their accuracy. No person in this firm's employment has the authority to make or give any representation or warranty in respect of the property.

