



37 Wigginton Avenue

, Wembley, HA9 6EZ

£3,750 (From) PCM

****LUXURY FIVE BEDROOM TWO BATHROOM PROPERTY TO RENT IN THE HEART OF WEMBLEY**** Located on a quiet residential road near to excellent transport links which include the Bakerloo Line, A406 North Circular Road and the M40 motorway. This property has been refurbished to a high standard and enjoys a large rear garden with off road parking for numerous vehicles to the front. Call now to arrange an early inspection so not to miss out on this fantastic property.

- SEMI DETACHED HOUSE
- FIVE BEDROOMS
- L SHAPE RECEPTION ROOM
- TWO BATHROOMS
- LARGE REAR GARDEN
- OFF ROAD PARKING
- HIGH SPEC
- AVAILABLE NOW

Viewing

Please contact our Bryan Maher & Co Office on 020 8904 8904 if you wish to arrange a viewing appointment for this property or require further information.



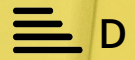
5



2



2



D

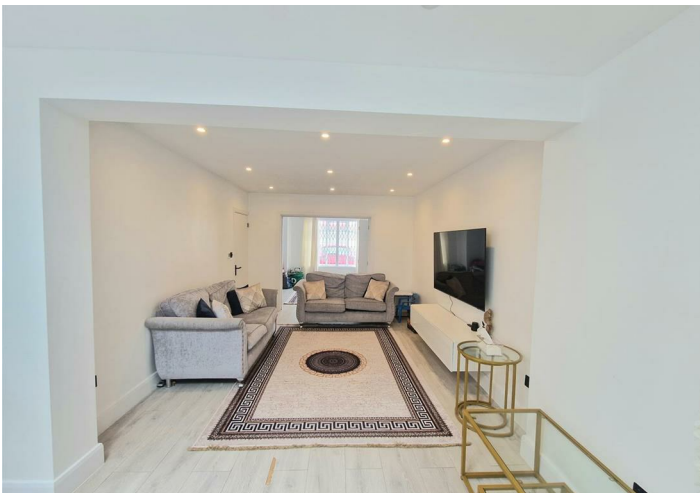
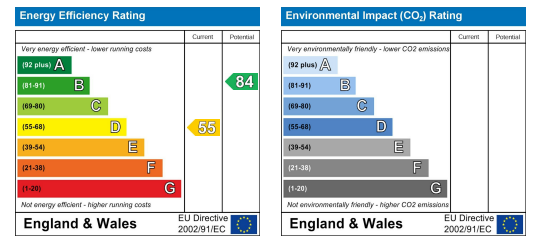
Floor Plan



Area Map



Energy Efficiency Graph



These particulars, whilst believed to be accurate are set out as a general outline only for guidance and do not constitute any part of an offer or contract. Intending purchasers should not rely on them as statements of representation of fact, but must satisfy themselves by inspection or otherwise as to their accuracy. No person in this firm's employment has the authority to make or give any representation or warranty in respect of the property.

