



2 Shakespeare Court

, KENTON, HA3 9TR

£1,500 Per Month

ONE BEDROOM BUNGALOW. A spacious and bright bungalow located in a quiet Cul De Sac in Shakespeare Close. Internally the property benefits from a good size bedroom, fitted kitchen, living room which leads to its own private rear garden with a large storage shed. Further benefits include double glazing, gas central heating and carpets throughout. The property is located between Preston Road and Kingsbury Stations and is offered part furnished. Ideal for a professional couple. A MUST SEE PROPERTY.

- BUNGALOW
- ONE BEDROOM
- DOUBLE GLAZED THROUGHOUT
- NEWLY CARPETED
- NEWLY PAINTED
- REAR GARDEN
- LARGE SHED
- AVAILABLE NOW

Viewing

Please contact our Bryan Maher & Co Office on 020 8904 8904 if you wish to arrange a viewing appointment for this property or require further information.



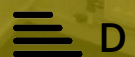
1



1

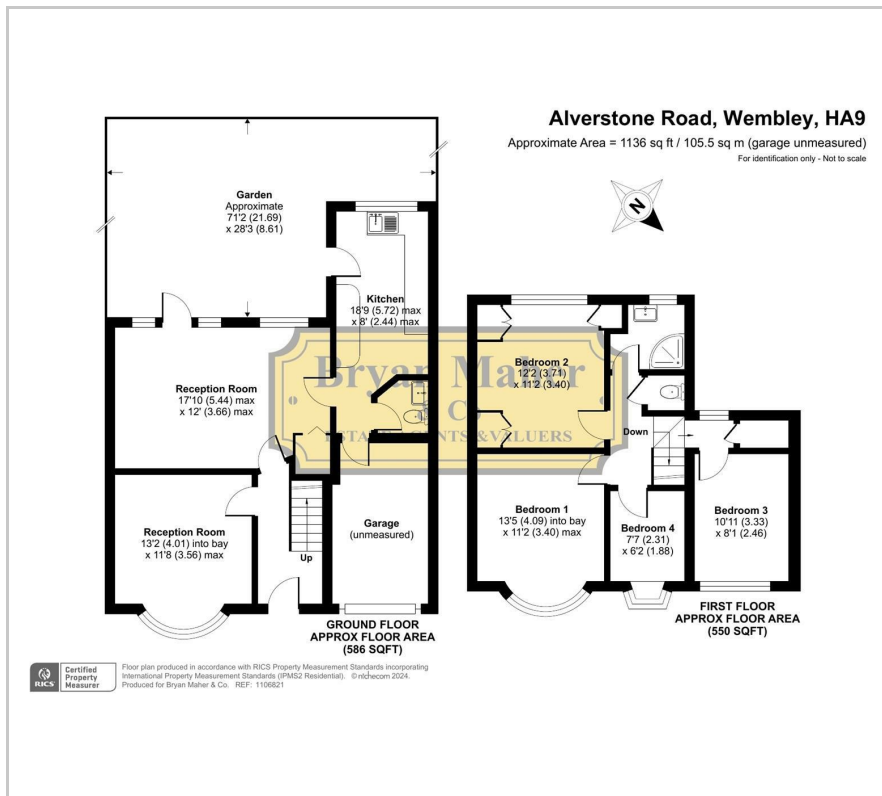


1

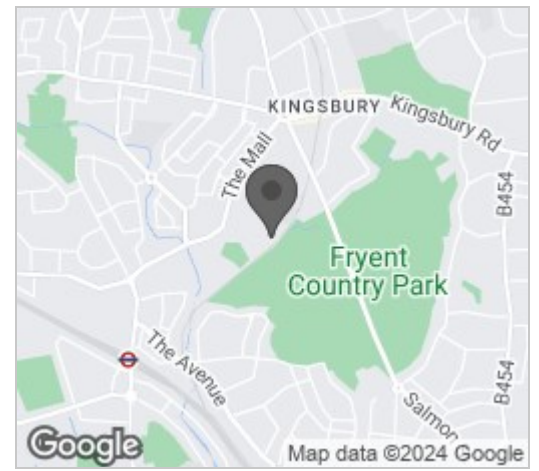


D

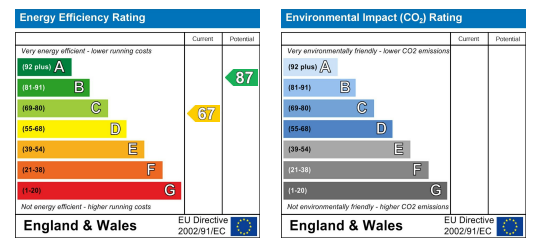
Floor Plan



Area Map



Energy Efficiency Graph



These particulars, whilst believed to be accurate are set out as a general outline only for guidance and do not constitute any part of an offer or contract. Intending purchasers should not rely on them as statements of representation of fact, but must satisfy themselves by inspection or otherwise as to their accuracy. No person in this firm's employment has the authority to make or give any representation or warranty in respect of the property.

