



**7**  
**Barham Court, Barham Close, Wembley, HA0 2EB**  
**£875 (From) PCM**

**\*\*DOUBLE ROOM INCLUSIVE OF ALL BILLS\*\*** Spacious double room available for a single person or couple only with use of a shared kitchen and bathroom.. A well-presented triple aspect apartment situated on the second floor of a property less than 1 minute from Sudbury Town Station. A stones throw from the historic Barham Park and library. Excellent transport links to Wembley, Harrow and the City. Distinguishing features include a bright south-facing bedroom, well-insulated warm property, easy-clean tiled floors, impressive shower pressure following recent renovation, serviced external communal areas of property and free parking. **AVAILABLE NOW.**

- SINGLE ROOM
- SUDBURY TOWN
- BILLS INCLUSIVE
- PICCADILLY LINE
- SHARED KITCHEN
- SHARED BATHROOM
- AVAILABLE NOW

**Viewing**

Please contact our Bryan Maher & Co Office on 020 8904 8904 if you wish to arrange a viewing appointment for this property or require further information.



1



1



0





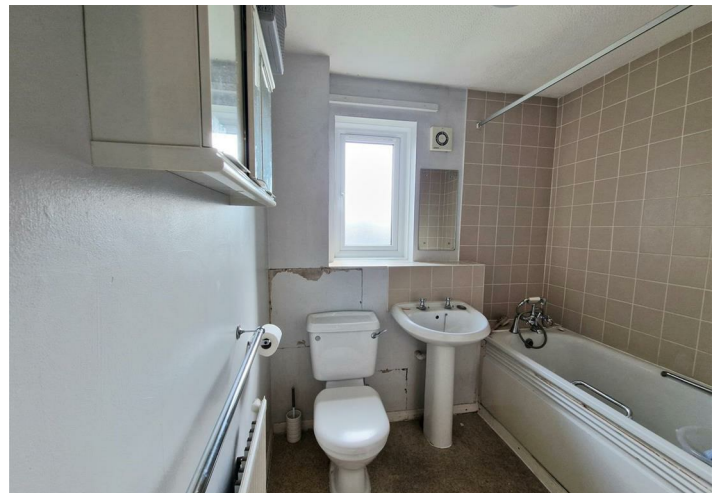
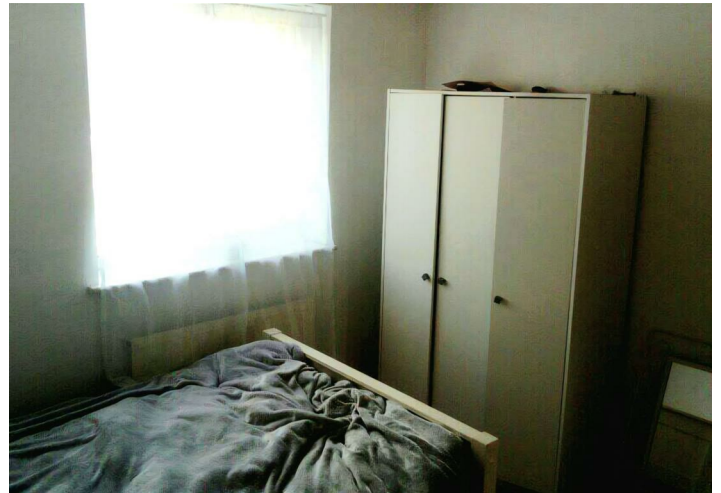
## Floor Plan



## Area Map



## Energy Efficiency Graph



These particulars, whilst believed to be accurate are set out as a general outline only for guidance and do not constitute any part of an offer or contract. Intending purchasers should not rely on them as statements of representation of fact, but must satisfy themselves by inspection or otherwise as to their accuracy. No person in this firm's employment has the authority to make or give any representation or warranty in respect of the property.