



17 Kingsway, WEMBLEY, Middlesex, HA9 7QP

A MAGNIFICENT PURPOSE BUILT FOUR BEDROOM, THREE RECEPTION FAMILY HOME We are delighted to have been favoured with instructions to bring to the market this superb semi detached property which is being sold with no onward chain. The property offers an abundance of potential benefitting from a wide side plot which could be significantly extended subject to the usual consents being obtained.

Internally the property briefly comprises of a large welcoming entrance hallway, a front reception room, a rear reception room, a separate dining room which leads through to a fitted kitchen, four first floor bedrooms and a large shower room.

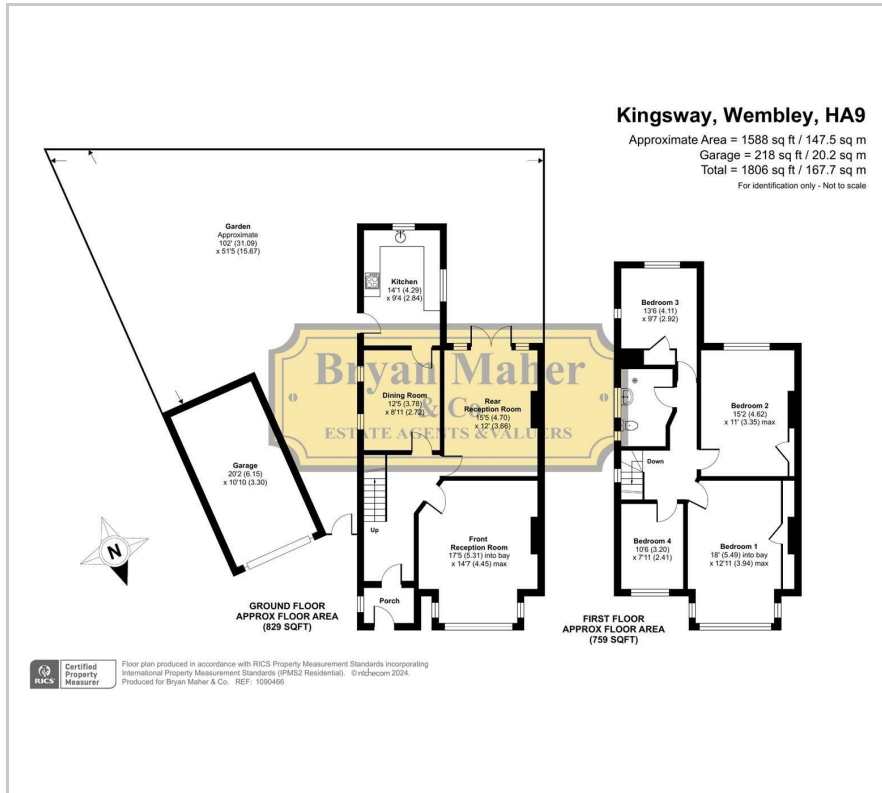
Externally you will benefit from off street parking to the front which leads to the garage on the side and a vast rear garden measuring circa 100ft.

We strongly anticipate huge demand for this superb family home so an early viewing is strongly advised to avoid disappointment.

£785,000

- MAGNIFICENT FOUR BEDROOM FAMILY HOME
- LARGER STYLE SEMI DETACHED
- THREE RECEPTION ROOMS
- AMAZING EXTENSION POTENTIAL STPP
- LARGE WELCOMING ENTRANCE HALL
- GAS CENTRAL HEATING
- OFF STREET PARKING LEADING TO THE GARAGE
- HUGE REAR GARDEN
- HIGHLY SOUGHT AFTER LOCATION
- CHAIN FREE SALE

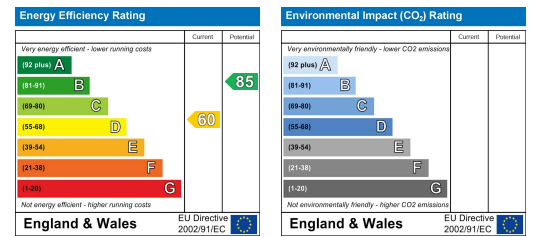
Floor Plan



Area Map



Energy Efficiency Graph



These particulars, whilst believed to be accurate are set out as a general outline only for guidance and do not constitute any part of an offer or contract. Intending purchasers should not rely on them as statements of representation of fact, but must satisfy themselves by inspection or otherwise as to their accuracy. No person in this firm's employment has the authority to make or give any representation or warranty in respect of the property.