



18 St. Marys Road, London NW11, NW11 9UG

* A DECEPTIVELY SPACIOUS SIX BEDROOM, THREE BATHROOM FAMILY HOME* We are delighted to bring to the market this superb property located just minutes walk from Brent Cross tube station offering excellent links throughout London & the surrounding areas.

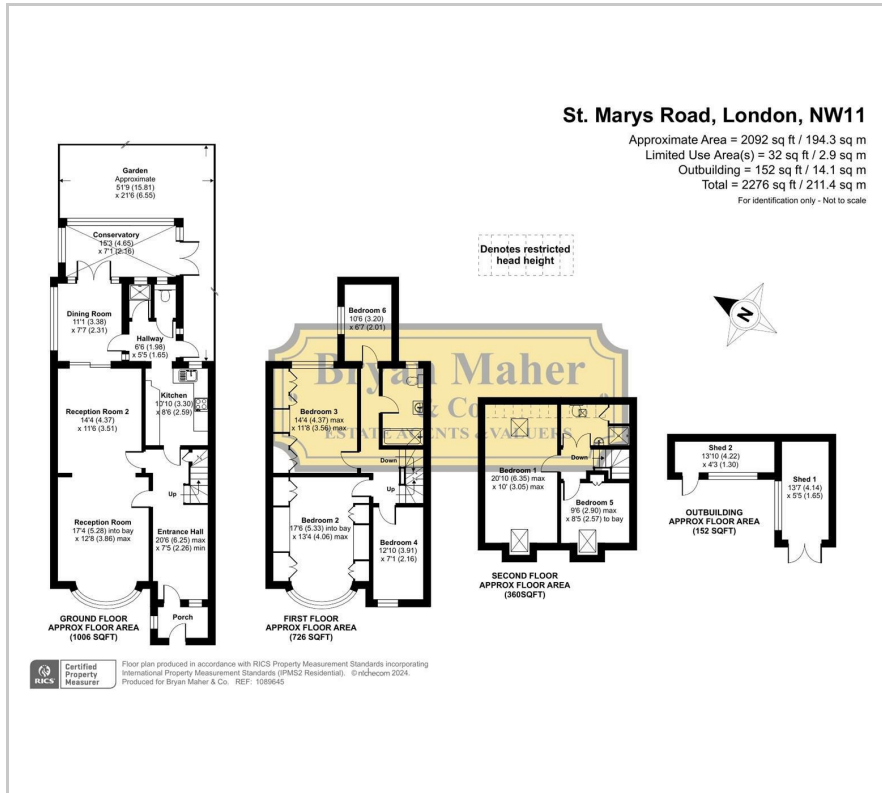
The property briefly comprises of a large welcoming entrance hall, a fitted kitchen, a through lounge, a downstairs shower & W/C, a rear lean too extension, four first floor bedrooms with a modern family bathroom and a huge loft conversion to create two further double bedrooms and an additional shower room. The rear garden is easy to maintain and offers ample storage units.

The property is perfectly positioned to benefit from all of the amenities Golders Green has to offer and we strongly advise an internal inspection to fully appreciate the size & scale being offered.

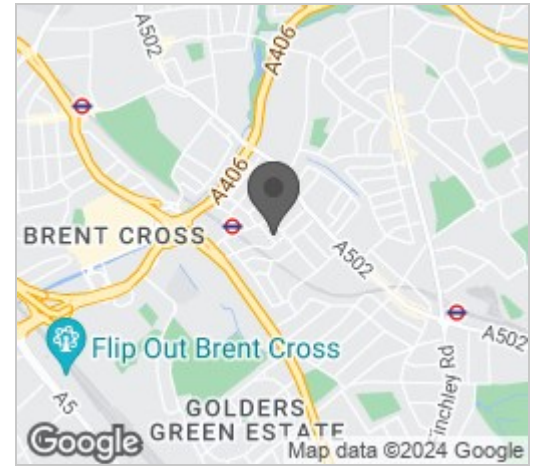
£1,100,000

- SIX BEDROOM PROPERTY
- THREE BATHROOMS
- DECEPTIVELY SPACIOUS FAMILY HOME
- MEASURING IN EXCESS OF 2000sqft
- ENCLOSED SECURITY PORCH
- LARGE THROUGH LOUNGE
- EXTENDED TO THE REAR & LOFT
- HIGHLY SOUGHT AFTER LOCATION
- MINUTES WALK TO BRENT CROSS TUBE
- INTERNAL INSPECTION IS STRONGLY ADVISED

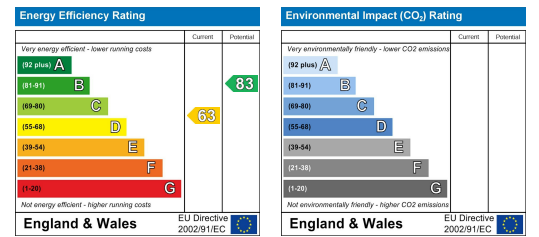
Floor Plan



Area Map



Energy Efficiency Graph



These particulars, whilst believed to be accurate are set out as a general outline only for guidance and do not constitute any part of an offer or contract. Intending purchasers should not rely on them as statements of representation of fact, but must satisfy themselves by inspection or otherwise as to their accuracy. No person in this firm's employment has the authority to make or give any representation or warranty in respect of the property.