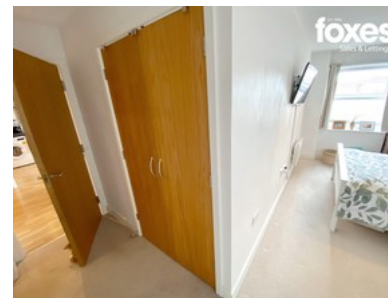


Commercial Road Bournemouth



- 📍 Town Centre Landmark Development
- 📍 Two Double Bedrooms
- 📍 En Suite
- 📍 Open Plan Lounge/diner/kitchen
- 📍 Secure Allocated Parking
- 📍 Beaches, Cinemas, Shops, Bars & Restaurants
- 📍 25% SHARED OWNERSHIP
- 📍 EPC: C



Bedroom 🛏 2 Bathroom 🚿 2 Reception 🪑 1

£57,500