



RUSSELL KILLNER
ESTATE AGENTS



Plot 95, 158 St. Crispin Drive, , Northampton NN5 4HP

Location & Development:

St Crispins - A selection of two, three and four bedroom homes along with an array of one and two bedroom apartments set in an idyllic location steeped in history. Over the next four years we will be creating a new place for people to call home, with a harmonious blend of modern living and beautiful surroundings.

Be part of the unique and exclusive lifestyle that St Crispins has to offer, a short drive away you will find yourself at Northampton Train Station taking you to many destinations across the country. Furthermore in a little less time you could find yourself slipping onto the M1 motorway connecting you to London in the south or going north to the midlands.

£298,000*

- Summer completion with a builders warranty & set over 1,200 sqft
- Brand new three bedroom end of terrace home
- Modern kitchen boasting integrated appliances
- Spacious lounge with sliding doors leading to the rear garden
- Generously sized master bedroom featuring an en suite
- Two allocated parking spaces situated in a gated parking area
- West facing rear garden with a patio area perfect for entertaining
- Predicted EPC rating B & Solar panels
- Surrounded by local amenities & great road links to the M1
- Short distance to Northampton train station & and town centre

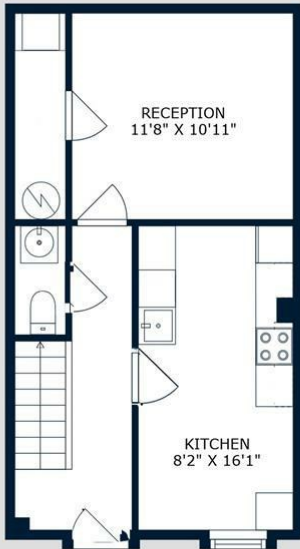
0333 210 0179

| info@rkestateagents.uk

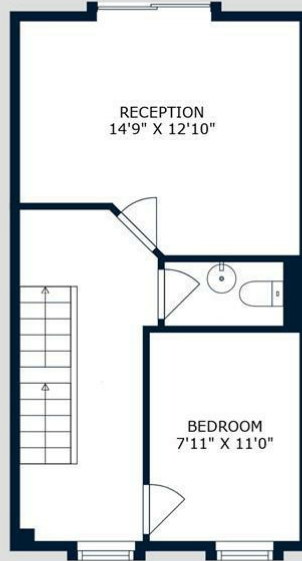
| www.rkestateagents.uk

St Crispin Drive, Northampton

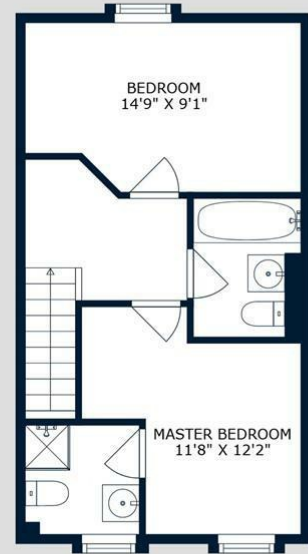
Approximate Area - 1213 sq.ft



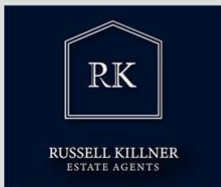
FLOOR 1



FLOOR 2



FLOOR 3



GROSS INTERNAL AREA
 Below Ground: 405 sq. ft, FLOOR 2: 405 sq. ft, FLOOR 3: 403 sq. ft
 TOTAL: 1213 sq. ft

ALL FLOOR PLANS PRODUCED WITHIN ACCORDANCE OF RICS GUIDELINES. PRODUCED BY RK.E.A.

