

110 Wigmore Street, London, W1U 3RW



Refurbished Offices North of Oxford Street - 1,921 - 3,842 sq ft

OFFICE

London | Consultancy | Transactions | Independent | Experienced



Location

110 Wigmore Street is situated on the north side at the junction with Duke Street. The building is a moment's walk from Selfridges and the world renowned shopping on Oxford Street and Bond Street. The area is well served by an extensive variety of cafés, bars and restaurants including the vibrant Marylebone High Street and St Christopher's Place.

Description

The newly refurbished office floors provide open plan accommodation benefitting from no columns and excellent natural light on two elevations.

Specification

- Newly refurbished
- Air conditioning
- Fully accessible raised floors
- New metal tile ceiling with LED lighting throughout
- Commissionaire
- Automatic passenger lift
- 24 hour access
- Superb natural light

Lease

A new lease is available directly from the Landlord.

Rent, Rates & Service Charge

Rent:	POA
Business Rates:	£36.25 per sq ft
Service Charge:	£15.10 per sq ft

Accommodation (NIA)

The available space is located over 1st and 2nd floors as follows:

Description	sq ft	sq m
2nd Floor	1,921	178.45
1st Floor	1,921	178.45
Total	3,842	356.9

MISREPRESENTATION ACT 1967 - Levy Real Estate LLP for themselves and for the Vendors or lessors of this property whose agents they are given notice that: All description, dimensions, reference to condition and necessary permissions for use and occupation and other details are given without responsibility and any intending purchasers or tenants should not rely on them as statements or representations of fact but must satisfy themselves by inspection or otherwise as to the correctness of each of them. Any services mentioned have not been tested and therefore prospective occupiers should satisfy themselves as to their operation. These particulars are produced in good faith and set out a general guide only and do not constitute part of any offer or contract. No person in the employment of Levy Real Estate LLP has any authority to make or give representation or warranty in relation to this property. All prices and rents are quoted exclusive of VAT unless otherwise stated. January 2023

Levy Real Estate LLP
Heddon House, 149-151 Regent
Street, London, W1B 4JD

T +44 20 7930 1070
E info@levyrealstate.co.uk

www.levyrealstate.co.uk



**110 Wigmore Street,
London, W1U 3RW**



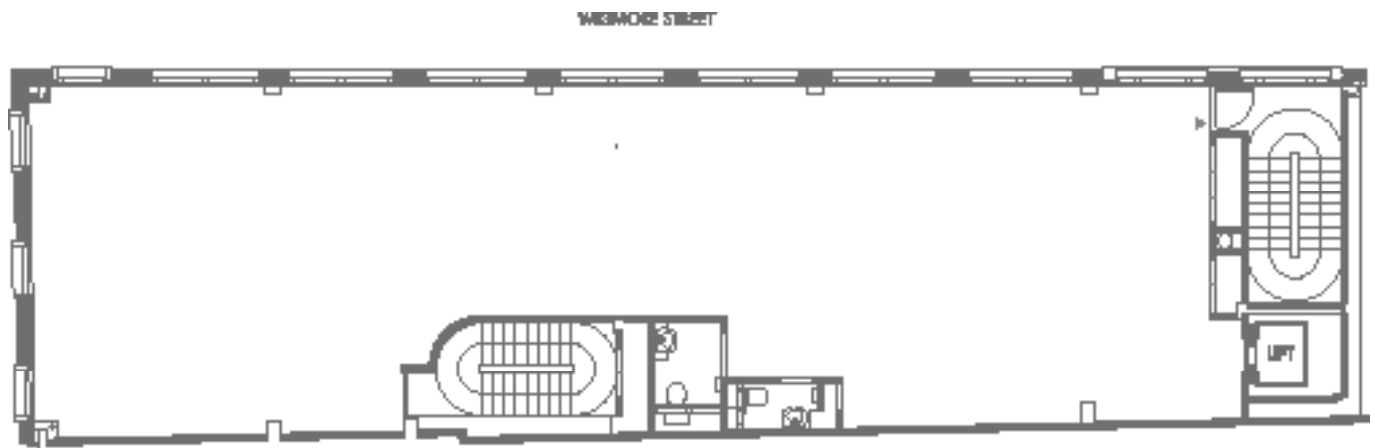
Refurbished Offices North of Oxford Street - 1,921 - 3,842 sq ft

OFFICE

London | Consultancy | Transactions | Independent | Experienced

Floor Plan

Not to scale, indicative only.



Interior Images

Prior to refurbishment



Further Information

For further information, or to arrange an inspection please contact:

Simon Tann

T 0207 747 0141

E simon.tann@levyrealestate.co.uk

Megan Carr

T: 0207 747 0143

E: megan.carr@levyrealestate.co.uk

MISREPRESENTATION ACT 1967 - Levy Real Estate LLP for themselves and for the Vendors or lessors of this property whose agents they are given notice that: All description, dimensions, reference to condition and necessary permissions for use and occupation and other details are given without responsibility and any intending purchasers or tenants should not rely on them as statements or representations of fact but must satisfy themselves by inspection or otherwise as to the correctness of each of them. Any services mentioned have not been tested and therefore prospective occupiers should satisfy themselves as to their operation. These particulars are produced in good faith and set out a general guide only and do not constitute part of any offer or contract. No person in the employment of Levy Real Estate LLP has any authority to make or give representation or warranty in relation to this property. All prices and rents are quoted exclusive of VAT unless otherwise stated. January 2023

Levy Real Estate LLP
Heddon House, 149-151 Regent
Street, London, W1B 4JD

T +44 20 7930 1070

E info@levyrealestate.co.uk

www.levyrealestate.co.uk

