



54a Bucknell Road, Bicester

Bicester



£1,450 pcm



## 54a Bucknell Road

Bicester

Council Tax band: B

Tenure: Freehold

EPC Energy Efficiency Rating: C

EPC Environmental Impact Rating: C

- Off-road parking
- Modern kitchen units
- Integrated oven
- Spacious living area with fireplace
- Ample natural light throughout
- Built-in storage
- Neutral bathroom with bath and shower
- Utility area
- Contemporary flooring





# 54a Bucknell Road

## Bicester

IMS are pleased to present a well-proportioned three bedroom flat conveniently located in Bicester, available now.

This spacious 2 story, three-bedroom flat offers contemporary living with a bright and airy atmosphere throughout. The property boasts a generous reception room featuring a central fireplace and large windows that flood the space with natural light. The modern kitchen is equipped with stylish wooden units, an integrated oven, and ample storage, enhanced by a spacious layout ideal for both cooking and entertaining. Residents benefit from a practical utility area with built-in storage solutions, while neutral decor and a mix of modern and wooden flooring contribute to a fresh and welcoming feel.

The flat includes three well-proportioned bedrooms, each with ample natural light and versatile neutral finishes, providing comfortable retreats for rest or work. The neutral bathroom is fitted with a bath with integrated shower, and a frosted window for privacy. Additional highlights include multiple off-road parking spaces for residents and guests, and thoughtful built-in storage throughout. With a combination of convenience, style, and practical features, this flat presents an ideal opportunity for those seeking a modern home with excellent amenities.

The property is within walking distance to the local town, train station and close to several schools, making it an ideal home for a family.

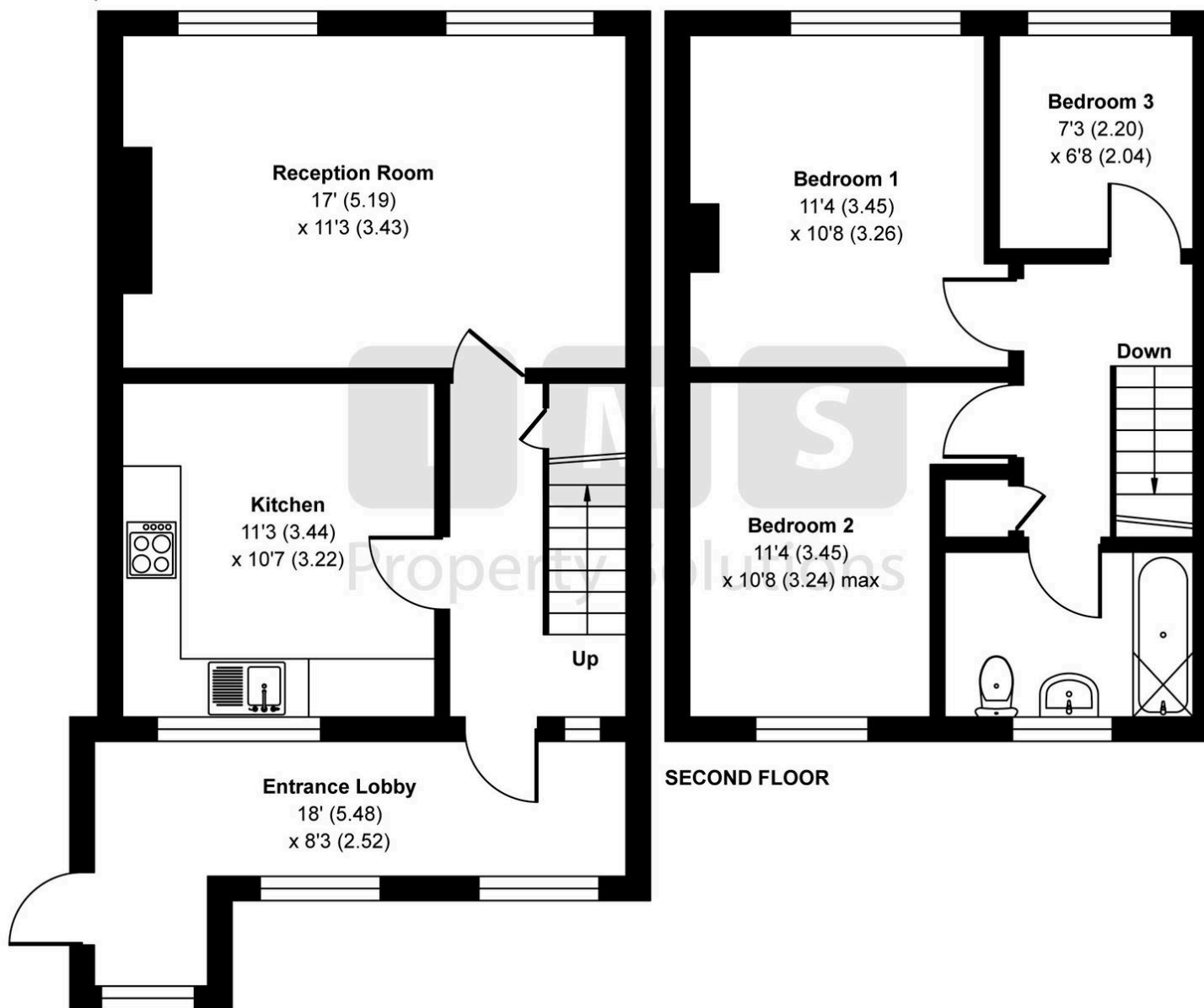




# Bucknell Road, Bicester, OX26

Approximate Area = 894 sq ft / 83 sq m

For identification only - Not to scale



## FIRST FLOOR



Floor plan produced in accordance with RICS Property Measurement 2nd Edition, Incorporating International Property Measurement Standards (IPMS2 Residential). © nichecom 2024. Produced for IMS Property Solutions. REF: 1354990