



THE DORCHESTER

5 BEDROOM DETACHED HOUSE

The Dorchester is a five bedroom detached family home with enviable modern living space and double garage.

This stunning home provides spacious accommodation for all of the family. The entrance hall is welcoming and leads to a cloakroom and lounge featuring bay window and further benefits from a gas fire and surround. A well equipped kitchen with integrated appliances looks stunning and offers an open plan design for informal dining and large family gatherings. French doors opening onto a patio area for outside entertaining. A utility room adds convenient space for laundry and a study is ideal for those who work from home.

Upstairs comprises five bedrooms with the master bedroom having en-suite facilities, with designer bathroom furniture, rain shower and full wall tiling. Bedrooms one and two also benefits from double fitted wardrobes. The family bathroom with bath and separate shower cubicle again features fitted furniture, full wall tiling and heated towel rail.

The Dorchester benefits from a double garage with electric door, block paved driveway and turf to front garden.

HOMES OF QUALITY & STYLE

Get in touch

Head Office: 01522 512200
Email: info@taylorlindseyhomes.co.uk
www.taylorlindseyhomes.co.uk

Features include:

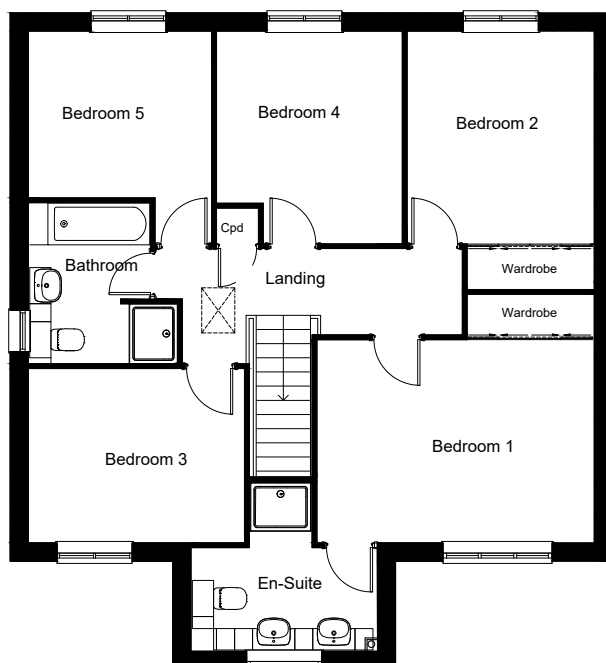
- Double Garage with Electric Door, Block Paved Driveway
- Designer Kitchen including Double Oven, Microwave, Induction Hob and Extractor, Integrated Fridge Freezer, Dishwasher and Wine Cooler
- Porcelanosa Tiling to Bathroom and En-suite Walls, Kitchen, Utility, Hall and Cloakroom Floor
- Roper Rhodes Fitted Bathroom Furniture
- Built in Wardrobes to Master Bedroom and Bedroom 2
- Grade A Condensing Boiler
- Alarm system & Security Lighting
- Gas Fire & Surround



GROUND FLOOR



FIRST FLOOR



HOMES OF QUALITY & STYLE

Get in touch

Head Office: 01522 512200
Email: info@taylorlindseyhomes.co.uk
www.taylorlindseyhomes.co.uk

THE DORCHESTER

5 Bedroom Detached | Double Garage
Kitchen | Dining | Utility
Lounge | Study | Master Ensuite

Ground Floor

Lounge	14'10" x 13'11" (15'10" into bay)	4.51m x 4.24m (4.83m into bay)
Kitchen/ Dining	30'8" x 13'4"	9.35m x 4.06m
Study	10'6" x 8'5"	3.19m x 2.58m
Utility	9'8" x 6'3"	2.94m x 1.90m

First Floor

Bedroom 1	15'1" x 11'0"	4.59m x 3.35m
En-suite	10'0" x 5'7"	3.05m x 1.70m
Bedroom 2	11'6" x 10'2"	3.51m x 3.08m
Bedroom 3	11'8" x 9'5"	3.57m x 2.88m
Bedroom 4	11'6" x 10'2"	3.51m x 3.09m
Bedroom 5	9'11" x 9'0"	3.03m x 2.76m
Bathroom	8'10" x 8'2"	2.68m x 2.49m

Illustrations and plans are indicative and for guidance only. Architectural details, materials and colours will change from plot to plot. Design changes may be made without prior notice. All dimensions shown on this brochure are approximate and intended for guidance only.

