



The
**Property
Selling**
company™

Tel 0800 111 4118

Email hello@thepropertysellingcompany.co.uk

Web www.thepropertysellingcompany.co.uk



100 Northfield Park, Soham, CB7 5XA **Offers over £242,500**

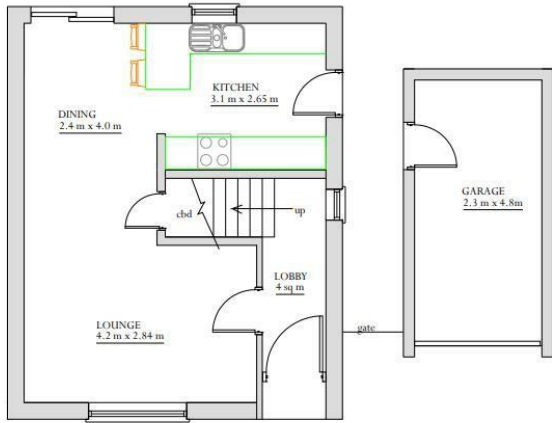
*** NEW PHOTOS TO COME NEXT WEEK ***

Welcome to this charming semi-detached house located in the desirable Northfield Park area of Soham. This property boasts a spacious 936 sq ft of living space, perfect for a growing family or those looking for a comfortable home.

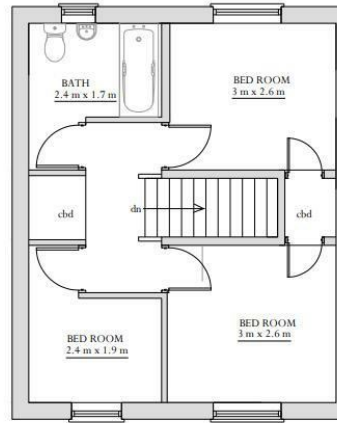
As you step inside, you are greeted by a cosy reception room, ideal for relaxing with family or entertaining guests. With three well-proportioned bedrooms, there is plenty of space for everyone to enjoy their own private sanctuary. The property also features a modern bathroom, adding convenience to your daily routine.

Built in 1984, this house combines the charm of a traditional home with the convenience of modern living. The layout is perfect for those seeking a comfortable and functional space to call their own.

Located in the heart of Soham, this property offers easy access to local amenities, schools, and green spaces, making it an ideal choice for families. Don't miss the opportunity to make this lovely house your new home in this sought-after neighbourhood.



GROUND FLOOR LAYOUT



FIRST FLOOR LAYOUT

- Freehold
- Chain free
- Vacant
- Garage
- Off street parking

