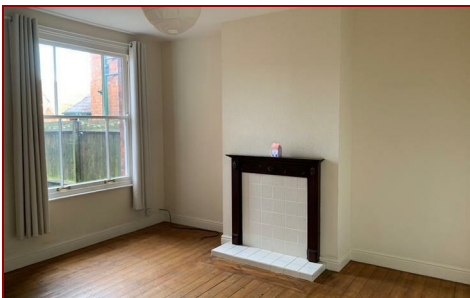


£995 PCM

Jayman
www.jayman.co.uk

Lettings & Property Management



Frog Lane, Staffordshire, WS13 6HS

£995 PCM

- Two Bedrooms
- Dining room
- Bathroom
- Parking for two cars
- EPC D
- Spacious living room
- Kitchen
- City Centre location
- Council Tax C
- Available June



Entrance

Hallway with stairs to first floor and doors to;

Front Reception Room

With wooden flooring and large sash window to fore.

Lounge 12'2" x 14'0"

With wooden flooring and large sash window to rear.
With door leading to kitchen.

Kitchen 14'9" x 7'10"

Spacious kitchen / diner with pantry, a range of storage cupboards, space for appliances. Includes cooker.

Master 11'1" x 14'5"

Double bedroom with window to fore.

Second 13'5" x 7'10"

Double bedroom with window to fore.

Bathroom

With suite comprising of bath with shower above, wc and wash hand basin.

To Rear

Private courtyard. Two parking spaces.

REQUIRE A MORTGAGE? Our independent advisor can compare "whole of market" to help find the best mortgage to suit your circumstances. Please call 01543 417 559 for a free mortgage quote including some deals only available through our network. **AGENTS DESCRIPTIONS** These details imply the opinion of the agent at the time these details were prepared and are subjective. It may be that the tenant's opinion may differ. **VIEWING ARRANGEMENTS** By appointment only with Jayman on 01543 417 559 **COUNCIL TAX** Please refer to www.voa.gov.uk for this information. **DESCRIPTIONS AND MEASUREMENTS** All measurements are approximate and some may be maximum on irregular walls. The plan shows the approximate layout of the rooms to show the inter relationship of relationship of one room to another but is not necessarily to scale. **CONSENTS** We have not had sight of any relevant building regulations, guarantees or planning consents and all relevant documentation pertaining to this property should be checked by your legal advisor before exchanging contracts.

