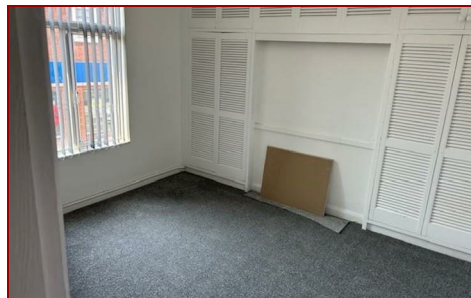
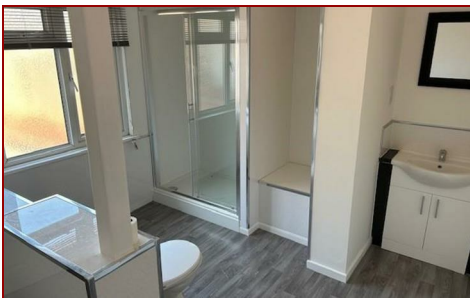


£795 PCM

Jayman  
www.jayman.co.uk

Lettings & Property Management



High Street, Telford, Shropshire TF4 2EX

£795 PCM

- First floor maisonette
- Redecorated throughout
- Spacious lounge
- Close to local amenities
- Available now!
- Two bedrooms
- New carpets and flooring
- Modern kitchen
- Council Tax A



## Entrance hallway

Through the front door there is a landing and then you go up the stairs to the first floor.

## WC

With WC and hand basin.

## Living room

Spacious living room

## Kitchen

Good sized kitchen with electric cooker and hob. Space for washing machine and fridge/freezer.

## Bedroom One

Double bedroom

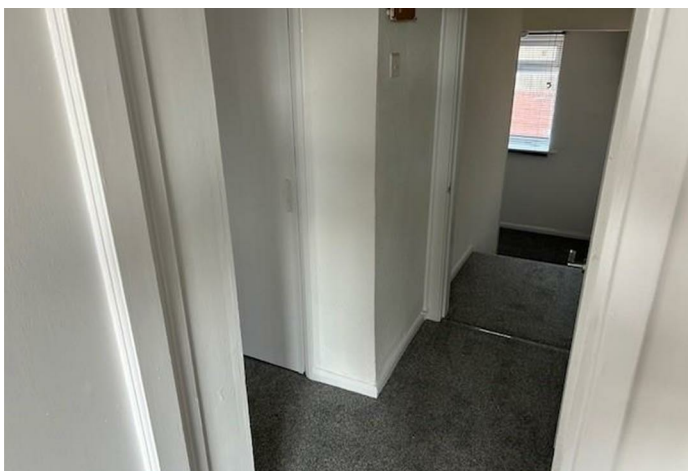
## Bedroom Two

Double bedroom

## Shower Room

With shower cubicle, hand basin

**REQUIRE A MORTGAGE?** Our independent advisor can compare "whole of market" to help find the best mortgage to suit your circumstances. Please call 01543 417 559 for a free mortgage quote including some deals only available through our network. **AGENTS DESCRIPTIONS** These details imply the opinion of the agent at the time these details were prepared and are subjective. It may be that the tenant's opinion may differ. **VIEWING ARRANGEMENTS** By appointment only with Jayman on 01543 417 559 **COUNCIL TAX** Please refer to [www.voa.gov.uk](http://www.voa.gov.uk) for this information. **DESCRIPTIONS AND MEASUREMENTS** All measurements are approximate and some may be maximum on irregular walls. The plan shows the approximate layout of the rooms to show the inter relationship of relationship of one room to another but is not necessarily to scale. **CONSENTS** We have not had sight of any relevant building regulations, guarantees or planning consents and all relevant documentation pertaining to this property should be checked by your legal advisor before exchanging contracts.



Energy Efficiency Rating		Current	Potential
Very energy efficient - lower running costs			
(92 plus) <b>A</b>			
(81-91) <b>B</b>			
(69-80) <b>C</b>			
(55-68) <b>D</b>			
(39-54) <b>E</b>			
(21-38) <b>F</b>			
(1-20) <b>G</b>			
Not energy efficient - higher running costs			

Environmental Impact (CO <sub>2</sub> ) Rating		Current	Potential
Very environmentally friendly - lower CO <sub>2</sub> emissions			
(92 plus) <b>A</b>			
(81-91) <b>B</b>			
(69-80) <b>C</b>			
(55-68) <b>D</b>			
(39-54) <b>E</b>			
(21-38) <b>F</b>			
(1-20) <b>G</b>			
Not environmentally friendly - higher CO <sub>2</sub> emissions			