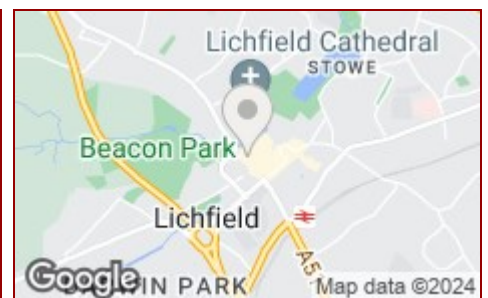


£725 PCM

Jayman
www.jayman.co.uk

Lettings & Property Management



Bird Street, Lichfield, Staffordshire WS13 6PR

£725 PCM

- ONE BEDROOM APARTMENT
- CITY CENTRE LOCATION
- ALLOCATED PARKING
- COUNCIL TAX B
- LARGE KITCHEN / DINER
- ORIGINAL CHARACTER FEATURES
- EPC C



Kitchen/diner 14'9" x 14'5"

Spacious kitchen/diner with window to fore.
With a range of storage cupboards, cooker and extractor fan.

Lounge 16'4" x 16'0"

Large lounge with character ceiling beams.
Electric heating and window to fore.

Storage Cupboard

Bedroom 15'8" x 9'10"

Good size master bedroom with walk in wardrobe.

Character ceiling beams.

Electric heating,

Bathroom 7'6" x 3'11"

Suite comprising of w/c, hand basin and large shower.

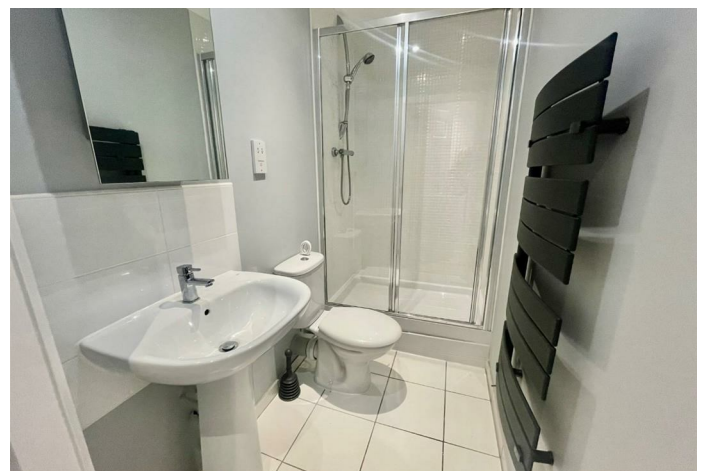
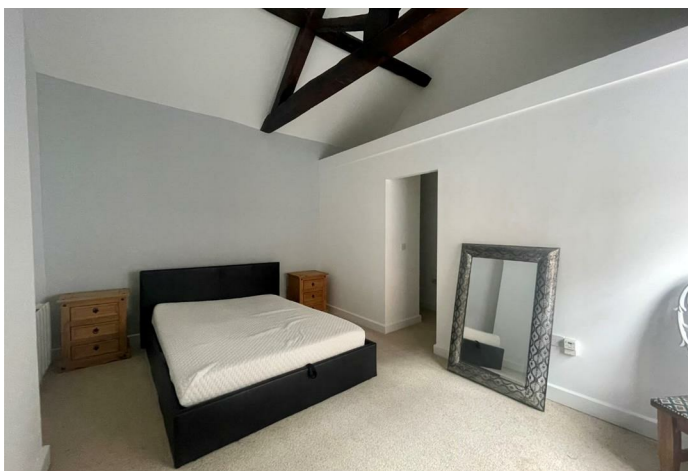
Parking

One parking space

Location

Be advised this is located above Le Reve Cocktail bar on Bird Street in the centre of Lichfield.

REQUIRE A MORTGAGE? Our independent advisor can compare "whole of market" to help find the best mortgage to suit your circumstances. Please call 01543 417 559 for a free mortgage quote including some deals only available through our network. **AGENTS DESCRIPTIONS** These details imply the opinion of the agent at the time these details were prepared and are subjective. It may be that the tenant's opinion may differ. **VIEWING ARRANGEMENTS** By appointment only with Jayman on 01543 417 559 **COUNCIL TAX** Please refer to www.voa.gov.uk for this information. **DESCRIPTIONS AND MEASUREMENTS** All measurements are approximate and some may be maximum on irregular walls. The plan shows the approximate layout of the rooms to show the inter relationship of relationship of one room to another but is not necessarily to scale. **CONSENTS** We have not had sight of any relevant building regulations, guarantees or planning consents and all relevant documentation pertaining to this property should be checked by your legal advisor before exchanging contracts.



Energy Efficiency Rating		Current	Potential
Very energy efficient - lower running costs			
(92 plus) A			
(81-91) B			
(69-80) C			
(55-68) D			
(39-54) E			
(21-38) F			
(1-20) G			
Not energy efficient - higher running costs			

Environmental Impact (CO ₂) Rating		Current	Potential
Very environmentally friendly - lower CO ₂ emissions			
(92 plus) A			
(81-91) B			
(69-80) C			
(55-68) D			
(39-54) E			
(21-38) F			
(1-20) G			
Not environmentally friendly - higher CO ₂ emissions			