



83 Lyndhurst Grove

, London, SE15 5AW

£3,000 Per month



2



2

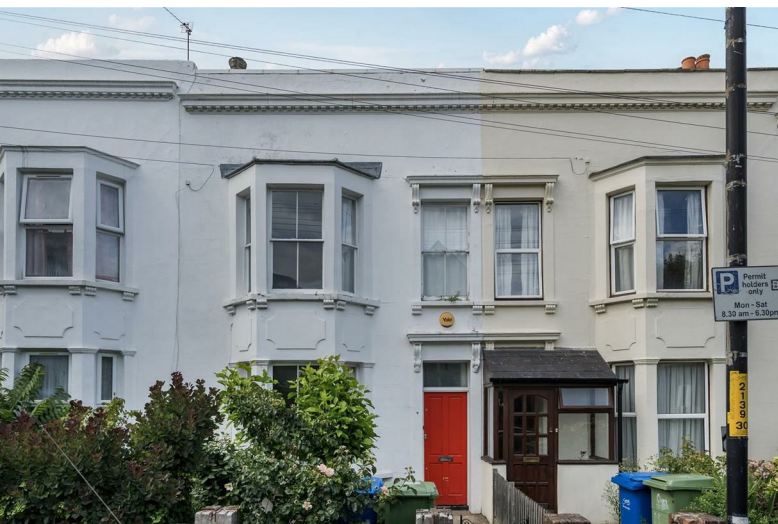


2



E

83 Lyndhurst Grove



Description

This handsome two bedroom, two reception room Victorian house has an abundance of charm and character with high ceilings, intricate swan neck coving, beautiful high skirting boards and elegant fireplaces.

Original wood flooring runs throughout the property, stunning sash windows flood the two front sitting rooms with natural light. The sociable 27' ft open plan kitchen/dining area to the rear of the property has a fridge freezer, cooker, hob, ample storage and pretty views over the private garden.

Upstairs accommodation consists of an magnificent bathroom, including a freestanding roll top bath and separate shower room next door, a generous master bedroom with wonderful fronted windows which floods the ample storage.

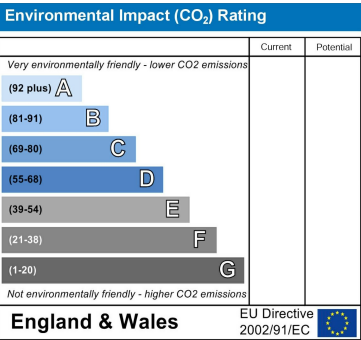
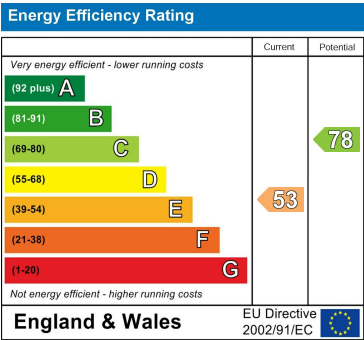
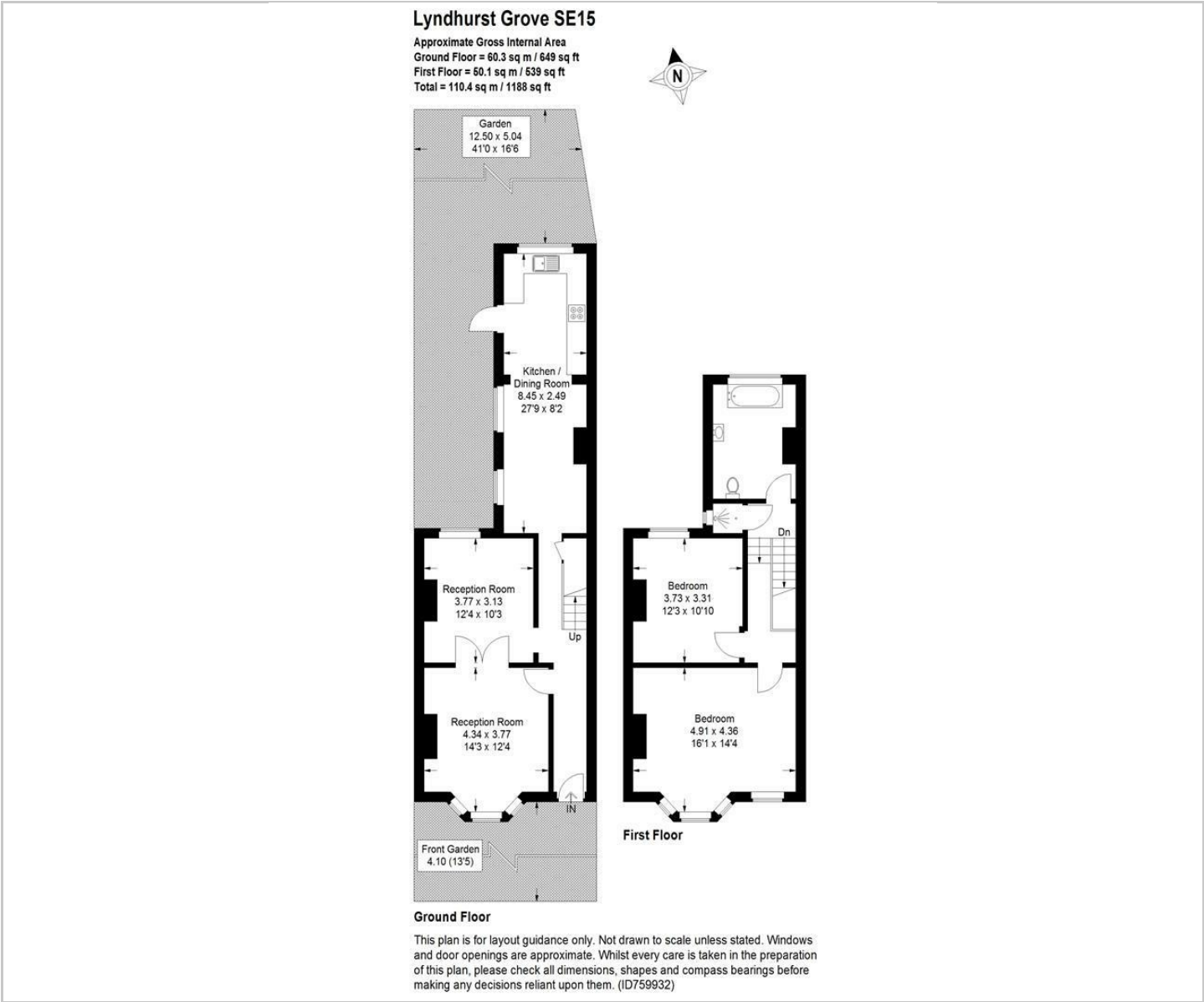
The garden is perfect for summer time entertaining with patio area, lawn, mature shrubs and flower beds.

- Exquisite two bedroom Victorian property
- Short walk to Peckham Rye Overground Station (Zone 2)
- Sumptuous rooms with high ceilings
- Excellent location for school catchments
- Original features throughout
- Generous kitchen/diner space
- Bathroom and separate shower room
- Superb transport links and local amenities
- Private garden
- Available mid to end August 2025 on an unfurnished basis





Floor Plan



Viewing

Please contact our Head Office Office on 03333444385 if you wish to arrange a viewing appointment for this property or require further information.

These particulars, whilst believed to be accurate are set out as a general outline only for guidance and do not constitute any part of an offer or contract. Intending purchasers should not rely on them as statements of representation of fact, but must satisfy themselves by inspection or otherwise as to their accuracy. No person in this firms employment has the authority to make or give any representation or warranty in respect of the property.

