



15 Gibbs Close

, High Wycombe, HP13 5YB

£1,450 Per month



15 Gibbs Close



Description

This delightful two bedroom house offers a perfect blend of comfort and convenience. A generous size, the property boasts a well-designed layout that is ideal for both families and professionals alike and is presented to the market in excellent condition throughout.

Upon entering, you are welcomed into a spacious hallway (with storage) with stairs up to the substantial and bright reception space which provides access to the fully integrated kitchen and garden.

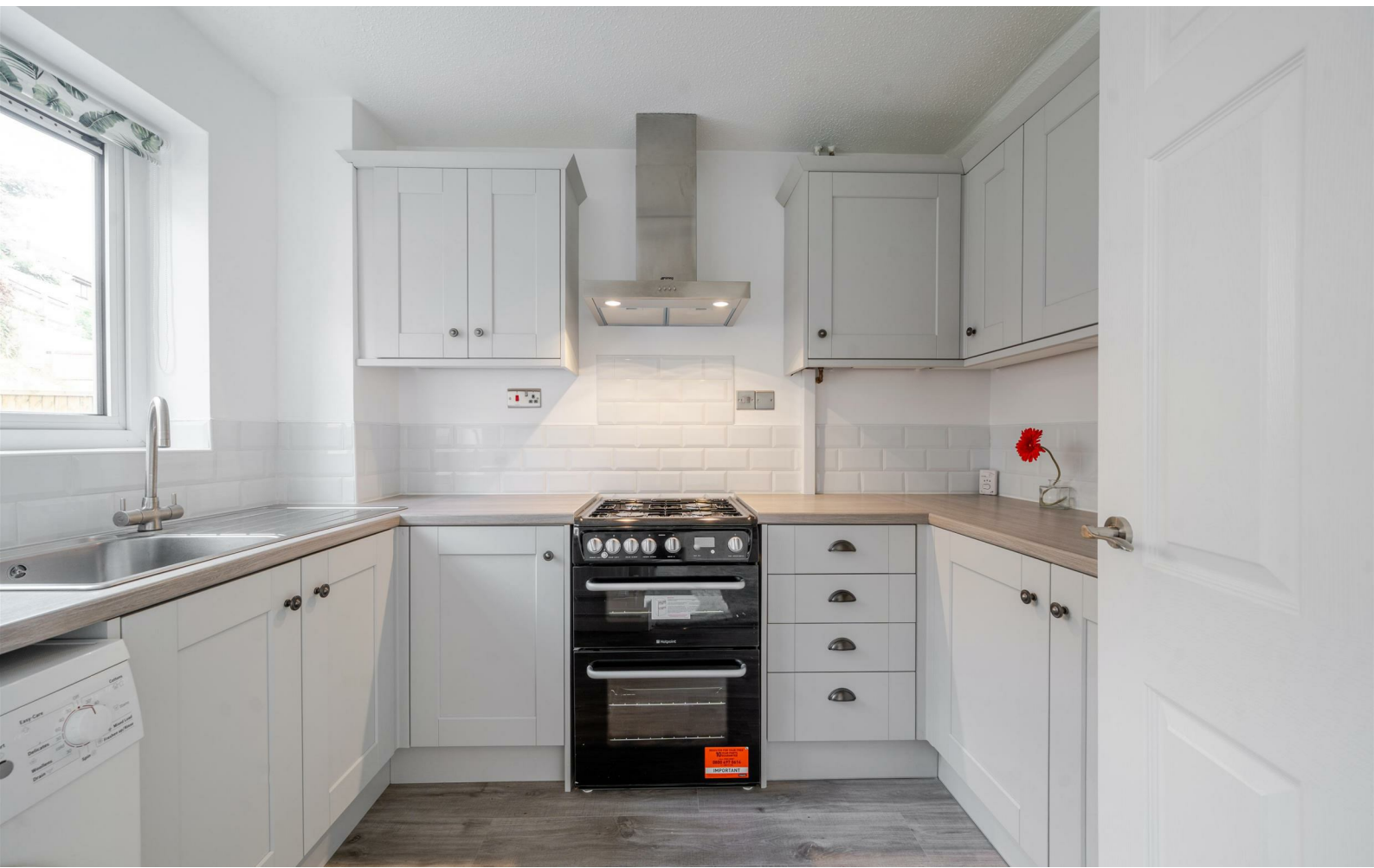
The two double bedrooms and integrated bathroom are housed on the first floor and in keeping with the entire property, are in excellent condition.

The bathroom is thoughtfully designed, catering to the needs of modern living, containing a bath with integrated shower.

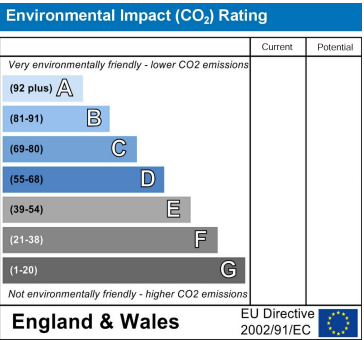
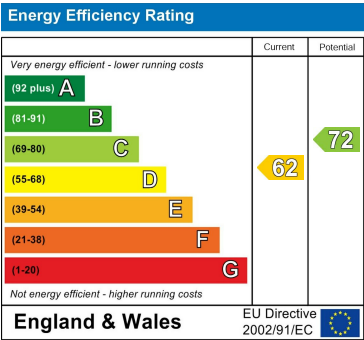
This property benefits from both an integral garage and off street parking.

- Two double bedrooms
- Generous sized reception space
- Private garden
- Driveway
- Available immediately
- Recently decorated
- Bathroom including integrated shower
- Integral Garage
- Great Transport links
- Unfurnished





Floor Plan



Viewing

Please contact our Head Office Office on 03333444385 if you wish to arrange a viewing appointment for this property or require further information.

These particulars, whilst believed to be accurate are set out as a general outline only for guidance and do not constitute any part of an offer or contract. Intending purchasers should not rely on them as statements of representation of fact, but must satisfy themselves by inspection or otherwise as to their accuracy. No person in this firms employment has the authority to make or give any representation or warranty in respect of the property.

