



Flat 600A Thornton House

Townsend Street, London, SE17 1HY

£4,300 Per month



5



2



2



3

Flat 600A Thornton House



Description

This impressive residence boasts an abundance of space, featuring five generously sized double bedrooms, perfect for families or those seeking extra room for guests or a home office.

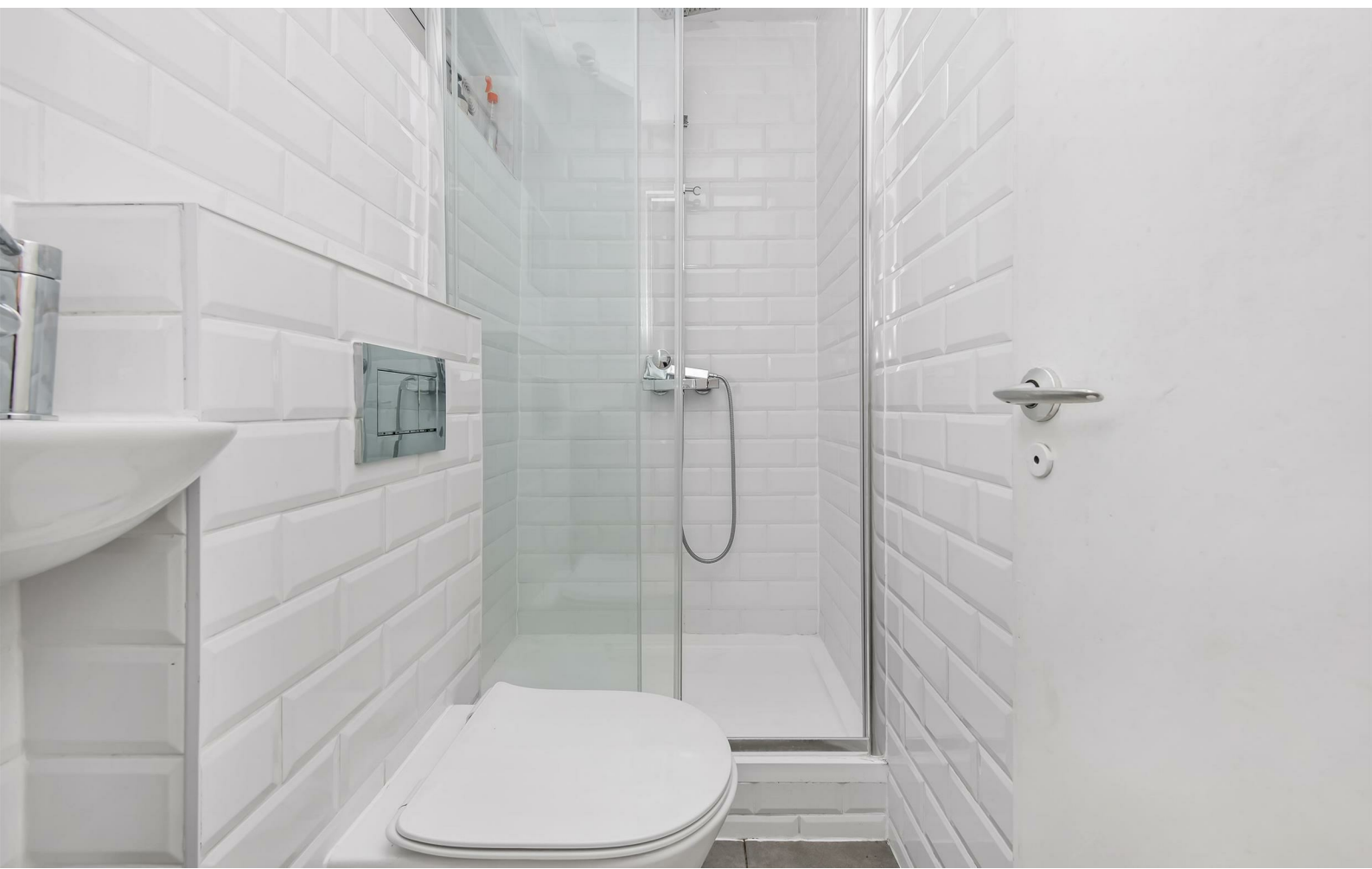
The apartment is designed with comfort and functionality in mind, offering two inviting reception rooms that provide ample space for relaxation and entertaining. The layout is both practical and stylish, ensuring that every corner of the home is utilised to its fullest potential.

With three modern shower rooms, morning routines will be a breeze, accommodating the needs of a busy household with ease. The property also benefits from a delightful garden, a rare find in London, where you can enjoy fresh air and outdoor space, ideal for summer gatherings or quiet moments of reflection.

With its prime location, you will have easy access to local amenities, transport links, and the vibrant culture that London has to offer. This apartment is a true gem, ready to welcome you into a life of convenience and elegance. Don't miss the opportunity to make this exceptional property your new home.

- Five bedrooms
- Close to Elephant and Castle
- Two reception areas
- Flexible furnishings
- Three separate shower rooms
- Excellent transport links
- Generously sized patio garden
- Available immediately

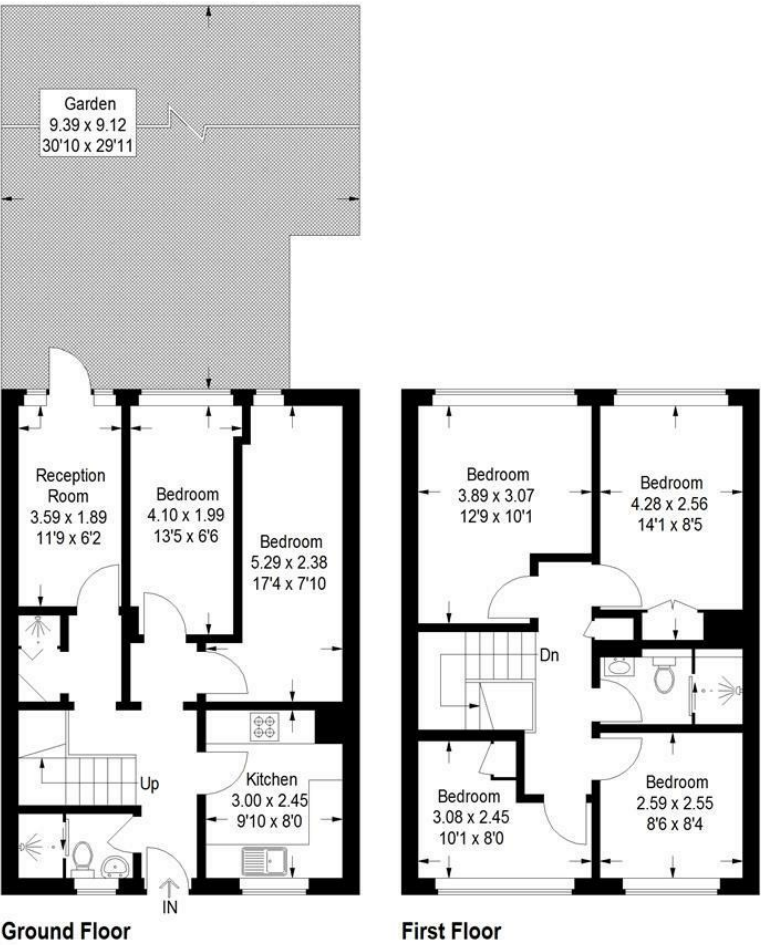




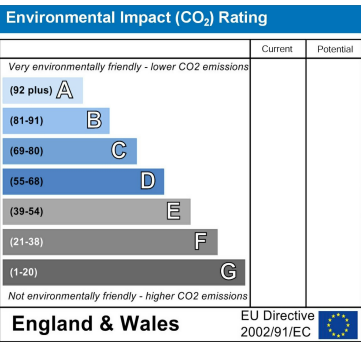
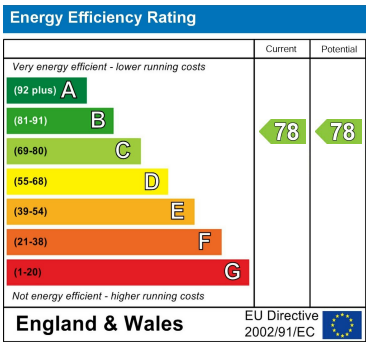
Floor Plan

Townsend Street SE17

Approximate Gross Internal Area
Ground Floor = 49.4 sq m / 532 sq ft
First Floor = 49.0 sq m / 527 sq ft
Total = 98.4 sq m / 1059 sq ft



This plan is for layout guidance only. Not drawn to scale unless stated. Windows and door openings are approximate. Whilst every care is taken in the preparation of this plan, please check all dimensions, shapes and compass bearings before making any decisions reliant upon them. (ID795807)



Viewing

Please contact our Head Office Office on 03333444385 if you wish to arrange a viewing appointment for this property or require further information.

These particulars, whilst believed to be accurate are set out as a general outline only for guidance and do not constitute any part of an offer or contract. Intending purchasers should not rely on them as statements of representation of fact, but must satisfy themselves by inspection or otherwise as to their accuracy. No person in this firms employment has the authority to make or give any representation or warranty in respect of the property.

