



The Cottingham 4 bedroom home

Homes 175 & 197

Cavendish View

Thurston IP31 3QH | 01359 758632

lindenhomes.co.uk

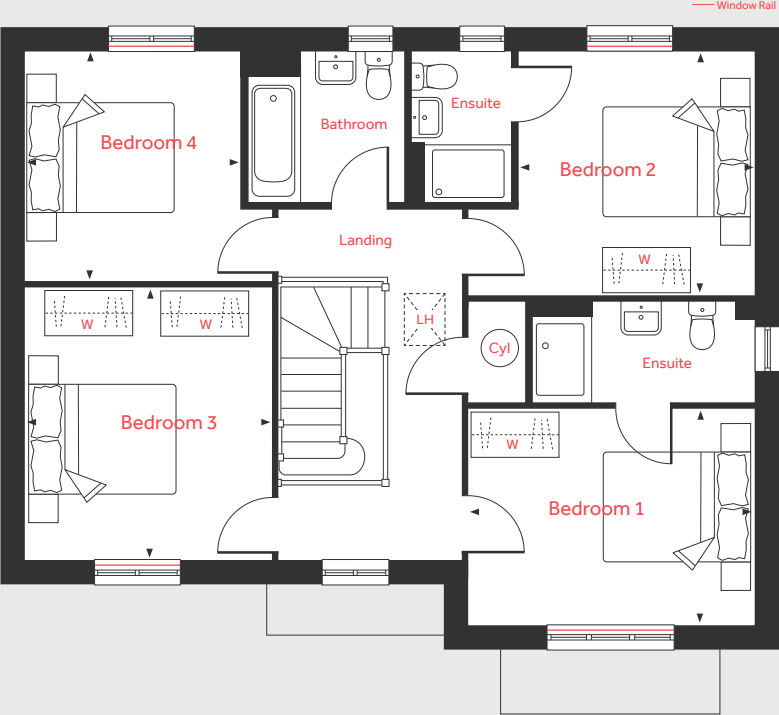
Linden
HOMES

The Cottingham

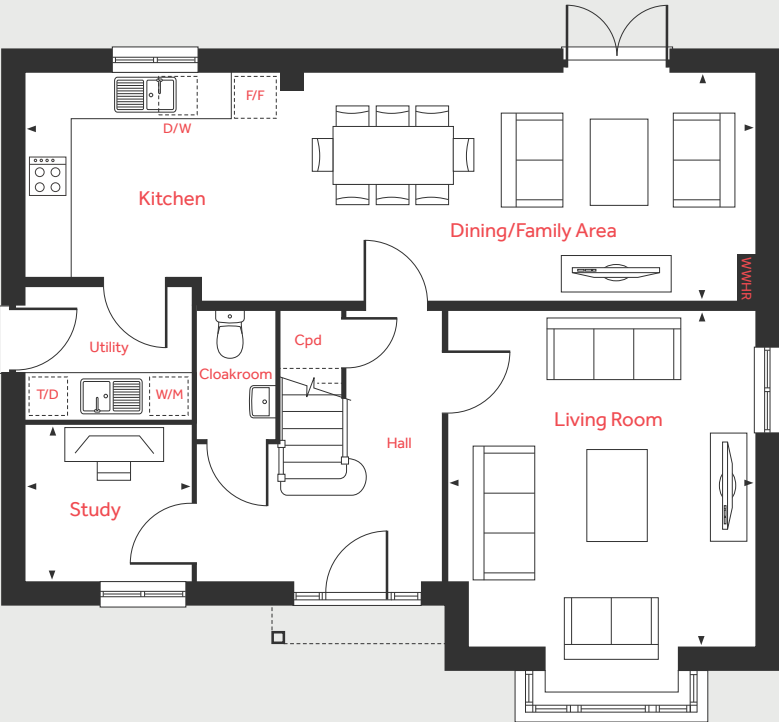
4 bedroom home

Homes 175 & 197

First Floor



Ground Floor



Ground Floor

Living Room	4.60m x 4.20m	15'1" x 13'9"
Kitchen/Dining/Family Area	9.97m x 3.09m	32'8" x 10'1"
Study	2.24m x 2.10m	7'4" x 6'11"

First Floor

Bedroom 1	3.90m x 2.95m	12'9" x 9'8"
Bedroom 2	3.31m x 3.22m	10'11" x 10'7"
Bedroom 3	3.73m x 3.39m	12'2" x 11'1"
Bedroom 4	3.13m x 2.93m	10'3" x 9'7"

W/M	Space for washing machine	LH	Loft hatch
F/F	Space for fridge freezer	Cpd	Cupboard
D/W	Space for dishwasher	W	Space for wardrobe
T/D	Space for tumble dryer	Cyl	Hot water cylinder
WWHR	Waste water heat recovery	◀ ▶	Measuring points

The illustrations shown are computer generated impressions of how the property may look and are indicative only. External details or finishes may vary on individual plots and homes may be built in either detached or attached styles depending on the development layout. Exact specifications, window styles and whether a property is left or right-handed may differ from plot to plot. Please speak to our sales consultant for specific plot details. The floorplan has been produced for illustrative purposes only. Room sizes shown are between arrow points as indicated on plan. The dimensions have tolerances of + or - 50mm and should not be used other than for general guidance. If specific dimensions are required, enquiries should be made to the sales consultant. The floor plans shown are not to scale. Measurements are based on the original drawings. Slight variations may occur during construction. December 2024.

Linden

HOMES