

**2 Gurkha Road, Blandford Forum, Dorset, DT11 7FL**











## Gurkha Road, Blandford Forum, DT11

This Two Bedroom Detached Coach House is set in a highly popular residential area and comes to the market with no onward chain. Currently tenanted, the property is in very good order throughout and provides comfortable living with two good sized bedrooms, off road parking and a garage with separate store. With an enviable EPC of 'C', and close to all associated amenities, the property will suit a couple, small family and investors alike.

 1  2  1  2

- NO ONWARD CHAIN
- Two Bedroom Detached Coach-House
- Off-Road Parking for Two Cars
- Popular Residential Location
- Close to all Amenities and Schools
- Garage and Store
- Well Presented Throughout
- Underfloor Heating to Bathroom

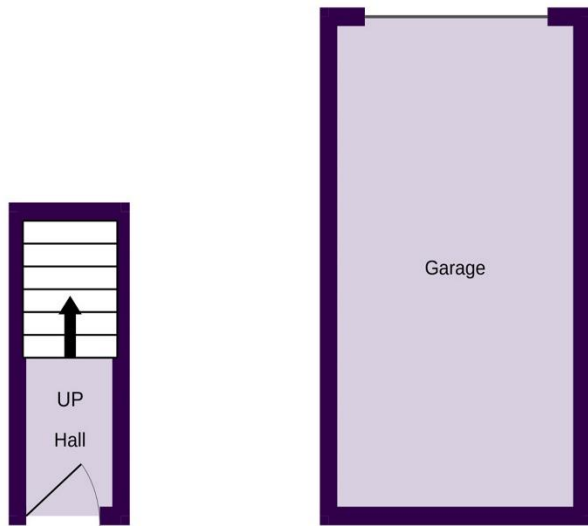


**Susie Palin**

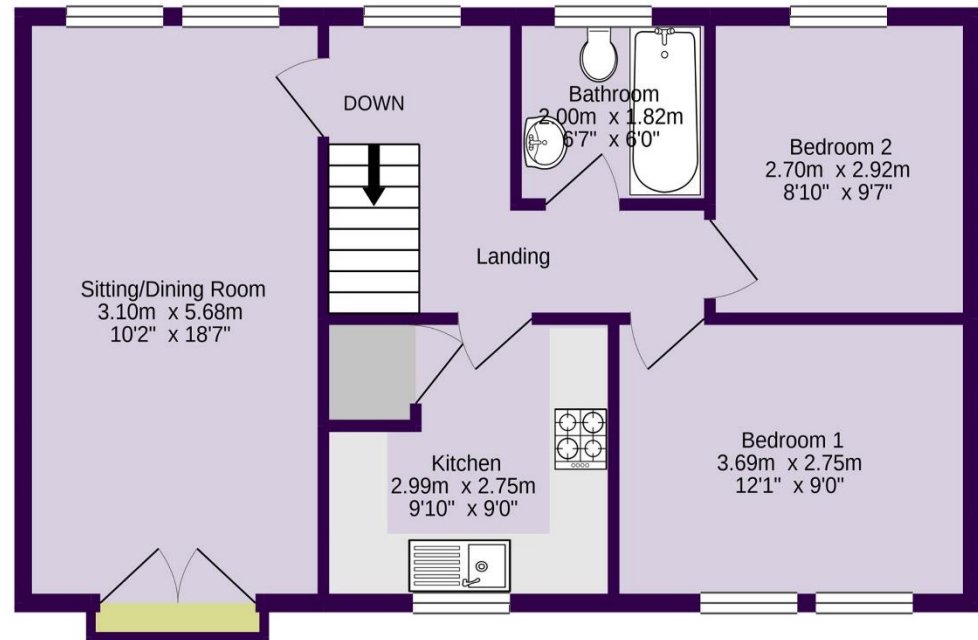
07570 357 553

[susie.p@meyersstates.com](mailto:susie.p@meyersstates.com)





GROUND FLOOR



FIRST FLOOR

PARKING: 

GHURKA ROAD,  
BLANDFORD



**MEYERS**  
MOVING BEYOND EXPECTATIONS

APPROXIMATE AREAS

GROUND FLOOR AREA	170 SQ/FT
FIRST FLOOR AREA	598 SQ/FT
TOTAL FLOOR AREA	768 SQ/FT

COUNCIL TAX

EPC RATING

APPROXIMATE UTILITY COSTS

Copyright: Meyers Estates 2019

DISCLAIMER: This information has been prepared as a guide only. The Vendor and Estate Agent make no warranties as to its accuracy and all interested parties must rely on their own enquiries.