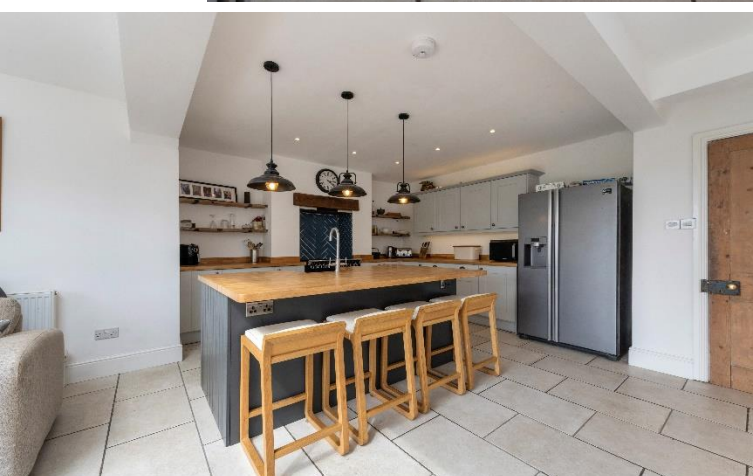



The Cliff, Bryanston, Blandford Forum, Dorset, DT11







A superb example of a late Victorian semi-detached former Estate Workers Cottage that has been thoughtfully extended and improved by the current owners. Now offering over 1600 sq ft of accommodation, the property is set in an idyllic spot within the Village of Bryanston, less than a mile away from the historic Georgian Market Town of Blandford Forum. This truly wonderful home enjoys countryside views in abundance to the rear and the recent extension has been expertly designed and skillfully executed. With an enviable EPC rating of 'C', character features including a log burner to the living room, vaulted ceiling to the ground floor bedroom, nearly 34 foot long kitchen/diner/family room, this extraordinary property is a must-see to be fully appreciated. Council Tax Band D.

 2  4  2  2+

- Improved and Extended Late Victorian Semi-Detached Country Cottage
- EPC 'C'
- 4 Double Bedrooms, One with Ensuite to the Ground Floor
- Magnificent Open Plan Kitchen/Dining/Family Room
- Separate Utility Room
- Outstanding Views to The Rear Over Adjacent Farmland
- Close to Open Countryside Walks and Village Club
- Over 1600 sq ft of Family Living Accommodation



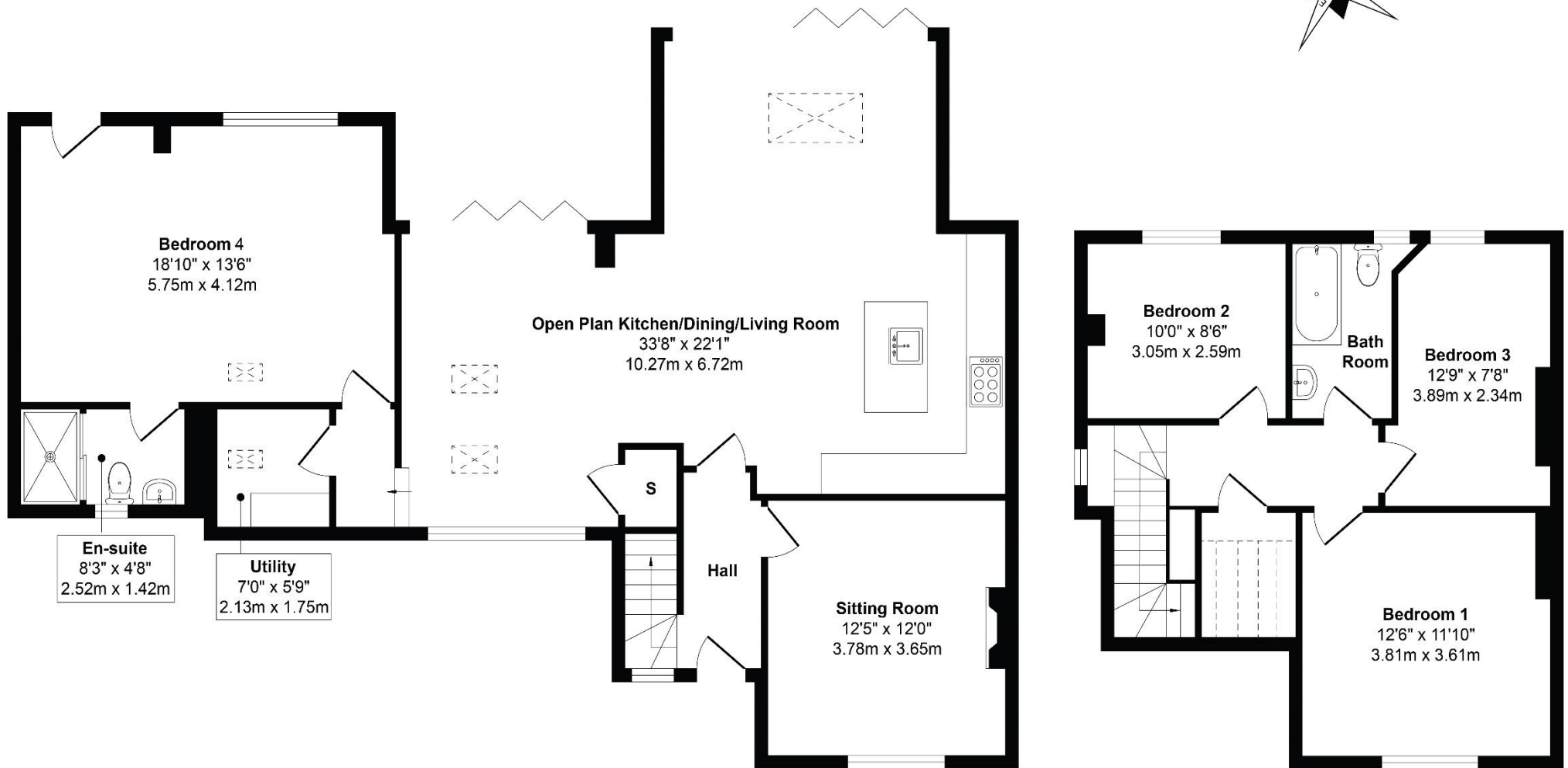
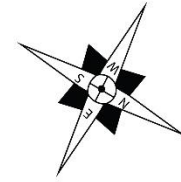
Susie Palin

07570 357 553

susie.p@meyersstates.com



The Cliff, Bryanston, Blandford, Dorset, DT11



Ground Floor
Approximate Floor Area
1105 sq. ft
(102.65 sq. m)



MEYERS
MEYERSESTATES.COM

First Floor
Approximate Floor Area
511 sq. ft
(47.45 sq. m)

Approximate Gross Internal Floor Area 1,616 sq. ft / 150.10 sq. m