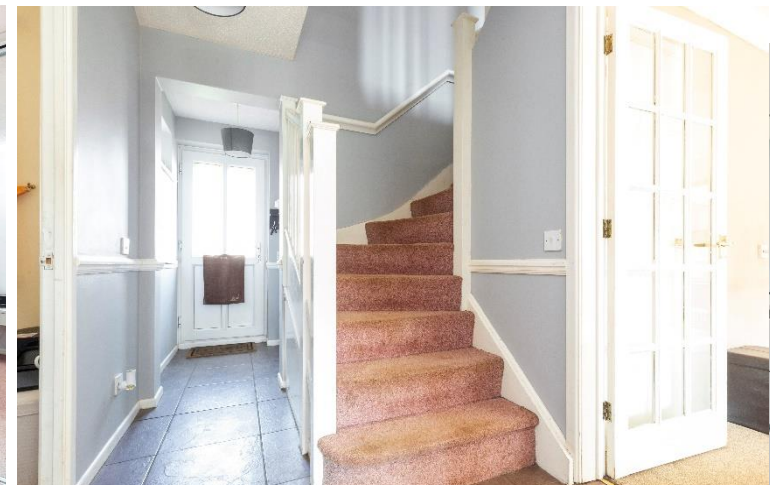


11 Nether Mead, Okeford Fitzpaine, Dorset, DT11 0TP







11 Nether Mead, Okeford Fitzpaine

A warm and welcoming 4 bedroom detached family home nestled in a quiet corner plot within an even quieter cul-de-sac on the edge of the popular Village of Okeford Fitzpaine. The lovely private gardens include a water feature and secluded decked area for Alfresco Dining behind mature hedgerows. With off-road parking for 4 cars, a single garage, utility room, dining room and separate study, this home would suit couples and families alike. It is within a very easy walk of all the local amenities in the Village and open countryside walks. EPC 'C'.

 3  4  2  4

- Detached Family Home
- Four Double Bedrooms
- Single Garage and Off-Road Parking for 4 Cars
- Corner Plot in Quiet Cul-de-Sac
- Edge of Village Location yet close to amenities
- Close to Open Countryside Walks
- Study to Ground Floor
- Downstairs Cloakroom



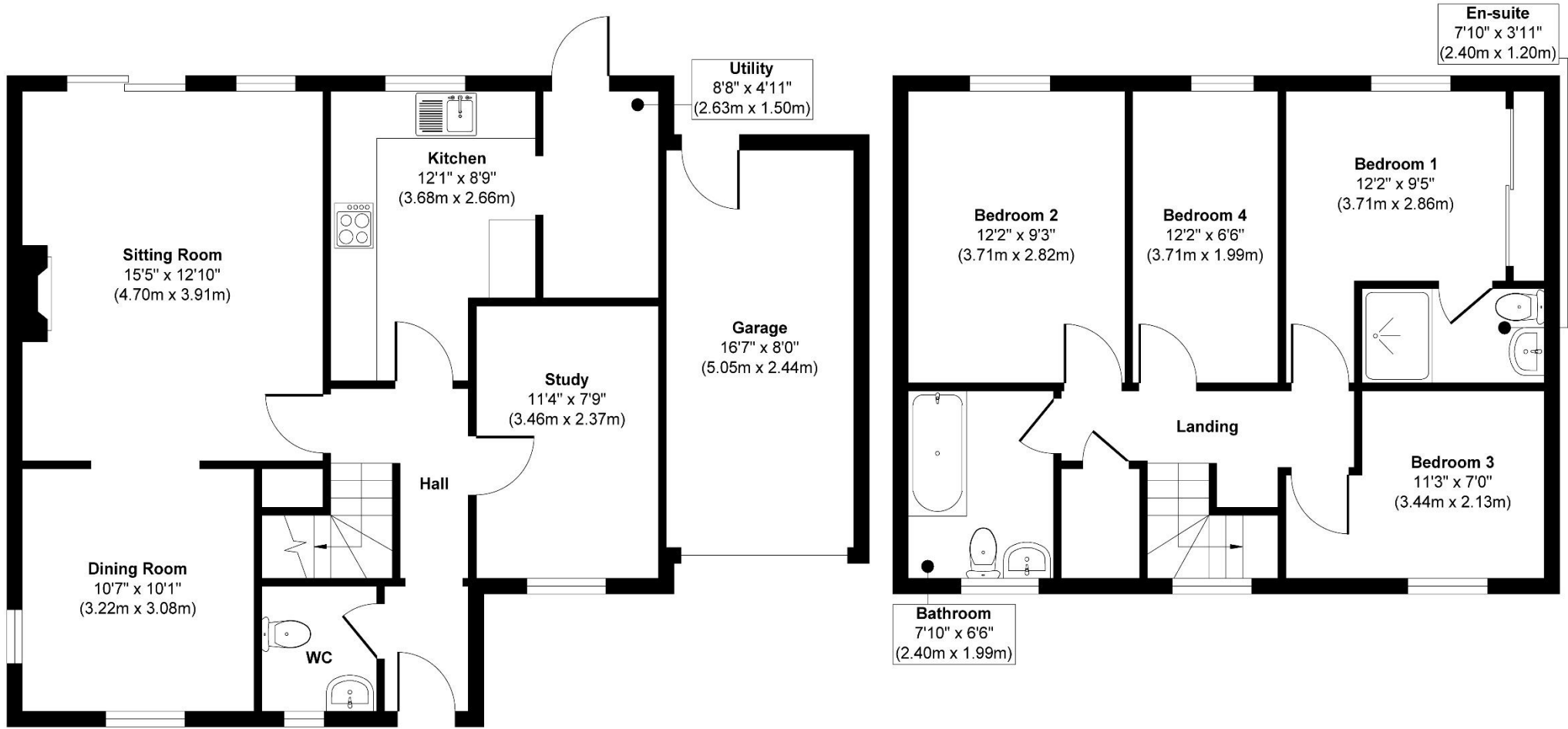
Susie Palin

07570 357 553

susie.p@meyersstates.com



Nether Mead, DT11



Ground Floor
 Approximate Floor Area
 775 sq. ft
 (71.99 sq. m)

First Floor
 Approximate Floor Area
 550 sq. ft
 (51.09 sq. m)



Approx. Gross Internal Floor Area 1325 sq. ft / 123.08 sq. m

Copyright Meyers Estates 2024. This information has been prepared as a guide only. The vendor and estate agents make no warranties as to its accuracy and all interested parties must rely on their own enquiries.

Produced by Elements Property