

The Paddocks, Iwerne Minster, Dorset, DT11







8 The Paddocks, Iwerne Minster

A warm and welcoming detached family home situated within the ever popular Village of Iwerne Minster. Within a very easy walk of the Village Pub, Post Office and Stores, this substantial property comes to the market for the first time in 25 years and offers good overall proportions throughout. The property offers scope to update to your own taste whilst offering ample family accommodation. It is a must see to fully appreciate its super location, position within the Village and easy commuting links to both Shaftesbury and Blandford Forum.



Susie Palin

07570 357 553

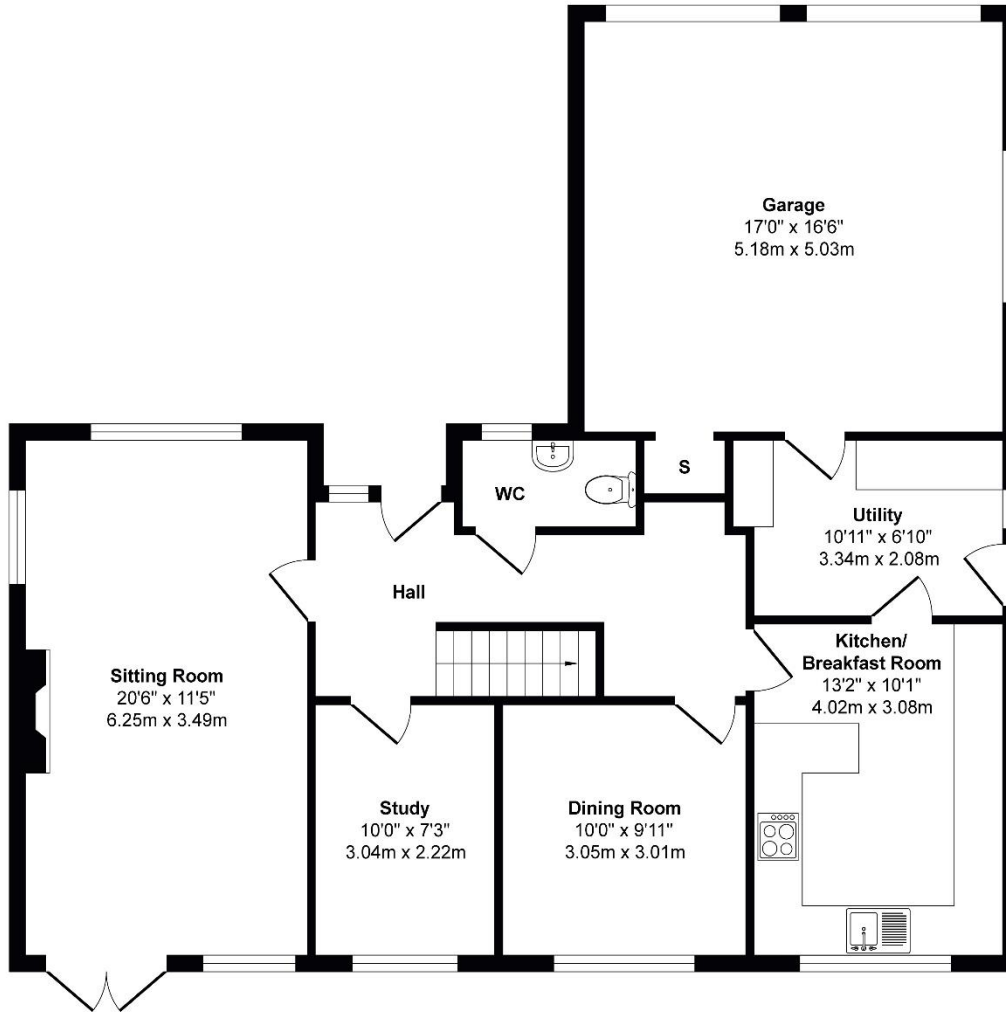
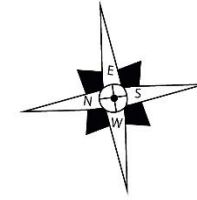
susie.p@meyersstates.com

 2-3  4  1  2+

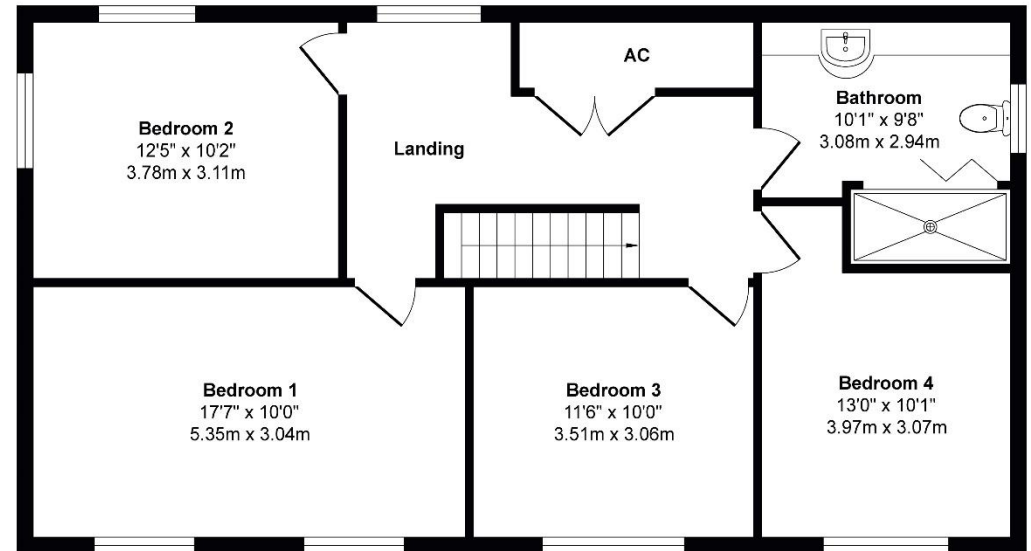
- Superb Edge of Village Location
- Close to Open Countryside Walks and Village Amenities
- 4 Good Sized Bedrooms
- Double Garage and Driveway Parking
- Separate Dining Room
- Large Sitting Room
- Study/Third Reception Room
- Quiet Cul-De-Sac Location



The Paddocks, Iwerne Minster, Dorset, DT11



Ground Floor
Approximate Floor Area
1,082 sq. ft
(100.49 sq. m)



First Floor
Approximate Floor Area
814 sq. ft
(75.62 sq. m)



MEYERS
MEYERSESTATES.COM

Approximate Gross Internal Floor Area 1896 sq. ft / 176.11 sq. m

Copyright Meyers Estates 2024. This information has been prepared as a guide only. The vendor and estate agents make no warranties as to its accuracy and all interested parties must rely on their own enquiries.