

# Lanterns, Blandford St Mary, Dorset, DT11







This unique Detached Family Home is set on the outskirts of the Georgian Market Town of Blandford Forum and sits within its own private grounds of circa 1/3 acre. Full of character and charm both inside and out, this substantial property offers 2500 sq ft of accommodation yet is warm, welcoming with a lovely feel throughout. Backing onto open countryside, the views are spectacular only adding to the sense of space this property affords. Within commuting distance of the larger Towns of Bournemouth and Poole and the beaches of the Jurassic Coast, the location is enviable and the property very well presented. An absolute must-see for those seeking a large family home in a convenient location.

 5  5  3  5+

- Unique 5 Bedroom Detached Family Home
- Outstanding Views over Open Countryside
- Country Style Kitchen/Diner
- Master Suite with Dressing Area, Private Balcony and Large Ensuite
- 5 Reception Rooms
- Full of Charm and Character Features
- Well Presented Throughout
- Extensive Off-Road Parking and Double Garage



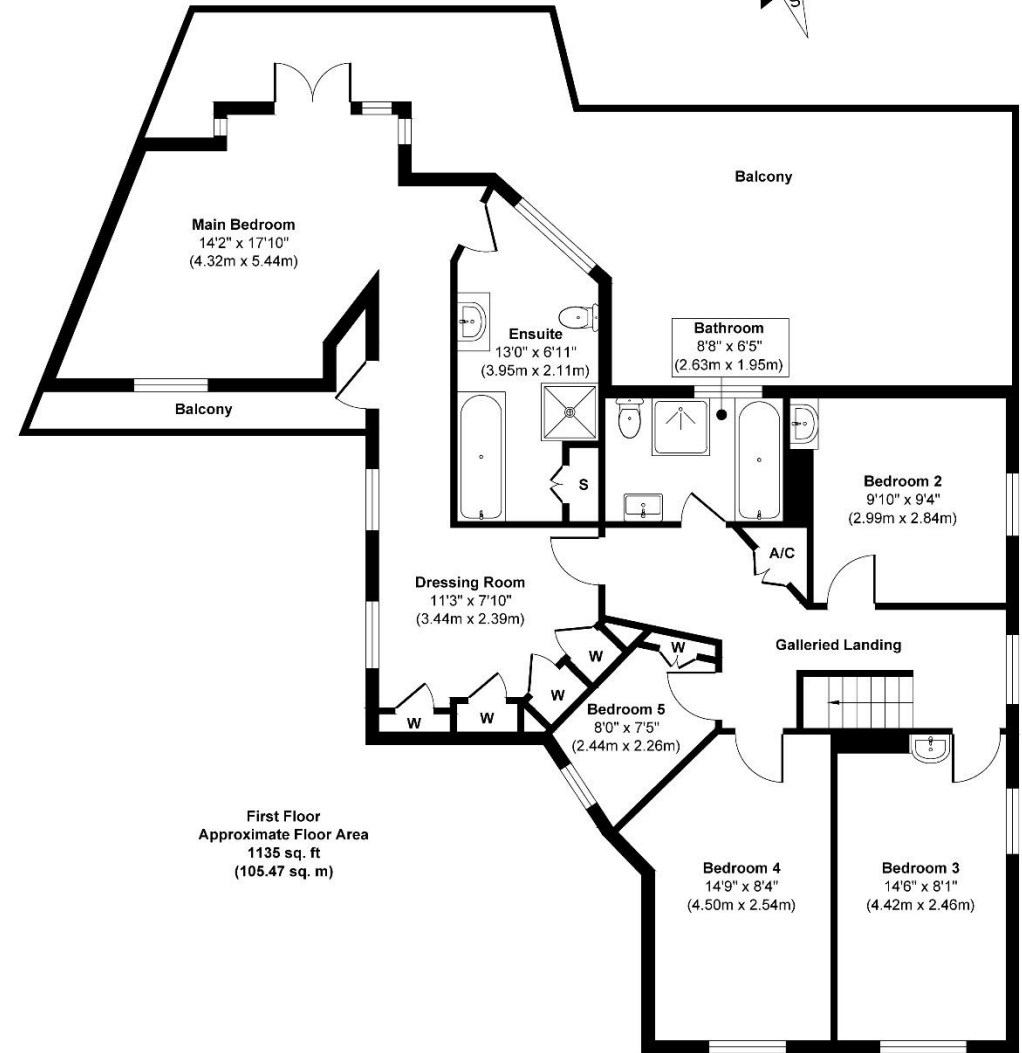
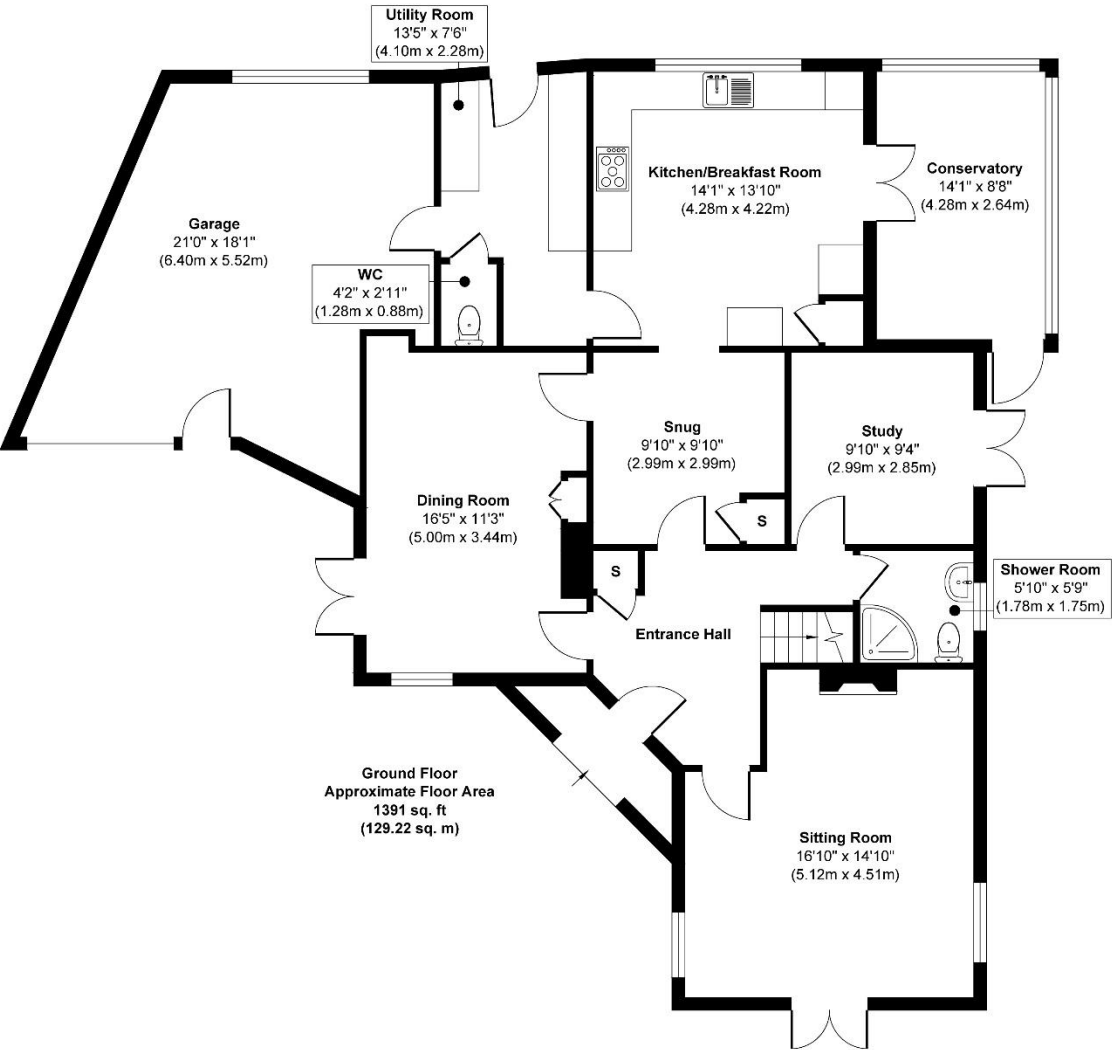
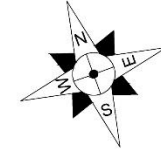
**Susie Palin**

07570 357 553

[susie.p@meyersstates.com](mailto:susie.p@meyersstates.com)



# Bournemouth Road, Blandford St Mary, DT11



**Approx. Gross Internal Floor Area 2526 sq. ft / 234.69 sq. m**  
 Copyright Meyers Estates 2023. This information has been prepared as a guide only. The vendor and estate agents make no warranties as to its accuracy and all interested parties must rely on their own enquiries.